

# Upcoming work at Galway Court

We're extending our wastewater network to the Cleveland Development Area, enabling new communities to grow.

Sydney Water's South Region Delivery team, D4C, will deliver this work.

## Overview of our work

We're installing a new underground pipeline to provide wastewater to the 4,500 new homes expected to be built in the Cleveland Development Area.

This pipeline will run from Fairwater Drive to Bong Bong Road and will be installed using Horizontal Directional Drilling (HDD) and trenching.

## Galway Court

For Galway Court, we will be using HDD technology to install the new pipeline. This means the majority of our work will be underground.

However, to install the pipeline using HDD technology, we need to dig two pits – one at the start of the pipeline ('entry pit') and one at the end ('exit pit').

The exit pit for this pipeline will be located in the reserve at Galway Court, Horsley.

## What you need to know

We plan to start work on Galway Court on **27 February** and expect to be complete by **mid May**.

Our work hours are **7 am to 6 pm Monday to Friday**. While we do not plan to work weekends, we are approved to work on Saturdays 8 am - 1 pm. We will write to you again if this occurs.

This work will **not** impact your water or wastewater services.

## What to expect?

### Noise



There will be some noise from our digging and from the drilling machinery on site.

This noise will be limited to our work hours.

### Tree removal



Unfortunately, we do need to trim and remove some vegetation and trees to accommodate the pit and drilling equipment.

Sydney Water's Biodiversity Offset Guideline stipulates a 2:1 replacement policy. For every tree we need to remove as part of our work, 2 will be re-planted in its place.

We will work with Wollongong City Council regarding the location of replacement vegetation.

Please see overleaf for more information.

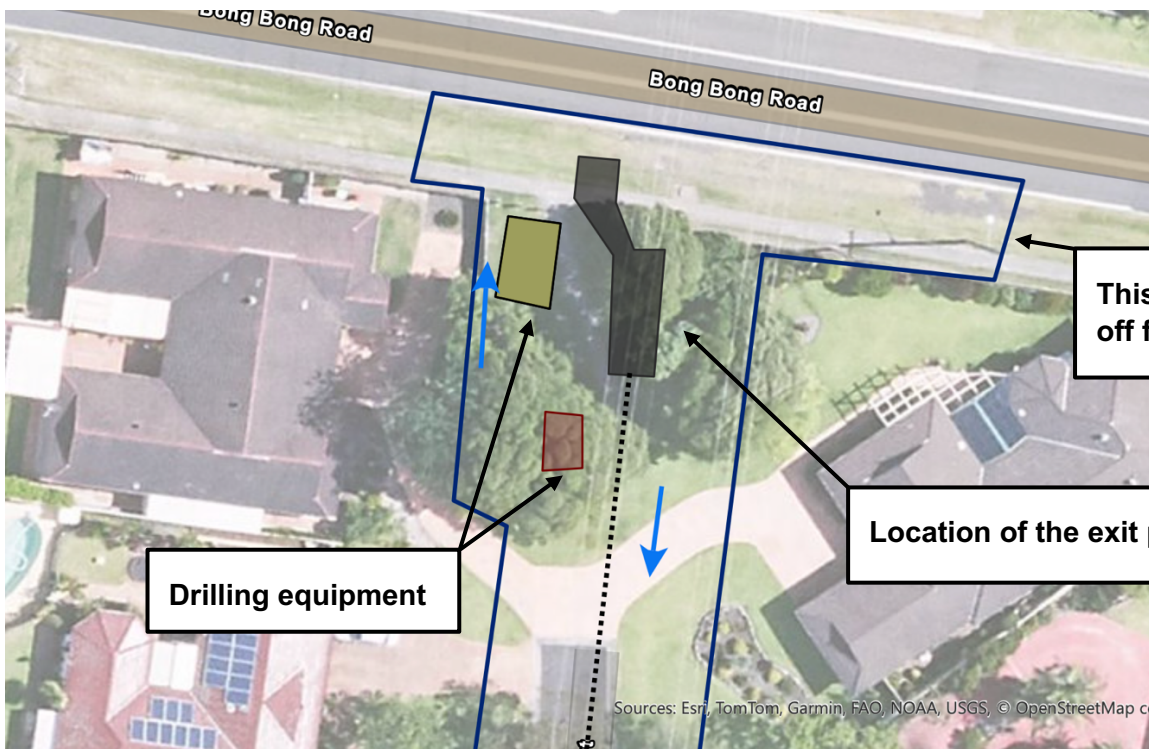
### Traffic and parking



Our work will take up space on the road.

While we will do our best to limit impact to parking in the area, our crews do need their utes and tools to be close to their work area.

Our traffic controllers will help keep the traffic flowing while keeping you safe.

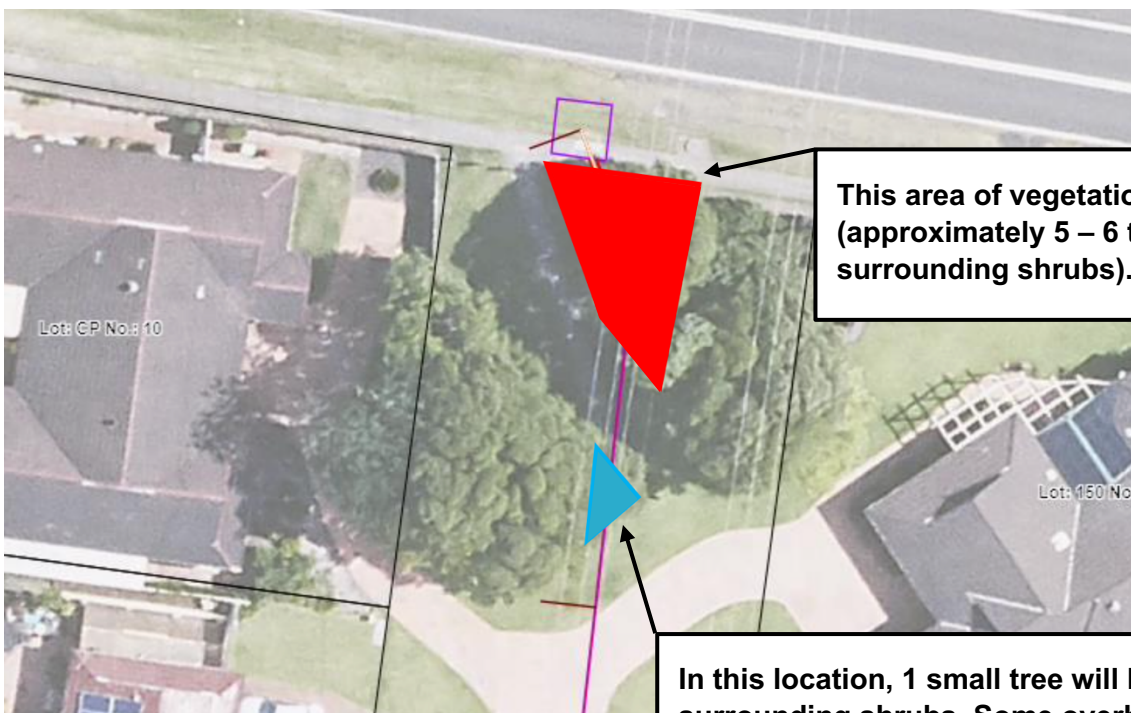


This area will be fenced off for our work.

Location of the exit pit

Drilling equipment

Sources: Esri, TomTom, Garmin, FAO, NOAA, USGS, © OpenStreetMap contributors



This area of vegetation will be removed (approximately 5 – 6 trees and surrounding shrubs).

In this location, 1 small tree will be removed plus surrounding shrubs. Some overhead branches will need to be trimmed.

## Who can I talk to about this project?

For questions or more information, please email [Delivering4Customers@sydneywater.com.au](mailto:Delivering4Customers@sydneywater.com.au) or call us on 1800 006 113 (option 8).

We will continue to keep the community updated as the project progresses.

For updates  
on our  
progress,  
scan here:

