



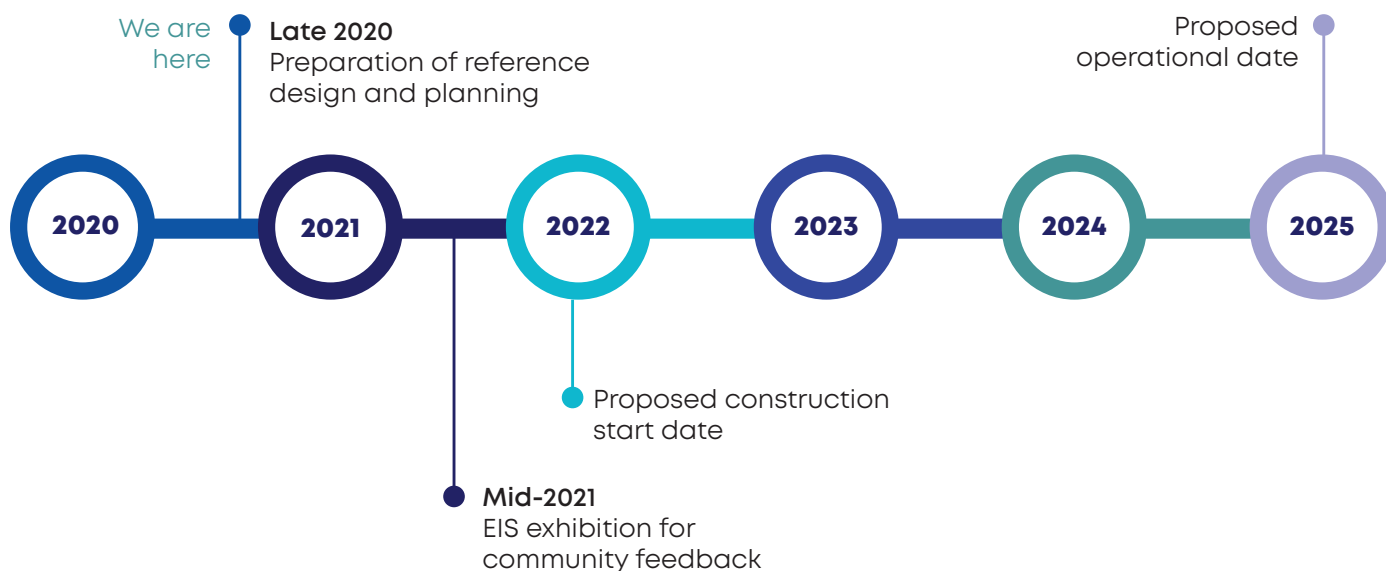
Proposed Advanced Water Recycling Centre



We're planning an Advanced Water Recycling Centre at Kemps Creek, just north of Elizabeth Drive.

The proposed centre will support our Western Sydney community – including the Aerotropolis, where the population is expected to grow from 25,000 today to 650,000 by 2056.

If approved, we expect the first stage to be finished in 2025. When completed in 2036, the plant will treat up to 100 million litres of wastewater daily, producing high quality recycled water that is suitable for a range of uses.



This time line explains where we are in the proposed project life cycle.

Proposed location

The proposed centre will be located north-east of Elizabeth Drive in Kemps Creek, near the start of South Creek.

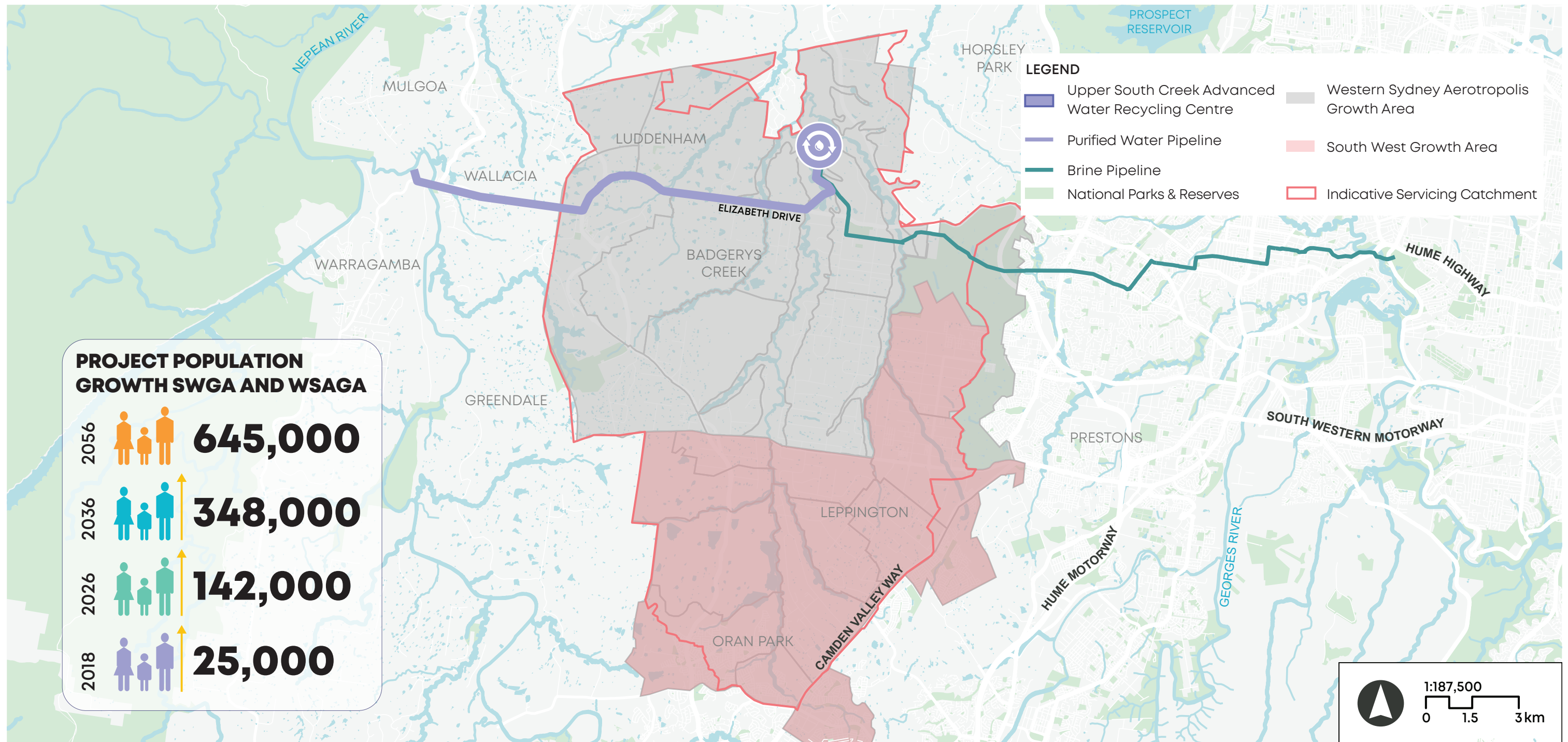
We're starting early engagement with our community to make sure the design reflects and respects the rich Aboriginal and European heritage of the land. The centre will also be integrated with landscaping into the broader surrounding parkland areas.

Next steps

We're in the planning stages for this project, so you might see our teams doing investigations in the area to help us understand the environment.

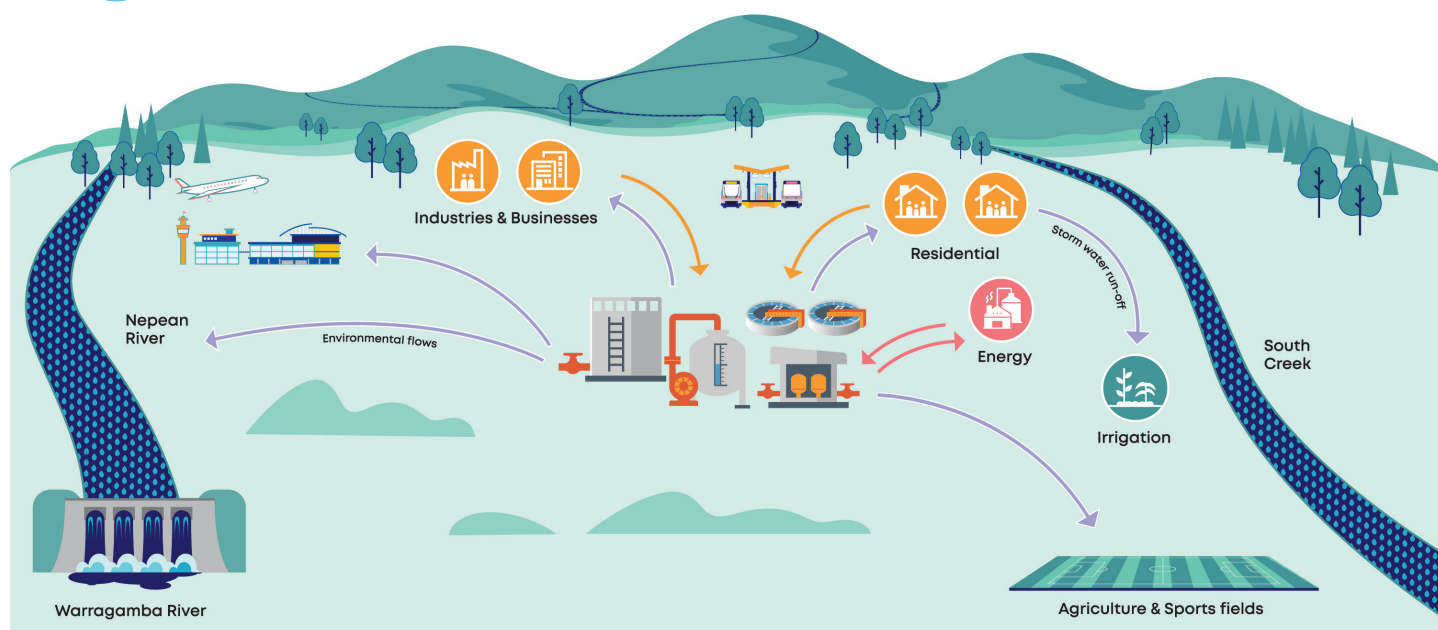
As part of our planning process we need to decide where the supporting network of pipelines will go to connect new homes and developments. You can get involved in this process by providing feedback.

We'll also ask for formal feedback on the proposed design in mid-2021 when we display the project's Environmental Impact Statement.



Proposed project area map

The proposed water recycling centre will provide wastewater services to the South West Growth area and Western Sydney Aerotropolis Growth Area. This map provides indicative ultimate catchment areas for the proposed centre. All information provided here is indicative as at December 2020 and subject to change. Servicing timing will be as per the Growth Servicing Plan, and existing services aren't shown. Once the proposed centre is finished, the associated wastewater network will need to be built before customers can connect to the wastewater system. Sydney Water builds major infrastructure and trunk pipelines. Trunk pipes are large water and wastewater pipelines that customers can't connect directly into. Once the trunk mains have been built, developers or property owners need to build the next stage of pipelines, called reticulation or lead-in pipelines, which are needed to service individual properties. You can learn more about the approval process for developers at sydneywater.com.au/plumbing-building-developing.



Community pop up information sessions

Sydney water will be holding a community pop up information session in your local area. This will be an opportunity for you to meet the project team, receive an update on the project, ask questions and pick up some free goodies.

For further information about the project, join us:

10.00am-1.30pm

Tuesday 19 January 2021
Warragamba Silverdale
Neighbourhood Centre

Wednesday 20 January 2021
Penrith Markets Penrith Showground
141-147 Station Street Penrith

Saturday 30 January 2021
Bonnyrigg Plaza

Sunday 31 January 2021
Penrith Westfields

Saturday 6 February
Carnes Hill Shopping Centre

Sunday 7 February
Luddenham Country Market
Luddenham Showgrounds

Stay up to date with this project



Subscribe to our community newsletter at sydneywatertalk.com.au/upperouthcreek

Contact us

If you have any questions please contact our project team by:



calling 1800 238 881 (during business hours)



emailing upperouthcreek@sydneywater.com.au

We value your views, tell us what you think.

Understanding the current and future water priorities of the community will help us plan for the future water servicing of Western Sydney. You can share your thoughts by visiting <http://bit.ly/UpperSouthCreekSurvey>

Interpreter Service 13 14 50

Arabic • Chinese • Greek • Italian • Korean • Vietnamese

إذا كنت تحتاج إلى مترجم، يرجى الاتصال بالرقم أعلاه.

如果您需要傳譯員的協助，請致電以上的號碼。

Αν χρειάζεστε διερμηνεία, τηλεφωνήστε στον παραπάνω αριθμό.

Se vi serve un interprete, telefonate al numero indicato sopra.

통역사가 필요하시면 위의 번호로 전화하십시오.

Nếu quý vị cần thông dịch viên, hãy gọi đến số trên đây.