

# Badgerys Creek Wastewater Servicing – Stage 2

## COMMUNITY UPDATE – MARCH 2023

Sydney Water is delivering new wastewater infrastructure in the Badgerys Creek catchment to service parts of the Badgerys Creek and Aerotropolis precincts within the Western Sydney Aerotropolis Growth Area (WSAGA).

We are currently designing and planning the wastewater infrastructure that will form part of the long-term servicing solution for the Badgerys Creek catchment.

We are working with the community and other government agencies to deliver this work to ensure services are available and ready in time to meet forecasted growth.

## Project update – Stage 2

Stage 2 of the Badgerys Creek wastewater servicing project involves directing wastewater from the catchment to Sydney Water’s new Upper South Creek Advanced Water Recycling Centre (AWRC) in Kemps Creek.

We are currently preparing the concept design for this new infrastructure which includes two pipelines and a sewage pump station.

Stage 2 assets	Description
<b>Gravity carrier</b>	This pipeline will start at Pitt Street and follow the natural terrain of Badgerys Creek to north of Elizabeth Drive where it will connect with the sewage pump station.
<b>Sewage pump station</b>	This pump station will be located north of Elizabeth Drive next to Badgerys Creek.
<b>Dual pressure main</b>	This pipeline will start at the Badgerys Creek pump station and connect to the Upper South Creek AWRC.

During the concept design phase, we have been:

- Engaging with landowners to discuss project details and facilitate site investigations and walkovers on properties.
- Working with government agencies and stakeholders in the area to develop the design and plan for Stage 2.
- Carrying out site investigations in the area including surveying and geotechnical and contamination assessments.

The proposed layout of Stage 2 and information about Stage 1 is detailed on the following pages.

Please note that the design of Stage 2 is subject to change as the project progresses and further consultation and investigations are carried out.

## Working with the community

Throughout the delivery of this project, we will work with impacted landowners, local councils and other stakeholders to provide early and accurate information, and to keep the community informed about project progress.

Sydney Water is committed to working with the community to minimise impacts and deliver benefits. We plan our projects to avoid sensitive areas as much as possible, and we take steps to minimise any impacts from this work on the environment and community.

We’d like to thank landowners for their cooperation and engagement as we work to deliver this essential infrastructure.

## Staging services

The Badgerys Creek wastewater servicing project is being delivered in stages to ensure the right services are delivered at the right time.

Stage 1 will service part of the catchment and transfer limited wastewater to the Liverpool wastewater network. Stage 2 is the long-term servicing solution for the catchment.

Stage 1 involves:

- Wastewater trunk mains will be constructed along Mersey Road and Badgerys Creek Road and will transfer wastewater to a new pumping station at Pitt Street.
- From Pitt Street, flows will be pumped via an existing Sydney Water pipeline into the Liverpool wastewater network during this stage only.

Stage 1 has been progressed and is currently in the detailed design phase. This stage will be constructed and operational prior to Stage 2.

Once Stage 2 is constructed, wastewater from across the catchment will be directed to the Upper South Creek AWRC where it will be treated to the highest quality and reused or returned to the environment.

## Project status

### Until mid-2023 – Concept design

Investigations for Stage 2 pipelines and pump station, including site walks, surveying, boreholes and test pits.

Consultation with landowners, local councils and other stakeholders on the location and design of the planned infrastructure.

### From late 2023 – Detailed design

We'll continue to develop the design for Stage 2 and carry out further investigations. We'll consult with landowners, local councils and other stakeholders to discuss details and gather feedback.

### From 2024 – Construction for Stage 1

(Timing subject to change pending approvals, scheduling, weather and other circumstances.)

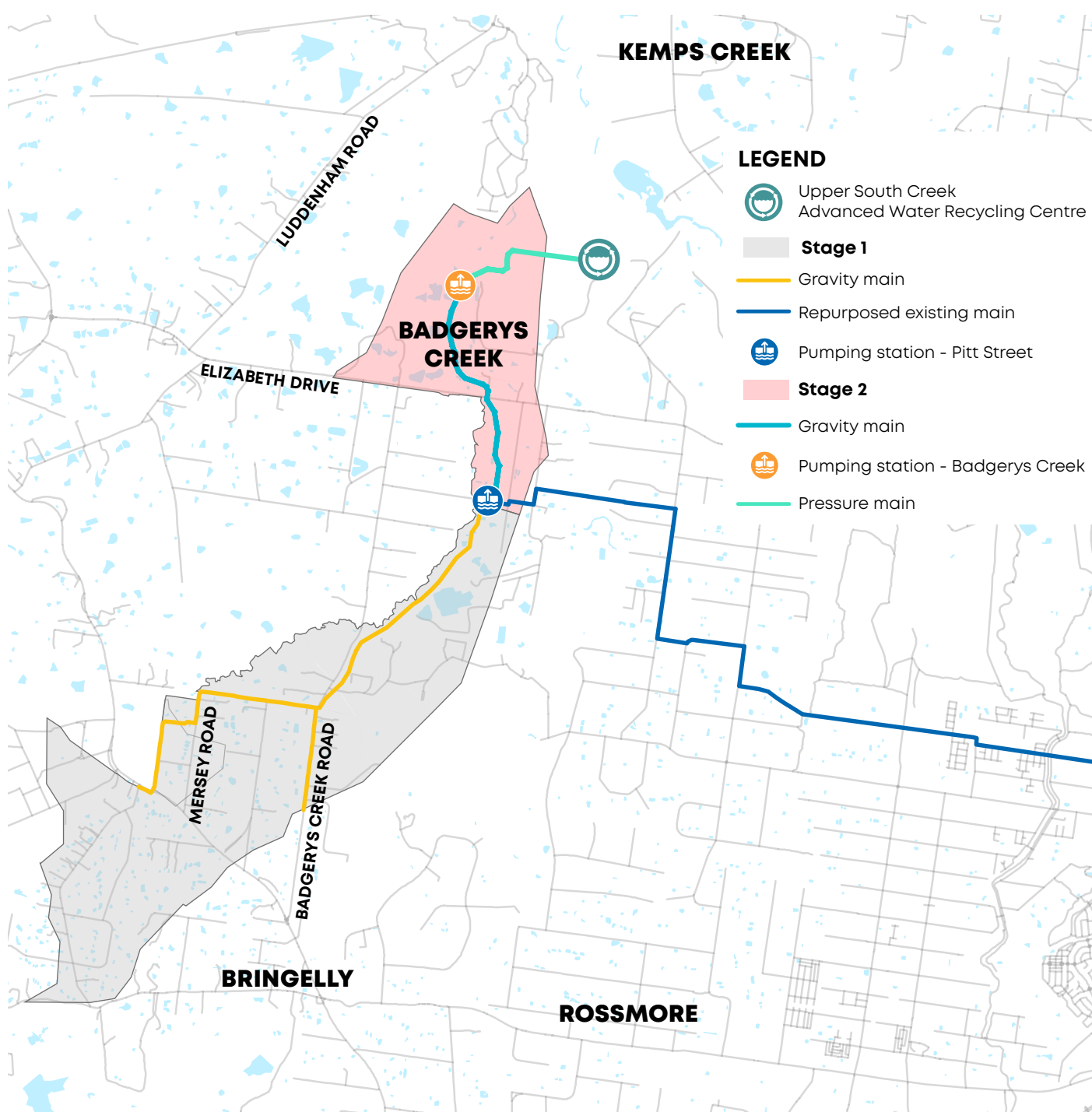
### From 2025 – Construction for Stage 2

(Timing subject to change pending approvals, scheduling, weather and other circumstances.)



*Artist's impression of the new Upper South Creek Advanced Water Recycling Centre at Kemps Creek.*

## Badgerys Creek project map



DISCLAIMER: Sydney Water has made every effort to provide up-to-date information in this map. The map is intended for guidance only and many factors can affect information contained in it. Catchments for area serviced are subject to change during detailed design/construction and change in finished ground levels. Sydney Water makes no representation, warranty, undertaking or guarantee (express or implied) that the information in this map is accurate or reliable. Any use or reliance on this information is taken at your risk. To the extent permitted by law, in no event will Sydney Water be liable for any loss, cost, expense, claim, liability or damage arising from or in connection with the information provided in this map.



## Servicing Western Sydney

Sydney Water is delivering essential infrastructure across the Western Sydney Aerotropolis Growth Area to support new communities and a growing city. Some of our current work is listed below.

### Stormwater management

The NSW Government appointed Sydney Water as the trunk drainage authority for the Mamre Road precinct and initial precincts of the Western Sydney Aerotropolis. In this role, we will undertake the planning, delivery and operation of regional stormwater infrastructure to keep stormwater in the landscape, maximise the availability of recycled water and maintain waterway health.

This approach takes a region-wide approach to stormwater management which will deliver the greatest benefit to the community and create a liveable and sustainable city. This work will continue to evolve in line with precinct development until about 2056.

For more information about this work and to get in touch with the team, please see [sydneywatertalk.com.au/aerostormwater](https://sydneywatertalk.com.au/aerostormwater).

### Drinking water services

We are delivering trunk drinking water infrastructure to service the initial precincts and future growth across the Aerotropolis. This infrastructure is being delivered in stages from now up to 2030.

We have already delivered new trunk mains along Luddenham Road, Badgerys Creek Road and Elizabeth Drive, and work is currently underway to install new trunk mains at Kemps Creek.

### Wastewater services

We are planning new wastewater infrastructure across the Western Sydney Aerotropolis Growth Area. This will service parts of Luddenham as well as service growth in parts of the Aerotropolis Core, Agribusiness and Mamre Road precincts. This work will be delivered in stages in line with development of the precincts. In the long term, wastewater treatment in the Aerotropolis will be provided by the Upper South Creek AWRC.

Interpreter Service 13 14 50

Arabic • Chinese • Greek • Italian • Korean • Vietnamese • Hindi • Punjabi

إذا كنت تحتاج إلى مترجم، يرجى الاتصال بالرقم أعلاه.

如果您需要傳譯員的協助，請致電以上的號碼。

Αν χρειάζεστε διερμηνέα, τηλεφωνήστε στον παραπάνω αριθμό.

## Upper South Creek Advanced Water Recycling Centre

Sydney Water will soon start work on our new advanced water recycling centre in Kemps Creek near the upper Wianamatta-South Creek.

The Upper South Creek AWRC and associated pipelines will be built to service the population and economic growth of Western Sydney, including the Western Sydney Aerotropolis Growth Area.

The AWRC will receive wastewater from homes and businesses across Western Sydney and treat around 70 megalitres of wastewater each day. As part of the process of treating wastewater, the facility will also produce high-quality water suitable for a wide range of non-drinking uses in homes, industry and business, agriculture and watering of public open spaces.

The AWRC is expected to be operational in 2026.

For more information about the Upper South Creek AWRC and to get in touch with the team, please see [sydneywatertalk.com.au/upperouthcreek](https://sydneywatertalk.com.au/upperouthcreek).

## Contact us

For more information about this work, please contact our community engagement team on 1800 560 857 or email [badgeryswwservice@sydneywater.com.au](mailto:badgeryswwservice@sydneywater.com.au)

Se vi serve un interprete, telefonate al numero indicato sopra.

통역사가 필요하시면 위의 번호로 전화하십시오.

Nếu quý vị cần thông dịch viên, hãy gọi đến số trên đây.

यदि आपको दुभाषिए की सहायता की ज़रूरत है, तो कृपया ऊपर दिए गए नम्बर पर फोन करें।

ਜੇ ਤੁਹਾਨੂੰ ਦੋਭਾਸ਼ੀਏ ਦੀ ਮਦਦ ਦੀ ਲੋੜ ਹੈ, ਤਾਂ ਕ੍ਰਿਪਾ ਕਰਕੇ ਉੱਤੇ ਦਿੱਤੇ ਨੰਬਰ 'ਤੇ ਫੋਨ ਕਰੋ।