

# We're working in your area

1 April 2026

We are building new wastewater pipelines and pumping stations as part of the Upper South Creek Networks Program to ensure that Western Sydney's growing communities are connected to world-class wastewater services.

Over the next 12 years, Sydney Water and CreekConnect will work together with our contractors to build the new wastewater pipelines and pumping stations across the Upper South Creek precincts.

## What you need to know

Construction will shortly begin in the Thompsons Creek precinct to deliver a new wastewater pumping station and 8 km of new wastewater pipelines.

The Thompsons Creek wastewater pipeline alignment has been split into two sections:

- Thompsons Creek North, which will connect to the South Creek wastewater pipeline, is being delivered by Tunnelling Solutions from Martin Road to Rossmore Grange and,
- Thompsons Creek South, from Rossmore Grange to Medich Place, is being delivered by McConnell Dowell.

Starting in early April, the initial six months of work will include:

- Site establishment: to set up site offices, facilities, laydown and work areas
- Clearing of vegetation and installing fencing around work areas
- Building the temporary access tracks to maintenance hole locations
- Excavating, compacting and levelling of ground surfaces

- Surveying activities, including using a drone camera above our work areas
- Deep excavation work to construct the maintenance holes and enable the underground drilling activities
- Using underground tunnelling machines to install the wastewater pipelines
- Drilling piles or spraying shotcrete, installing steel formwork and pouring concrete
- Delivery and removal of materials and equipment to and from site, which may include out-of-hours deliveries of oversized plant and equipment.

The maps over the page shows our work areas.

### Our work schedule



Our construction work is expected to start in **early April 2026** and expected to take approximately **12 months** to complete, weather and ground conditions permitting.

### Standard work hours



Our standard work hours are **7 am to 6 pm, Monday to Friday**, and **8 am to 1 pm on Saturdays**.

We may work extended hours, from **7 am to 6 pm, Monday to Sunday**. Typically, we will work a 6-day week, but we may work on Sundays depending on the progress of construction.

We won't work on public holidays. If we need to work outside standard hours, we will notify you in advance.

### Out of hours

There could be some micro tunnelling or truck deliveries carried out along the Thompsons Creek alignment out of hours. This will be subject to further consultation with those directly impacted and will be in line with the project's environmental protection licence.

## What you can expect

We know our work can be disruptive, so we'll make every effort to reduce any impact this work may have on you. You may experience:

### Noise



At times, there will be some noise from heavy machinery such as cranes and excavators, as well as energy generators.

We'll keep noise to a minimum, avoid unnecessary loud noises and follow all mitigation measures in the construction environmental management plan.

### Dust and mud

Some of our work will create dust, which can get worse in windy weather. We will manage dust by wetting down our work areas, access tracks and stockpiled material. We will inspect our work areas often to make sure they are tidy. The implementation of other mitigation measures such as street sweepers or washdown bays may be used to ensure mud is not tracked off site onto local roads.

### Truck movements



There will be frequent vehicle movements in and out of our work areas. Truck movements will vary each day depending on the work activity.

When needed, our traffic controllers will help keep traffic flowing safely and minimise disruption to local traffic. We will make sure our workers understand the importance of driving safely and within speed limits.

### Impact to services



Your water and wastewater services will not be impacted while we do this work.

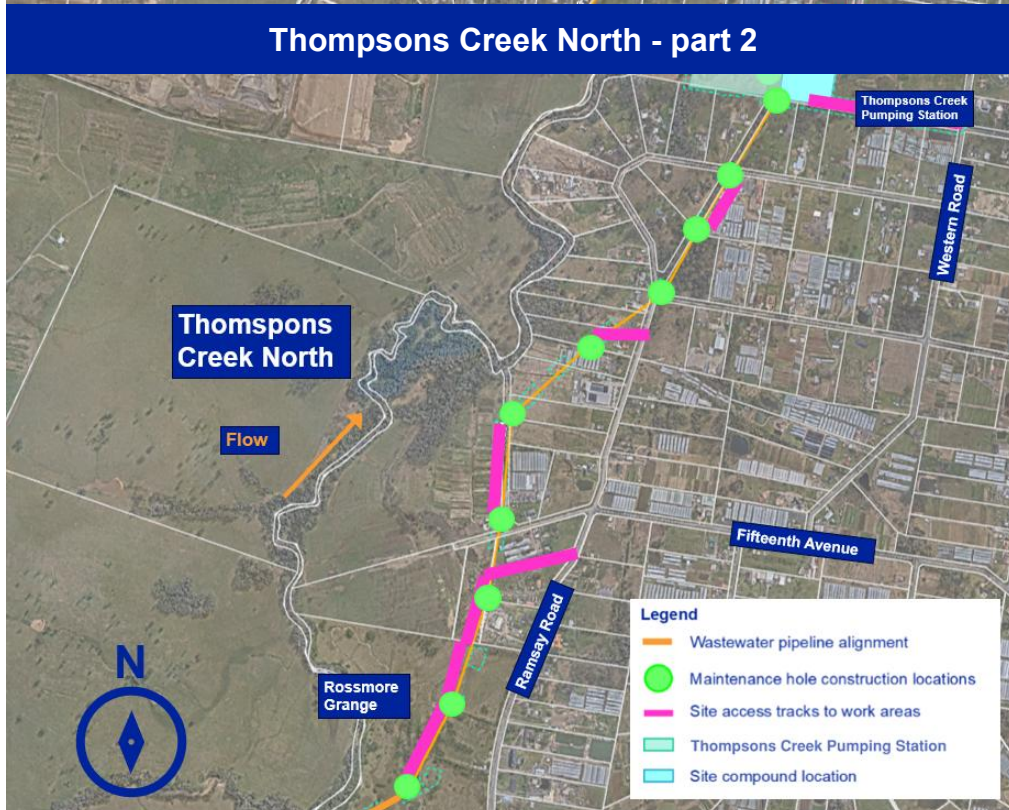
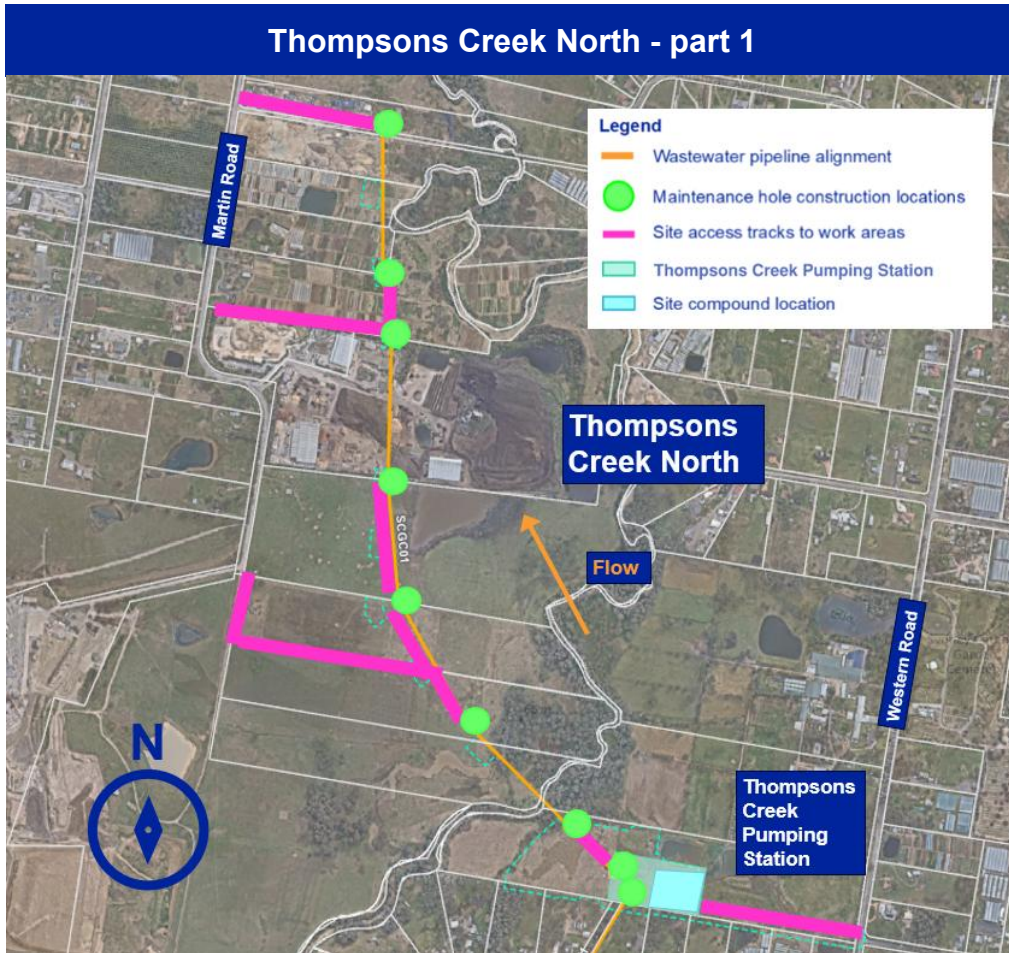
### Restoration

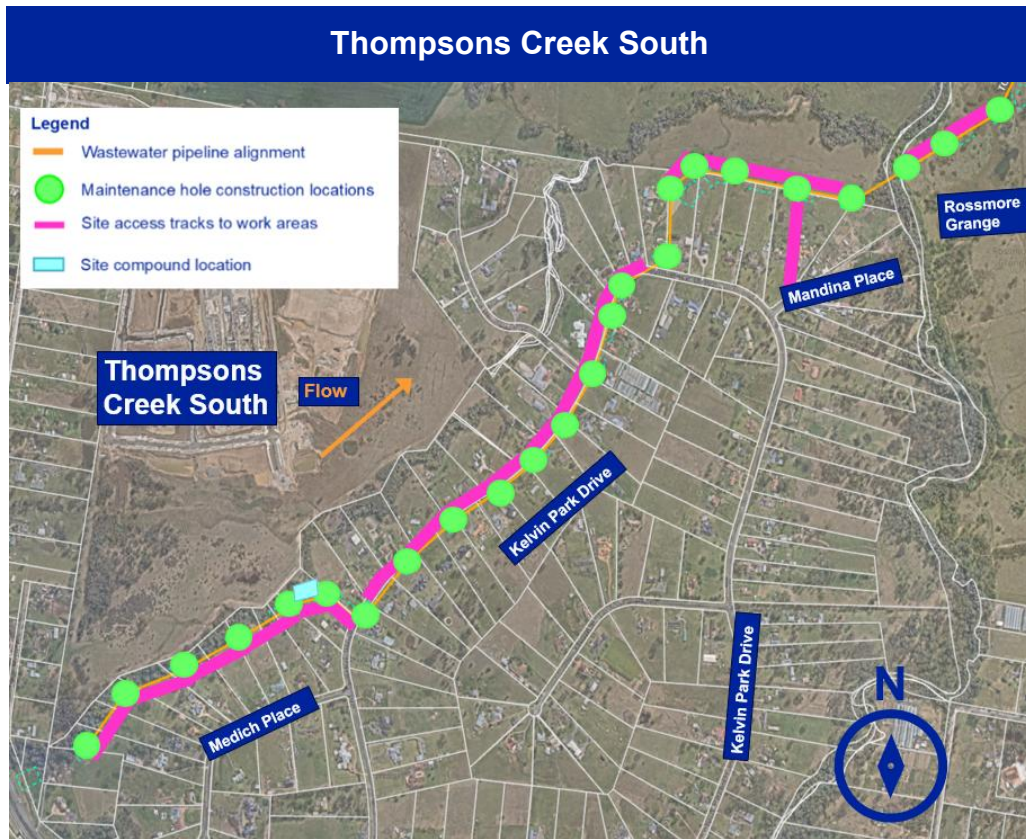


We will take photos of our work areas before we start so that it is restored as close as possible to the original condition.

We are working closely with impacted landowners to ensure impacts to private property are managed effectively and impacted areas are restored once our work is complete.

Our work areas





## We speak your language

If you need a free interpreter, please call 13 14 50

Arabic | Italian | Chinese (Traditional) | Chinese (Simplified) | Spanish | Croatian

إذا كنت بحاجة إلى مترجم، اتصل برقم الهاتف المذكور أعلاه

Se hai bisogno di un interprete, chiama il numero sopra

如果您需要口譯員，請撥打上面列出的電話號碼如果您需要

口译员，请拨打上面列出的电话号码

Si necesita un intérprete, llame al número que figura arriba

Ako trebate prevoditelja, nazovite gornji broj

## Where to get more information

If you would like to know more, please contact our Community Engagement Team at [uscnetworks@sydneywater.com.au](mailto:uscnetworks@sydneywater.com.au) or call 1800 010 083.

### Subscribe for email updates

Scan the QR code to subscribe for email updates or to visit the project website



[www.sydneywater.com.au/uscnetworks](http://www.sydneywater.com.au/uscnetworks)

If you need to make special arrangements, please reach out to us so we can work with you.

Thank you for your cooperation during this essential work.