

Upcoming work in your area

21 November 2025

We are continuing construction on the first stage of work on the Upper South Creek Networks Program, providing world-class wastewater services to Western Sydney's growing communities.

Our work is continuing in the South Creek precinct, to deliver key wastewater infrastructure, including a new pumping station and 2.7 km of new wastewater pipelines.

What you need to know

We have engaged **Vaughan Civil** to start construction of the new South Creek wastewater pipeline along Martin Road and north of Elizabeth Drive.

Starting in late November, the initial six months of work will include:

- Site establishment to set up site offices, facilities, laydown and work areas
- clearing of vegetation and installing fencing around work areas
- building the temporary access tracks to maintenance hole locations
- excavating, compacting and levelling of ground surfaces
- deep excavation works to construct the maintenance holes and enable the underground drilling activities
- using underground drilling machines to install the wastewater pipes
- drilling piles, installing steel formwork and pouring concrete
- surveying activities, including using a drone camera above our work areas
- delivery and removal of materials and equipment to and from site, which may include out-of-hours deliveries of oversized plant and equipment.

The map on the last page shows our work areas.

Update on South Creek pumping station

Fulton Hogan started early work on the South Creek pumping station in April 2025. Upcoming work activities include:

- Drilling piles, formwork and steel fixing, and concrete work
- construction of a new access road, including excavation, delivery of materials and compacting road base
- excavation work for the underground structures
- installation of drainage pipes and conduits.

Our work schedule



Vaughan Civil will start work on the South Creek gravity carrier in **late November 2025** and scheduled to finish by **early 2027**, weather and ground conditions permitting.

Construction of the South Creek pumping station and wastewater pipes is expected to be completed by **early 2027**.

Standard work hours



Our standard work hours are **7 am to 6 pm, Monday to Friday**, and **8 am to 1 pm on Saturdays**.

We will work extended hours, from **7 am to 6 pm, Monday to Sunday**. Typically, we will work a 6-day week, but we may work on Sundays depending on progress on site.

We won't work on public holidays. If we need to work outside these hours, we will notify you in advance.



Out-of-hours work



Some work will need to take place outside standard construction hours to minimise traffic impacts or ensure the safety of pedestrians, motorists, and our workers.

We may have out-of-hours deliveries of oversized plant and equipment between **8pm and 5am, Monday to Saturday**.

We will occasionally work extended hours during concrete pours from **6pm to 10pm Monday to Friday**. We will only work extended hours as a contingency, if concrete pours take longer than expected and need to be completed in one go. This helps us to make sure the structures are strong and built to a high standard.

Out-of-hours work will be carried out in line with the project environmental protection licence, road occupancy licences, and Transport for NSW requirements.

Truck movements



There will be frequent vehicle movements in and out of our work areas. Truck movements will vary each day depending on the work activity.

When needed, our traffic controllers will help keep traffic flowing safely and minimise disruption to local traffic. We will make sure our workers understand the importance of driving safely and within speed limits.

Dust and mud



Some of our work will create dust, which can get worse in windy weather. We will manage dust by wetting down our work areas, access tracks and stockpiled material. We will inspect our work areas often to make sure they are tidy and organise a street sweeper to make sure mud is not tracked off site onto local roads.

What you can expect

We know our work can be disruptive, so we will make every effort to reduce any impact this work may have on you. You may experience:

Noise



At times, there may be some noise from the digging and heavy machinery. We will keep noise to a minimum, avoid unnecessary loud noises and follow all mitigation measures in the construction environmental management plan.

Impact to services



Your water and wastewater services will not be impacted while we do this work.

Restoration

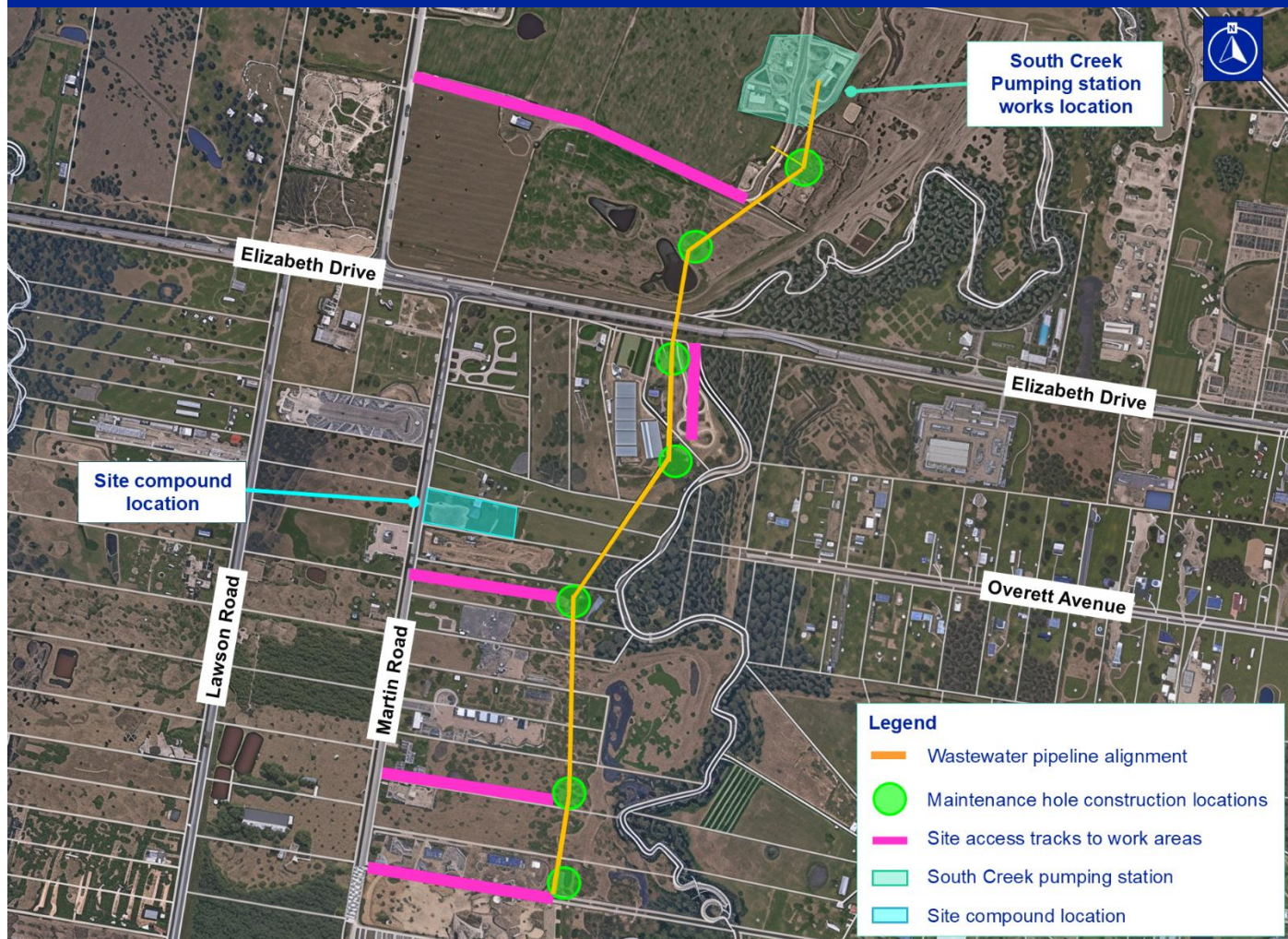


We will take photos of our work areas before we start so that it is restored as close as possible to the original condition.

We are working closely with impacted landowners to ensure impacts to private property are managed effectively and impacted areas are restored once our work is complete.



South Creek precinct – our work area



We speak your language

If you need a free interpreter, please call 13 14 50

Arabic | Italian | Chinese (Traditional) | Chinese (Simplified) | Spanish | Croatian

إذا كنت بحاجة إلى مترجم، اتصل برقم الهاتف المذكور أعلاه

Se hai bisogno di un interprete, chiama il numero sopra

如果您需要口譯員，請撥打上面列出的電話號碼如果您需要

口译员，请拨打上面列出的电话号码

Si necesita un intérprete, llame al número que figura arriba

Ako trebate prevoditelja, nazovite gornji broj

Thank you for your cooperation during this essential work.

Where to get more information

If you would like to know more, please contact our Community Engagement team at uscnetworks@sydneywater.com.au or call 1800 010 083.

Subscribe for email updates

Scan the QR code to subscribe for email updates or to visit the project website



www.sydneywater.com.au/uscnetworks