

22 June 2026

Ryde to Pymble pipeline upgrade – Compound establishment – Santa Rosa Park, Ryde – including easement

To support Sydney’s growing communities, Sydney Water is reinstating the Ryde to Pymble (RP03) water pipeline to strengthen network resilience and support population growth across Sydney’s northern suburb.

To complete this work, our delivery partners McConnell Dowell–Gamuda Joint Venture (MDGJV) will be establishing a compound site at **Santa Rosa Park, Ryde** from **Monday, 29 June 2026** to late **December 2027**, weather permitting.

What you need to know

This site includes two compound sites (Quarry Road – South / Bridge Road – North) and the easement along the park. The compounds will be used to store equipment and materials needed for the construction of RP03. It will also provide site offices, worker amenities, and parking to support nearby construction activities.

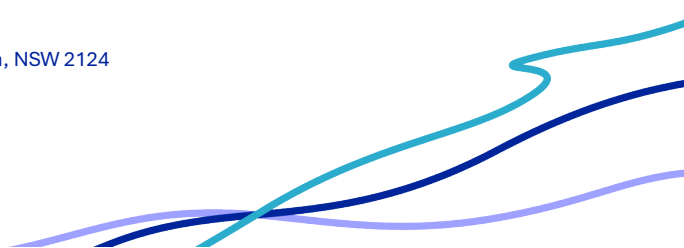
The easement will be used for early work service investigations, access to the compounds and the trenching of the RP03 pipeline.

To maintain access to the park, a new temporary footpath will be constructed. The footpath can be accessed via the car park on the southern side of the park (Quarry Road) and will connect to the footpath diversion.

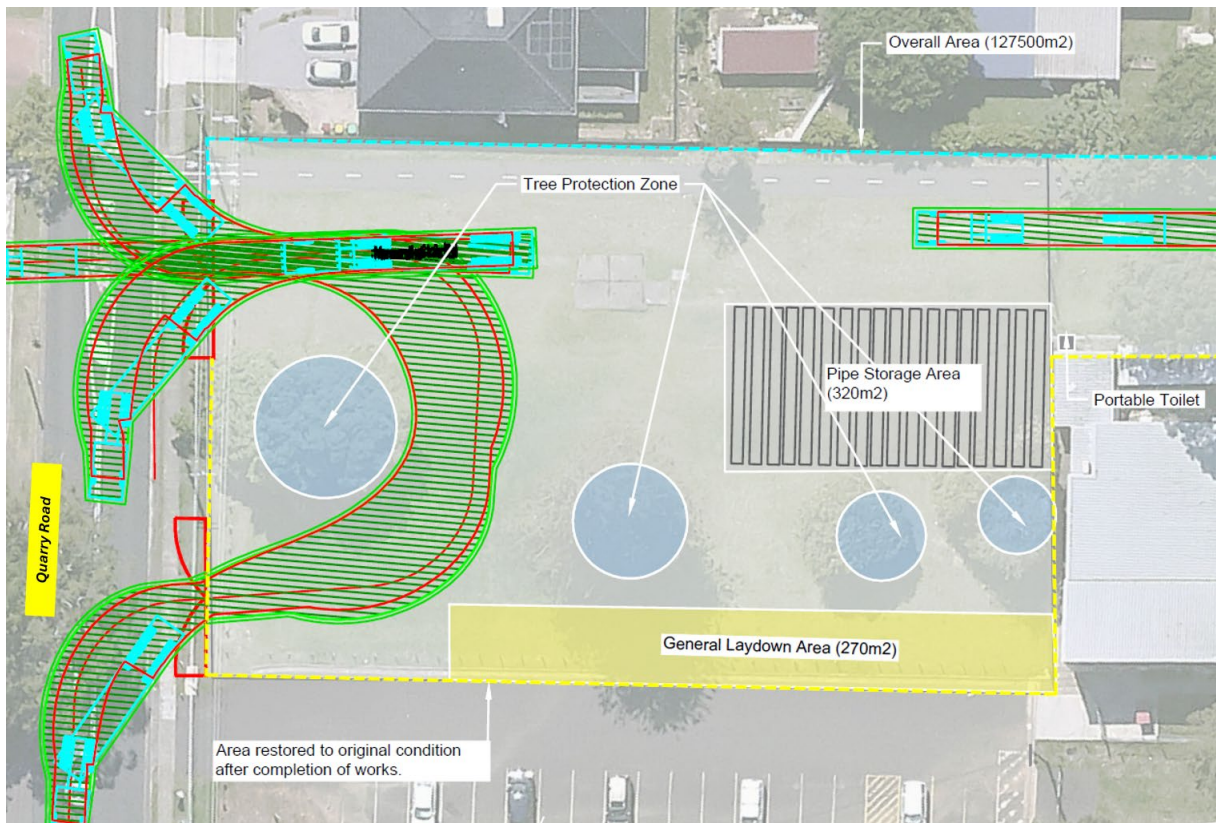
The compound sites and easement will be secured with fencing to protect stored materials and equipment. You may notice more trucks travelling to and from the site throughout the day as work is carried out.

Our work hours

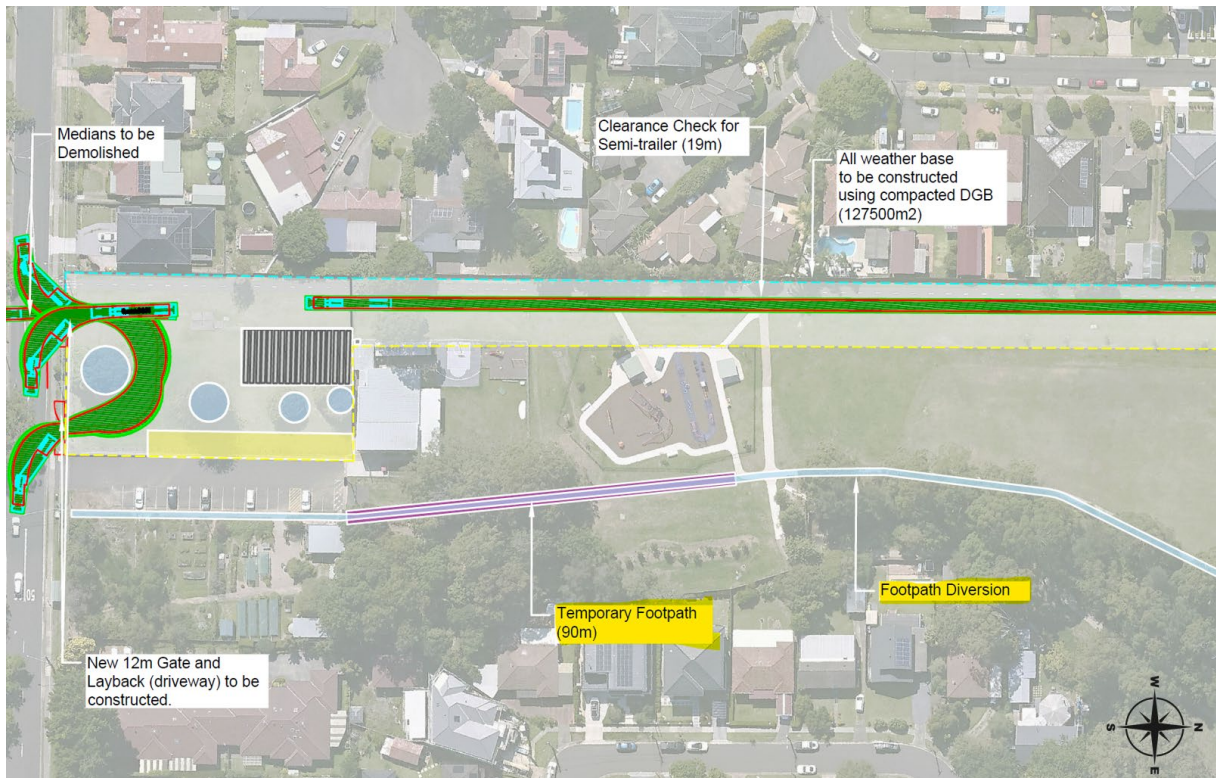
Our working hours are between **7am and 6pm Monday to Friday and 8 am to 1pm on Saturdays**. There will be **no work on Sundays or public holidays**. From time to time, we may need to work outside of these hours. We’ll make sure to keep you informed ahead of time, so you know what to expect.



Quarry Road compound – Southern side



Quarry Road compound – Southern side – temporary footpath



Bridge Road compound – Northern side



Map of easement and compounds



Minimising noise and dust

We know our work can be disruptive, and we'll make every effort to reduce any impact this work may have on you. During this time, you may experience some noise and dust from our activities. We'll continue to monitor noise and dust levels and work directly with affected residents to mitigate noise wherever feasible. To minimise noise and dust during our work, we'll put the following measures in place when needed:

- Provide noise barriers and acoustic sheds
- Undertake noisy work during core work hours, where possible
- Ensure all equipment is shut down when not in use and non-tonal reversing beepers used on vehicles
- The use of noise blankets
- Dust suppression methods i.e. watering down the site to minimise dust from becoming airborne
- Materials that are prone to generating dust are covered when not in use
- Develop a waste management plan

Where do I get more information?

We're committed to keeping you informed by sending out a weekly email update which will include upcoming work and project updates. If you would like to be added to our email distribution list, please scan the QR code which will direct you to our website where you can subscribe.



Call: 1800 664 935
Email: rydepymblepipeline@sydneywater.com.au
Visit: www.sydneywater.com.au/ryde-to-pymble-pipeline

Interpreter service 13 14 50

Arabic | Chinese (Traditional) | Chinese (Simplified) | Greek | Korean | Vietnamese

اتصل بالرقم أعلاه إذا كنت بحاجة إلى مترجم

如果您需要口譯員，請撥打上面列出的電話號碼

如果您需要口译员，请拨打上面列出的电话号码

Εάν χρειάζεστε διερμηνέα, καλέστε τον αριθμό που αναφέρεται παραπάνω

통역이 필요한 경우 위에 나열된 번호로 전화하십시오.

Nếu bạn cần thông dịch viên, hãy gọi số điện thoại được liệt kê ở trên