

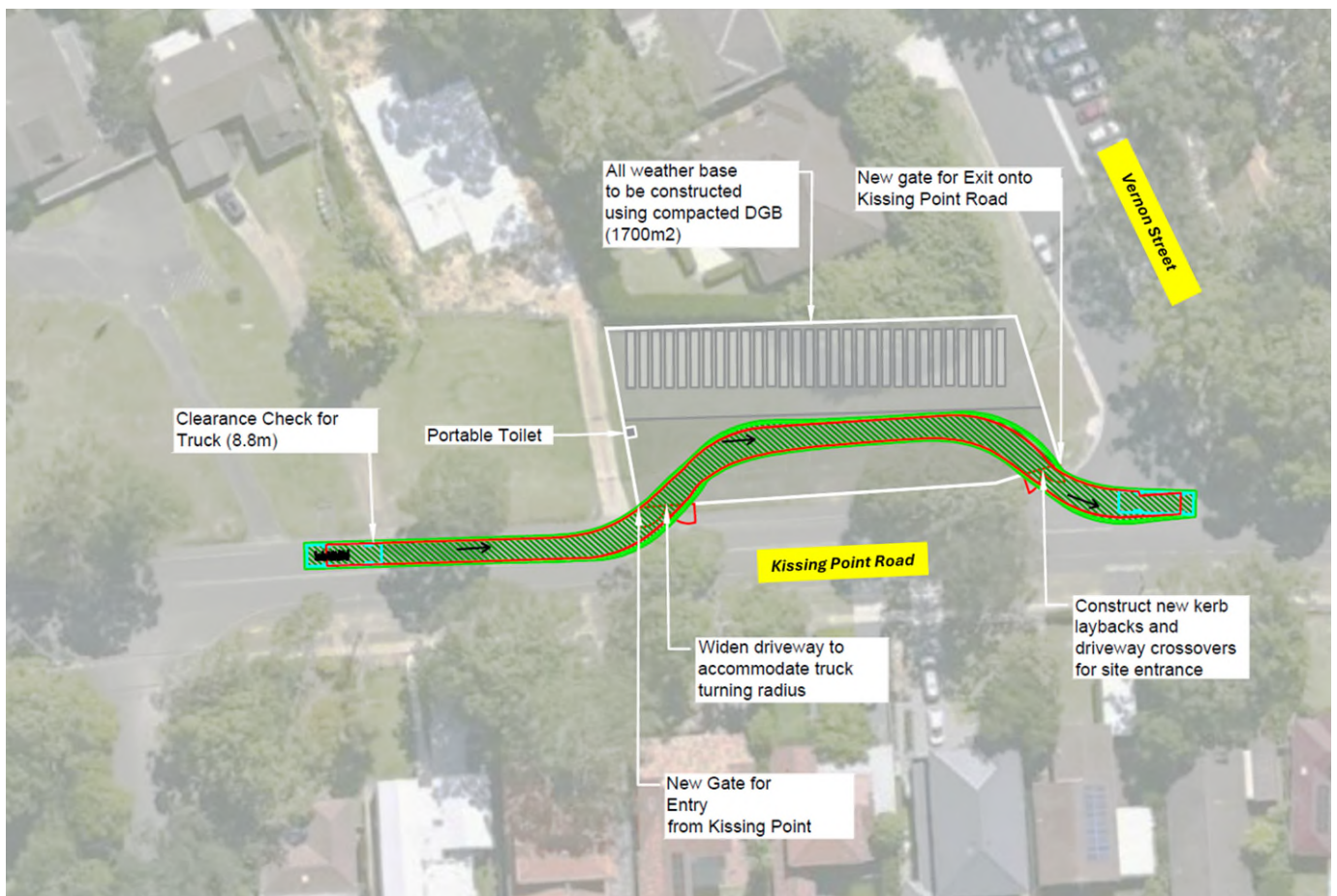
15 May 2026

## Ryde to Pymble pipeline upgrade – Compound establishment – Kissing Point Road (Verge) - Turramurra

To support Sydney’s growing communities, Sydney Water is reinstating the Ryde to Pymble (RP03) water pipeline to strengthen network resilience and support population growth across Sydney’s northern suburb.

To complete this work, our delivery partners McConnell Dowell–Gamuda Joint Venture (MDGJV) will be establishing a compound site at **Hermitage Reservoir, Ryde** from **Wednesday, 26 May 2026** to late **December 2027**, weather permitting.

### Map of compound area – Kissing Point Road – Verge, Turramurra



Sydney Water Corporation ABN 49 776 225 038

2 Parramatta Square, 1 Smith Street, Parramatta, NSW 2150 | PO Box 399, Parramatta, NSW 2124

Telephone 13 20 92 [sydneywater.com.au](http://sydneywater.com.au)



## What you need to know

This site compound will be used to store equipment and materials needed for the construction of RP03. It will also provide site offices, worker amenities, and parking to support nearby construction activities.

The compound will be secured with fencing to protect stored materials and equipment. During construction, you may notice more trucks travelling to and from the site throughout the day as work is carried out.

## Our work hours

Our work hours are between **7am and 6pm Monday to Friday and 8 am to 1pm on Saturdays**. There will be **no work on Sundays or public holidays**.

Occasionally, we may need to work outside these hours. If this happens, we will contact any affected residents in advance.

## Minimising noise and dust

We understand our work may cause some disruption and will do our best to reduce any impact on residents. During construction, there may be some noise and dust from our activities. We will regularly monitor noise and dust levels and work with affected residents to reduce impacts where needed.

To help minimise noise and dust, we may use the following measures when required:

- Install noise barriers and acoustic walls
- Turn off equipment when not in use and use quieter reversing beepers on vehicles
- Use dust control methods such as sprinklers around fencing and water carts on site
- Cover materials that may create dust when they are not being used
- Implement a waste management plan

## Where do I get more information?

We're committed to keeping you informed by sending out a weekly email update which will include upcoming work and project updates. If you would like to be added to our email distribution list, please scan the QR code which will direct you to our website where you can subscribe.



**Call:** 1800 664 935  
**Email:** rydepymblepipeline@sydneywater.com.au  
**Visit:** [www.sydneywater.com.au/ryde-to-pymble-pipeline](http://www.sydneywater.com.au/ryde-to-pymble-pipeline)

### Interpreter service 13 14 50

Arabic | Chinese (Traditional) | Chinese (Simplified) | Greek | Korean | Vietnamese

اتصل بالرقم أعلاه إذا كنت بحاجة إلى مترجم

如果您需要口譯員，請撥打上面列出的電話號碼

如果您需要口譯員，請撥打上面列出的電話號碼

Εάν χρειάζεστε διερμηνέα, καλέστε τον αριθμό που αναφέρεται παραπάνω

통역이 필요한 경우 위에 나열된 번호로 전화하십시오.

Nếu bạn cần thông dịch viên, hãy gọi số điện thoại được

liệt kê ở trên