

Refresh Vaucluse and Diamond Bay



Cleaning our blue backyard together

We're working to give this iconic area the blue backyard it deserves

We're excited to be working with you to change our wastewater system. A legacy from the past, the wastewater system from Watsons Bay to Dover Heights was never completed. Wastewater captured from this part of Sydney is not treated – instead it's discharged directly into the ocean at three locations along the cliff face at Vaucluse, Diamond Bay and Dover Heights. We're now taking steps to change this!

Last year we released our *Review of Environmental Factors* (REF), a report covering the work we need to do to fix the system and send the wastewater to Bondi's treatment plant. It assessed how our plans will both impact and benefit the environment, both during construction and in the long term.

We asked you for your feedback on the REF (which is still available online at sydneywatertalk.com.au/vauclusediamondbay) and this is what you had to say:

It's about time!

The support to clean up our blue backyard has been overwhelming. During our virtual information sessions and when speaking with residents, you said you could see the long-term benefit of this project – our blue backyard is important and it's time we cleaned it up.

The 33 written submissions we received in response to the REF were primarily focused on the new infrastructure being built. What it will look like, how it'll be built and how it will impact on the local and broader community.

We have responded to these submissions in a Decision Report, which is now publicly available to download at sydneywatertalk.com.au/vauclusediamondbay.



Sydney
WATER

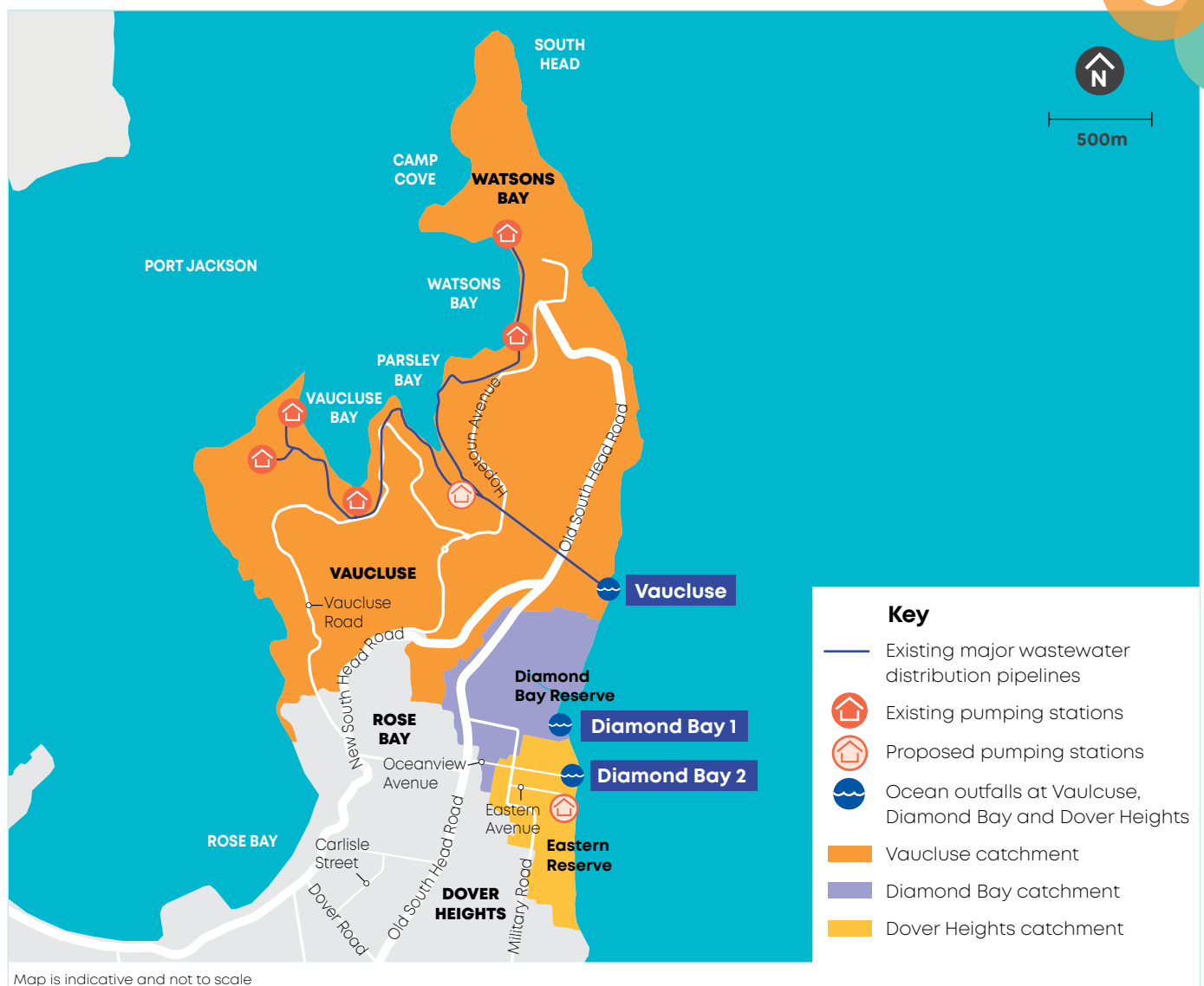
Better together

We believe your input will only make this project better. After listening to feedback from the REF, we did some more investigations and acted on some of your recommendations. We're pleased to let you know about some of these changes.

Parsley Bay

Over half of the submissions we received were about the work proposed at Parsley Bay. So, we want to explain why Parsley Bay was chosen as the location for this project.

All the wastewater we collect in the Vaucluse catchment (see map below) passes through Parsley Bay. Two key pipes funnel all the wastewater we collect from Vaucluse, Watsons Bay and Rose Bay North into the ocean via a third pipe, the Vaucluse Ocean Outfall Sewer. These three pipes intersect underground at Parsley Bay. This makes Parsley Bay a critical location and is why wastewater has to be re-directed there to go to the Bondi treatment plant.



Map of the wastewater catchments that discharge directly into the ocean via the outfalls.

Working with neighbouring residents and Woollahra Council, we've made changes to the pumping station design that will reduce its impact on the surrounding vegetation and landscape. It means the pumping station will be easier to build and the impact on residents reduced.

New look pump station

This new layout retains the existing greenscape. By re-orientating the pump station into the concrete car park we can minimise the impact on the natural leafy reserve next to the amenities block. Some vegetation removal and tree trimming will still be required, but it's greatly reduced compared to our original design.



Visualisation (subject to community consultation) of how the future pumping station could look



Parsley Bay, how it looks now

We'll also continue to work with Woollahra Council to minimise (or avoid completely) impacts to car parking capacity. We'll have more information to share with you once we begin the detailed construction planning for this project, which we estimate will begin in the next three months.

The existing amenities block will still need to be removed, to build the new pumping station, but will be replaced with new and improved facilities. We will work with Woollahra Council to determine possible locations for the new toilet and shower block. We will engage architects to design the new facility and involve the community in the process.

Eastern Reserve

How the pumping station at Eastern Reserve will look and the location of new above ground infrastructure was also raised in REF submissions. You told us it's important that the equipment blends in with the surrounding environment.

As a result of your feedback, we re-visited the pumping station design. A lot of work has gone into the design of this equipment so that it is mostly underground – minimising the visual impact.

While there are no changes to the concept design, we will continue to work with Waverley Council and the local community to finalise our plans. We will look for opportunities to further refine the pumping station's footprint and engage a landscape architect to advise on the sensitive placement of aboveground infrastructure.

Keeping our streets and parks green

The loss of trees and vegetation, particularly at Parsley Bay, was also a key concern. It's something we take very seriously and try to avoid. The importance of trees and green spaces in our community, which provide shade and help cool our urban areas, cannot be underestimated.

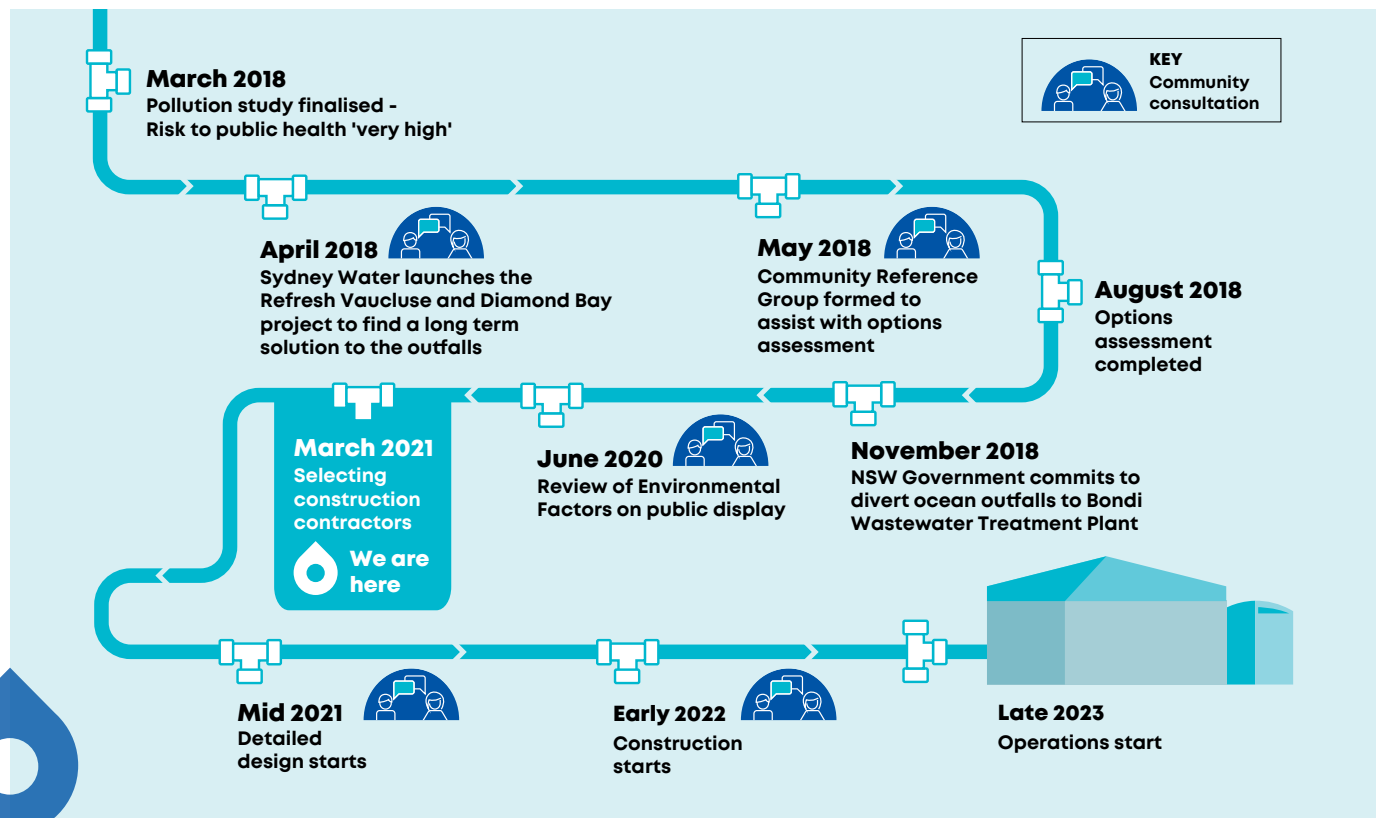
That is why we have a policy to offset any cleared vegetation at a higher ratio. For every tree removed, we will re-plant two or three in its place. Although it's not always possible to replace vegetation in the same

location, we'll consult with Waverley and Woollahra councils and work with local bushcare groups on vegetation replanting.

Decision Report

A more detailed response to the written submissions we received can be found in the Decision Report, which is available to download at sydneywatertalk.com.au.

To everyone who sent a written submission, a sincere thank you!



Next steps

We want to keep the conversation going as we continue our planning for this project.

Come have a chat and learn more about this project at one of our pop-up information sessions.

We're currently in the process of recruiting construction partners to deliver this project. We hope to announce who we'll be working with in the next couple of months.

We expect to start building this project early next year.

Get in touch

If you would like more information about the project:

Call – 1800 645 466

Email – vauclusediamondbay@sydneywater.com.au

View the Decision Report –

www.sydneywatertalk.com.au/vauclusediamondbay

Come talk to us

We'll be holding two information sessions in your local area:

Parsley Bay – 17 April 2021
9 am – 11 am

Eastern Reserve – 24 April 2021
9 am – 11 am

We look forward to meeting you in a COVID-safe environment.