

Refresh Vaucluse and Diamond Bay

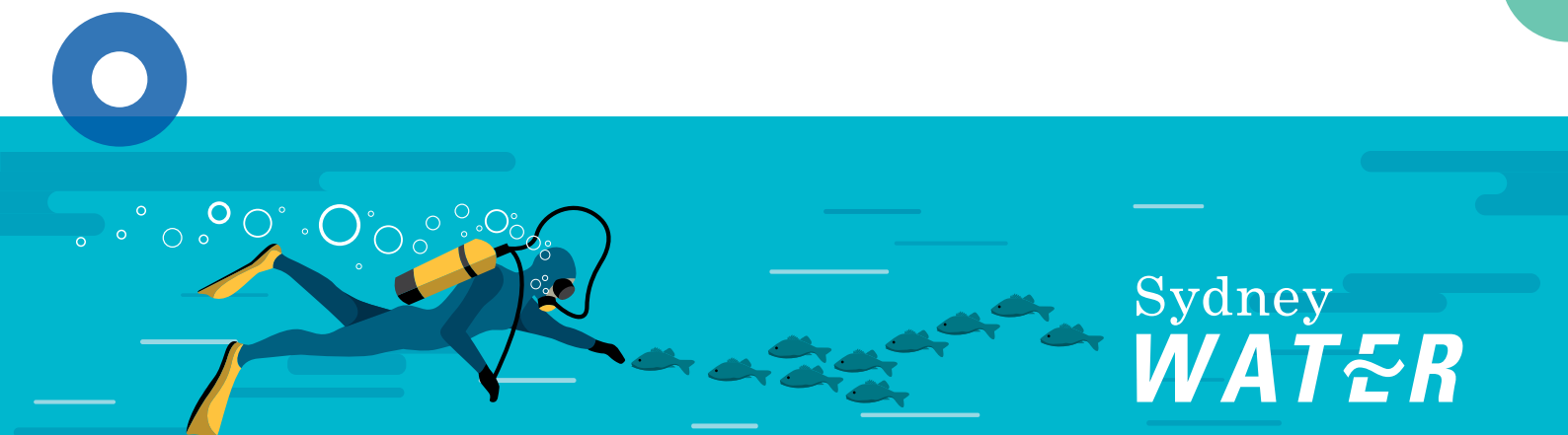


Cleaning our blue backyard together

We're one step closer to changing history! Below the cliffs of Vaucluse and Diamond Bay, wastewater flows directly into the ocean untreated and this is no longer acceptable. It's time for change and we're continuing to work to ensure this iconic area of Sydney gets the clean, blue backyard it deserves.

After years of planning, we've landed a solution that has the support of the local and wider Sydney community. Our solution will see wastewater diverted away from the ocean and sent to a nearby treatment plant in Bondi maximising the use of Sydney Water's existing network while keeping construction and environmental impacts to a minimum. We still need to build new infrastructure, but it's just enough to get the job done.

Since we last wrote to you, we've been assessing the potential construction and environmental impacts of building this solution. This work is now complete and we have a Review of Environmental Factors (REF) for you to look at.



Sydney
WATER

What is a Review of Environmental Factors?

Guided by the *Environmental Planning and Assessment Act 1979*, a REF looks at all the potential environmental impacts of the project as we build it and any potential impacts once it's up and running. The REF needs to cover all scenarios, even though there will be opportunities to improve or even eliminate some of these impacts as we continue to fine-tune this project.

This newsletter provides a snapshot of what new infrastructure we need and a general description of how and where we'll build it.

The REF has a lot more information, including:

- the background to this project and our proposed solution
- proposed construction activities, including work sites and hours
- potential environmental impacts, including traffic and access.

The next step is for you to let us know what you think.

We need your feedback

The REF is now on public display and we'd like you to let us know what you think.

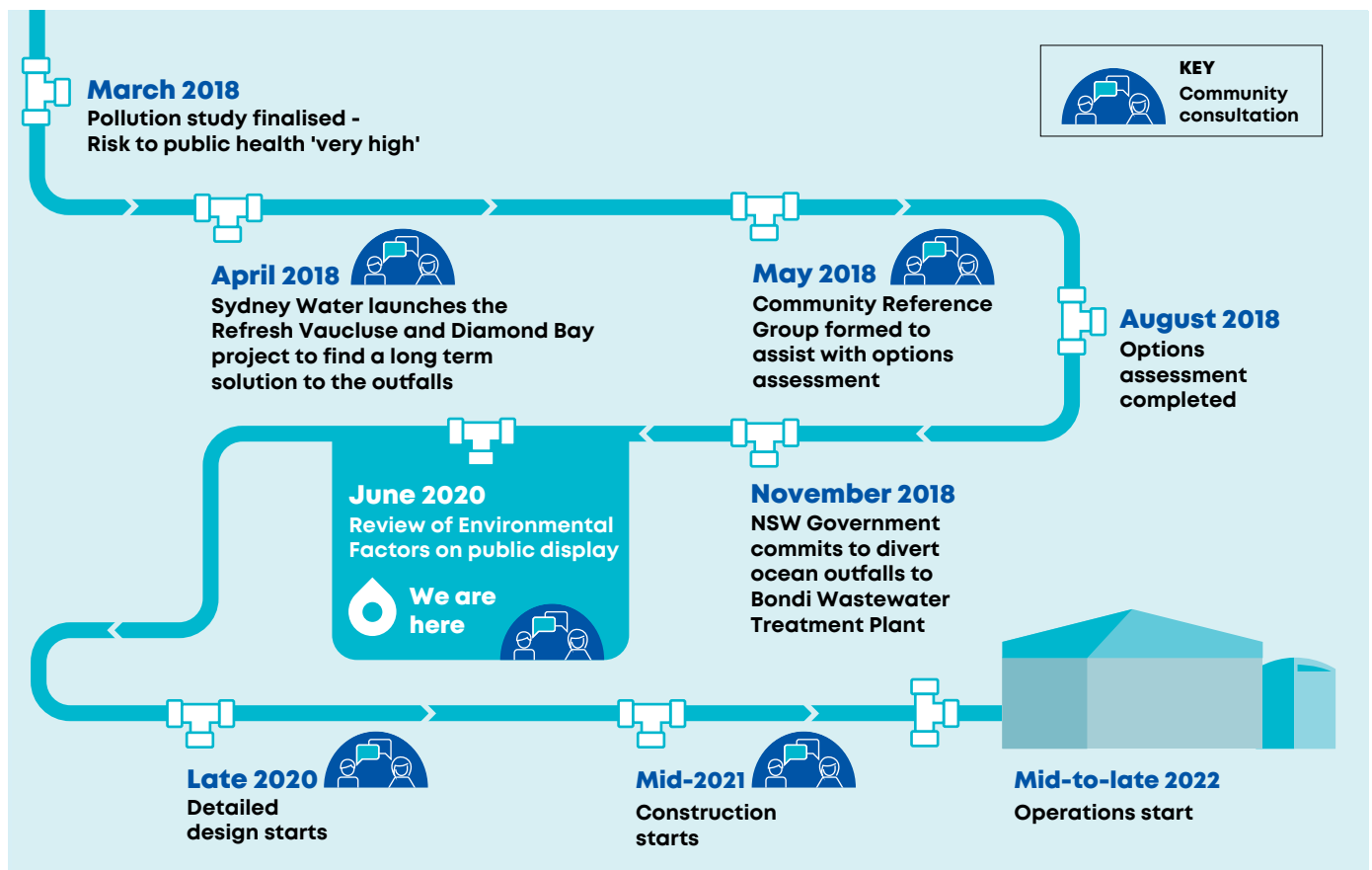
To take a look at the REF, scan the barcode overleaf with your phone and download our App, or go to sydneywatertalk.com.au

You can also call us on 1800 645 466 and we'll send you a copy (via email or post).

Once you've had a look, tell us what you think in writing. We'll be using this information to help us better plan the next stage – the detailed construction design.

Information on how to make a written submission is on the back page. As this is a formal process, please send us your written submissions by **Sunday 28 June 2020**.

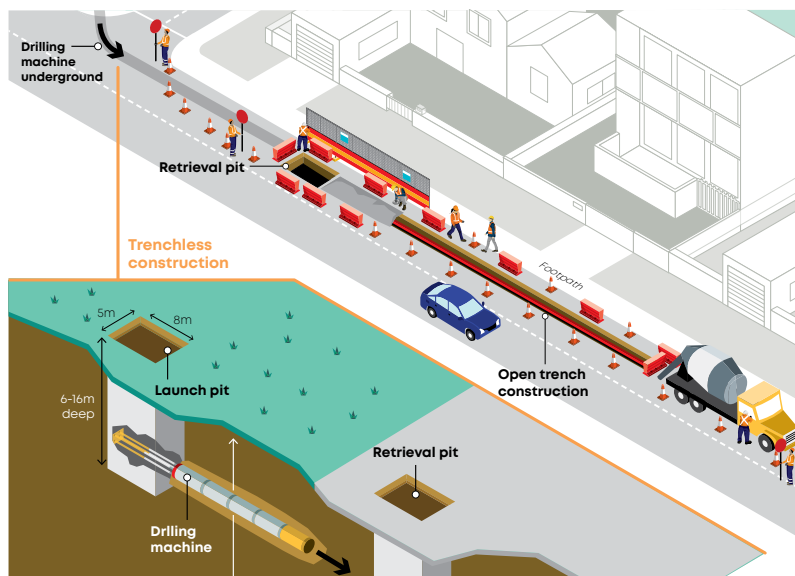
The journey to get here



Fixing an old system



The Refresh Vacluse Diamond Bay project.



We will use a mix of trenching and trenchless technology to install new pipes. Trenchless techniques involve digging pits in the road to launch and retrieve the pipe sections. This minimises the impacts to local communities.

It goes without saying that refreshing the wastewater system in Vacluse and Diamond Bay will have many environmental benefits – improving the harbour and coast water quality, protecting the health of marine ecology and community, and reducing odour – but it will also bring the wastewater system into line with the rest of Sydney.

We know it won't be simple or easy to retrofit a network nearly 100 years old but we also know it needs to be done.

So, this is how we're planning to connect the three ocean outfalls to Bondi's treatment plant.



Vaucluse

There is one ocean outfall in Vaucluse and our plan is to:

- build a new pumping station at Parsley Bay where the current toilet and shower block sits, to direct the wastewater away from the ocean
- build a new 1.8 km pipe to move the wastewater from Parsley Bay to Carlisle Street in Rose Bay. We will be using trenchless technology to dig a hole slightly wider than the pipe (37.5 cm) and insert the pipe up to 60 m below ground



Construction work at Parsley Bay.

- connect the new pipe from Carlisle Street to the existing Rose Bay submain on Dover Road. This section of pipe will be laid just below the surface by digging trenches along the roadway.

No further work is required because the existing Sydney Water network will be used to transfer the wastewater to the treatment plant in Bondi.



Construction work at Carlisle Street and Dover Road.

Diamond Bay

There are two ocean outfalls in Diamond Bay and our plan is to:

- build a new 240 m pipe from a location in Diamond Bay Reserve to Eastern Reserve, Dover Heights. Trenchless technology will be used to insert this pipe underground
- build a new pumping station at Eastern Reserve
- build a new pipe along Oceanview Avenue to connect to the existing system at Old South Head Road. This will be laid just below the surface by digging trenches along the roadway.

Generally speaking, our work sites will be located at the new pumping station sites, at locations where our new pipes start and end, and where they connect into the existing Sydney Water system.



Construction work at Eastern Reserve, Diamond Bay Reserve and Oceanview Avenue.

Working with the community to develop local solutions



We've listened and we understand how important public spaces are to your community. That is why almost all your new wastewater system will be located below ground. For safety reasons, some things will need to be above ground, such as valves or electrical kiosks.

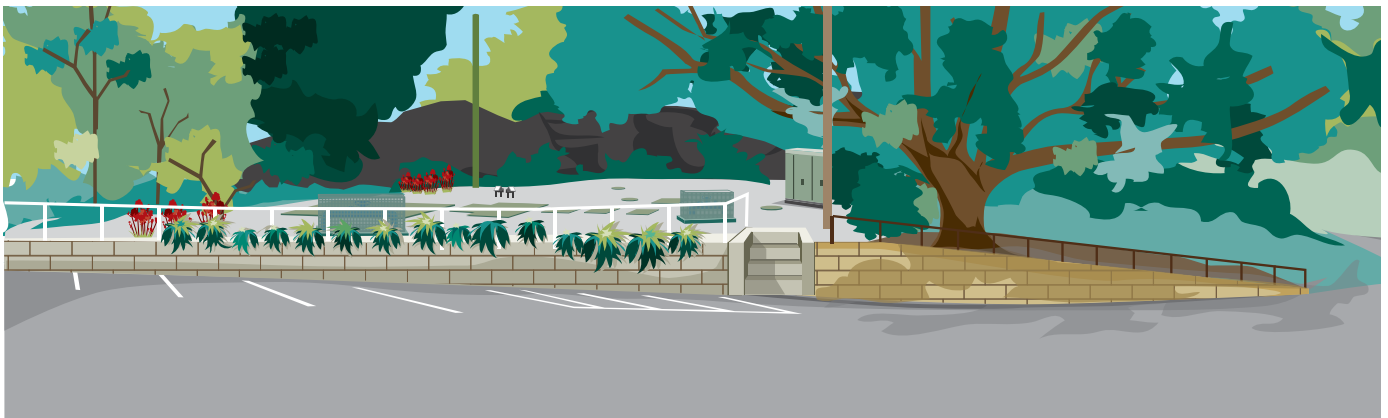
In the next phase of this project – the detailed construction design – we'll be working with the local community to look at ways we can use design to blend these elements as much as possible with the existing environment and minimise construction impacts. We want to work with you to finalise the design – so please let us know what you think.

Parsley Bay

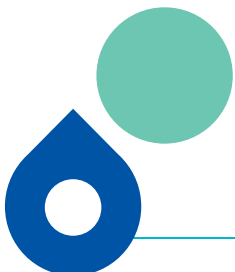
At Parsley Bay, the pumping station will be built on the site of the existing toilet and shower block. In consultation with Woollahra Municipal Council, we will build a new and improved toilet and shower block at another location. And while we will try to reduce our construction footprint as much as possible, we do expect significant restrictions to public access as we build in Parsley Bay.



We will build a new, improved toilet block at Parsley Bay before we remove the old one to put in our pumping station.



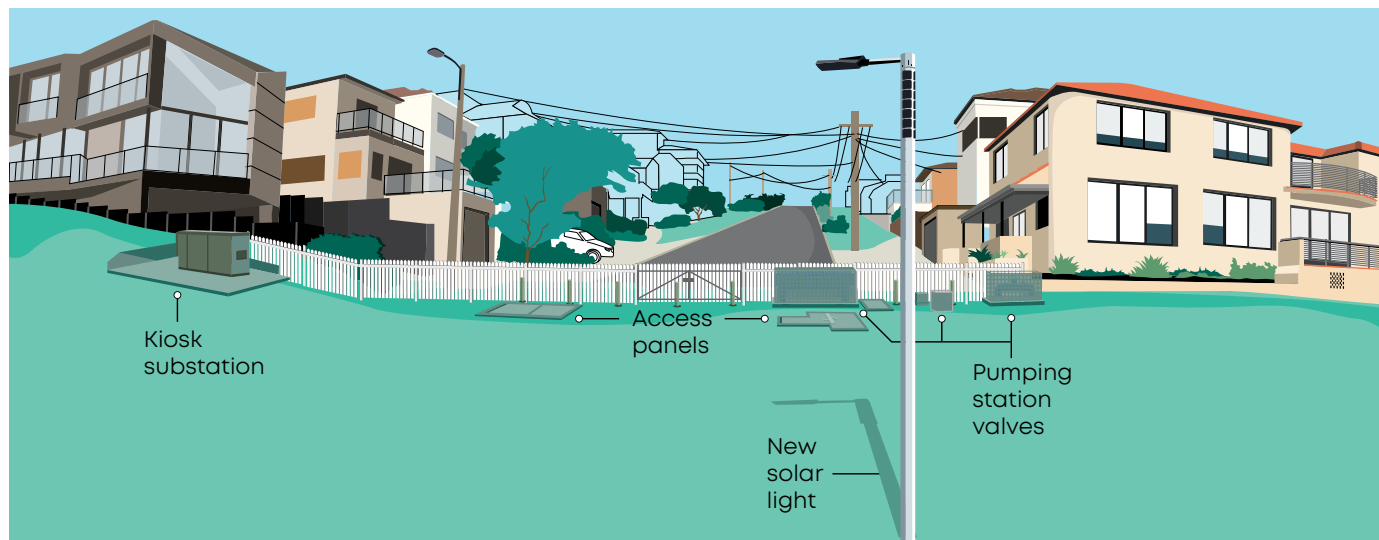
We will place most of the pumping station below ground leaving an electrical kiosk, access panels, valves and a ventilation shaft on the surface.



Eastern Reserve

The Eastern Reserve pumping station will be built in the area close to the white picket fence. We'll need to remove the overhead powerline to get to the work area, but instead of replacing it, we'll install a solar light in its place and permanently remove the overhead wires. The white picket fence, which we've heard is a much-loved local icon, will be reinstated after our work is finished.

Our work will result in the temporary closure of the public boardwalk between Craig Avenue and Kimberley Street. An alternative route by-passing this area will be provided. However, when our work at Diamond Bay is finished, we will contribute to Waverley Council's improvement plans to restore and improve the beautiful boardwalk at Diamond Bay Reserve.



We will place most of the pumping station below ground leaving an electrical kiosk, solar light, access panels and valves on the surface.

Find out more

Meet the team

With physical distancing in place, we have opted to host three virtual community information sessions. If you have some questions and would like to speak to the project team, please join one of our Zoom sessions.

- Tuesday 16 June, 5.30pm to 7pm
- Thursday 18 June, 5.30pm to 7pm
- Wednesday 24 June, 5.30pm to 7pm

To register, go to
<https://refreshvdb-informationsession.eventbrite.com>

Make a submission

The REF is on public exhibition until **Sunday 28 June**
To send us your submission:

- email it to
vaoclusediamondbay@sydneywater.com.au
- post it to
Refresh Vacluse and Diamond Bay
PO Box 399
Parramatta NSW 2124
- fax it to **1300 362 092** (yes – we still have fax!)

Get in touch

If you would like more information about the project:

Call – 1800 645 466

Email – vaoclusediamondbay@sydneywater.com.au

View the REF – www.sydneywatertalk.com.au



Scan this barcode with your phone camera or use a QR reader to open the app. You can also download the App by visiting
<https://refreshvdb.shareableapps.com>

Spread the word

When you're in the app, feel free to share it with your friends, family or neighbours by selecting **"spread the word"** from the menu on the left-hand side.

