

29 November 2024

Upcoming construction activities and traffic impacts on Parsley Road, Vaucluse and surrounding streets

Sydney Water and its delivery partner Abergeldie Complex Infrastructure (ACI) are constructing a new pump station at Parsley Bay. The pump station and supporting infrastructure will redirect untreated wastewater from one of the last remaining ocean outfalls and transfer it to the Bondi treatment plant via pipelines. This project will improve the coastal water quality and help protect the health of marine ecology by removing untreated wastewater from the ocean.

As part of this work, we will need to deliver and set-up the underground drilling equipment at Parsley Bay. This will allow us to start the construction of the transfer pipeline from Parsley Bay car park to Carlisle Street, Rose Bay.

From **Monday 6 January 2025 to Friday 31 January 2025**, we will be delivering the underground drilling equipment to our construction site at Parsley Bay. The project team anticipates that we will start the construction of the pipe installation in late January 2025.

What is underground drilling

Underground drilling involves the installation of pipes using an underground drilling machine without the need to dig open-cut trenches to lay the pipes. We will need to dig a pit in the road at both ends of the underground pipe alignment to launch the drilling machine and eventually remove it. We will be installing a 35cm wide pipe from the Parsley Bay carpark up to Carlisle Street in Rose Bay.

What's happening in the next few weeks

Site mobilisation and the delivery of equipment

To prepare for the underground drilling, there will be multiple oversized heavy vehicle deliveries to Parsley Bay via Hopetoun Avenue, Fitzwilliam Road, Parsley Road and Horler Avenue. Traffic management will be in place on Parsley Road and Horler Avenue to safely guide residents and road users during this time.

Temporary removal of parking on Parsley Road

The delivery route will remain open to traffic, however some parking on Fitzwilliam Road (approximately 4 spaces) and the eastern side of Parsley Road (approximately 20 spaces) **will be temporarily removed for up to 7 days over a period of 4 weeks**. This will provide safe access for delivery vehicles and to maintain traffic flow during the unloading process. The equipment will be unloaded on Parsley Road before being transported down Horler Avenue. Areas of 'no parking' will be clearly delineated with traffic barriers and signs advising of applicable dates. We will release parking once the deliveries are complete.

A map is provided overleaf which shows the area where parking will be removed and the delivery route. Pedestrian access to Parsley Bay Reserve will be maintained via Horler Avenue.

Equipment

The equipment and machinery to be delivered may include:

- excavators
- site containers
- vacuum truck
- high pressure pumps
- drill rig, cab and pipes.

To minimise impacts we will

- where we can for safety, schedule deliveries outside of peak traffic hours
- ensure all heavy vehicles use the approved direct route to and from Parsley Bay
- turn off machinery when not in use
- traffic control and management on Parsley Road and Horler Avenue

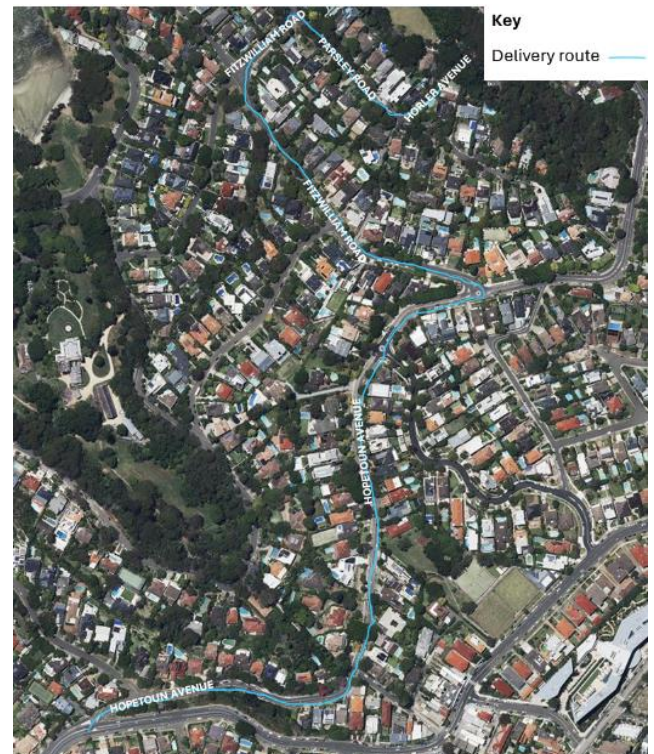
Our work hours

Our work hours are **Monday to Friday from 7 am to 6 pm** and on **Saturdays from 8 am to 1 pm**. If we need to work outside these hours, we will notify residents in advance.

Christmas shutdown period

There will be no construction activities from **Saturday 21 December 2024 to Sunday 5 January 2025**. Work will recommence on **Monday 6 January 2025**.

Temporary removal of parking and delivery route



Contact

We will provide regular updates to the community as the work progresses. If you have any questions, please contact our community engagement team on **1800 641 349** or email us on vaoclusediamondbay@sydneywater.com.au.



Scan the QR code for the project website or subscribe for email updates.