

17 July 2025

Drilling equipment removal from Parsley Bay car park | Upcoming traffic impacts on Parsley Road, Vaucluse and surrounding streets

Below the cliffs of Vaucluse and Diamond Bay, wastewater flows directly into the ocean untreated. It's time for change and we're continuing to work to ensure this iconic area of Sydney gets the clean, blue backyard it deserves. Under the Refresh Vaucluse Diamond Bay (RVDB) project, we are building new infrastructure to divert the flows from the last three remaining ocean outfalls in Sydney to the Bondi Water Resource Recovery Facility (WRRF).

The project has reached a significant milestone with successfully installing a new 1.8km underground wastewater pipeline from the Parsley Bay car park to Carlisle Street, Rose Bay. We are now preparing to remove the underground drilling equipment from Parsley Bay as we finish this phase of construction work.

From **Thursday 24 July 2025 to Thursday 14 August 2025**, we will be removing the underground drilling equipment from our construction site at Parsley Bay.

What's happening in the next few weeks

Removal of equipment

There will be oversized heavy vehicle movements to Parsley Bay via Hopetoun Avenue, Fitzwilliam Road, Parsley Road and Horler Avenue during this period. Traffic management will be in place on Parsley Road and Horler Avenue to safely guide residents and road users.

Temporary removal of parking on Parsley Road

The delivery route will remain open to traffic, however some parking on Fitzwilliam Road (approximately 4 spaces), the eastern side of Parsley Road (approximately 20 spaces) and all the western side of Parsley Road from Fitzwilliam Road to Horler Avenue **will be temporarily removed for up to 7 days over a period of 3 weeks**. This will provide safe access for delivery vehicles and to maintain traffic flow during the loading process. The equipment will be transported up Horler Avenue before being loaded on Parsley Road. Areas of 'no parking' will be clearly delineated with traffic barriers and signs advising of applicable dates. We will release parking once the deliveries are complete.

A map is provided overleaf which shows the area where parking will be removed and the delivery route.

Pedestrian access to Parsley Bay Reserve will be maintained via Horler Avenue.

We understand the ongoing construction can be challenging for residents and we sincerely appreciate your patience during this time.

Equipment

The equipment and machinery being removed may include:

- excavators
- site containers
- vacuum truck
- high pressure pumps
- drill rig, cab and pipes.

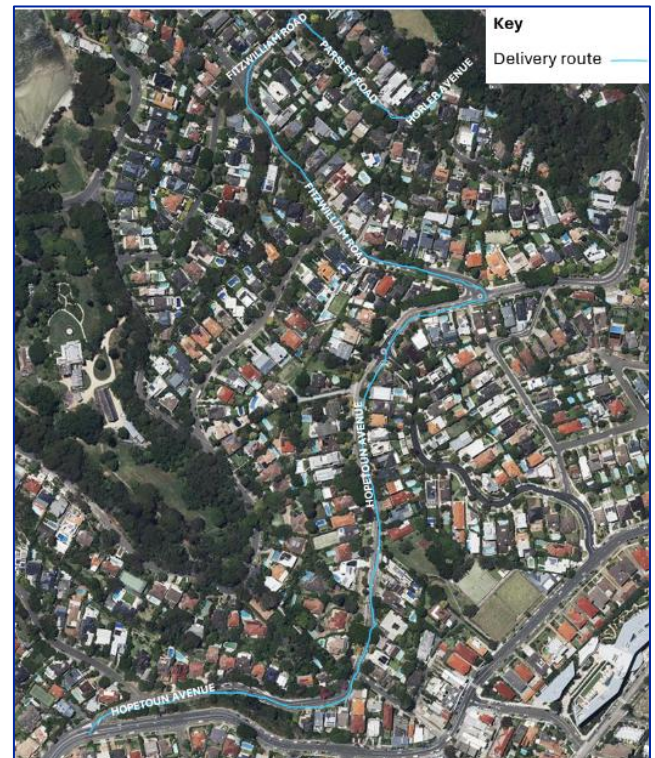
To minimise impacts we will

- where we can for safety, schedule deliveries outside of peak traffic hours
- ensure all heavy vehicles use the approved direct route to and from Parsley Bay
- turn off machinery when not in use
- traffic control and management on Parsley Road and Horler Avenue.

Our work hours

Our work hours are **Monday to Friday from 7 am to 6 pm** and on **Saturdays from 8 am to 1 pm**. If we need to work outside these hours, we will notify residents in advance.

Temporary removal of parking and delivery route



Contact

We will provide regular updates to the community as the work progresses. If you have any questions, please contact our community engagement team on **1800 641 349** or email us on vauclosediamondbay@sydneywater.com.au.



Scan the QR code for the project website or subscribe for email updates.