

Changed traffic conditions and safe speeds around our construction sites

During construction work on Carlisle Street in Rose Bay, it is important to follow the direction of traffic controllers and speed limits in the area. For the safety of pedestrians, motorists, the community, and our workers, a 40km per hour speed limit is in place. This reduction in the speed limit improves driver awareness of changed traffic conditions.



Reducing the speed limit around construction zones improves safety for everyone.

Making a hands-on connection



In September, students from The Scots College Early Learning Centre painted their handprints on a section of wastewater pipe that will run past their preschool along Carlisle Street in Rose Bay.

The activity gave the children a fun and memorable way to connect with the infrastructure Sydney Water is building in their neighbourhood. It was a hit with both students and staff.

The Community Engagement team is working closely with the preschool to keep them informed about construction impacts, including traffic changes and noise.

In addition to the handprint activity, the children heard about where the pipe was going and how the work will make the ocean healthier. To keep the conversation going at home about what they learnt, the project team gave the children Sydney Water bags with toothbrushes, chatterboxes and other goodies to take home.

Christmas shutdown period

There will be no construction activities from Saturday 20 December 2025 to Sunday 4 January 2026. We'll be back on site to recommence work on Monday 5 January 2026.

Wishing you a safe and enjoyable holiday season. We look forward to continuing to work together in the new year.

Get in touch

Our community and stakeholder engagement team can be contacted via

Call 1800 641 349

Email vauclosediamondbay@sydneywater.com.au



Scan QR code for our project website, where you can subscribe to email updates

Sydney
WATER SW 137 12/25

Refresh Vaucluse and Diamond Bay



Project overview

Beneath the cliffs of Vaucluse and Diamond Bay, Sydney Water is taking steps to improve how we care for our waterways. We're committed to protecting marine life and delivering a lasting solution that enhances the health of our coastal environment for generations to come.

As part of the Refresh Vaucluse Diamond Bay project, we're building new infrastructure to divert untreated wastewater flows to the Bondi Water Resource Recovery Facility (WRRF).

This work includes:

- two new pump stations, located at Parsley Bay and Eastern reserve
- 3km of new wastewater pipelines, maintenance shafts and vent shafts
- upgrading existing infrastructure such as vents shafts and maintenance holes

Caretaker's Cottage

We're thrilled to announce that the retrofitting of new amenities on the ground floor of the Caretaker's Cottage is now complete. Visitors can enjoy state-of-the-art toilet and shower facilities, along with a family changing room designed for comfort and convenience.

Plus, the kiosk has returned to its home inside the Caretaker's Cottage - perfect for grabbing a snack during your visit!



Water IS OUR LIFE

Sydney
WATER

Construction updates

Parsley Bay

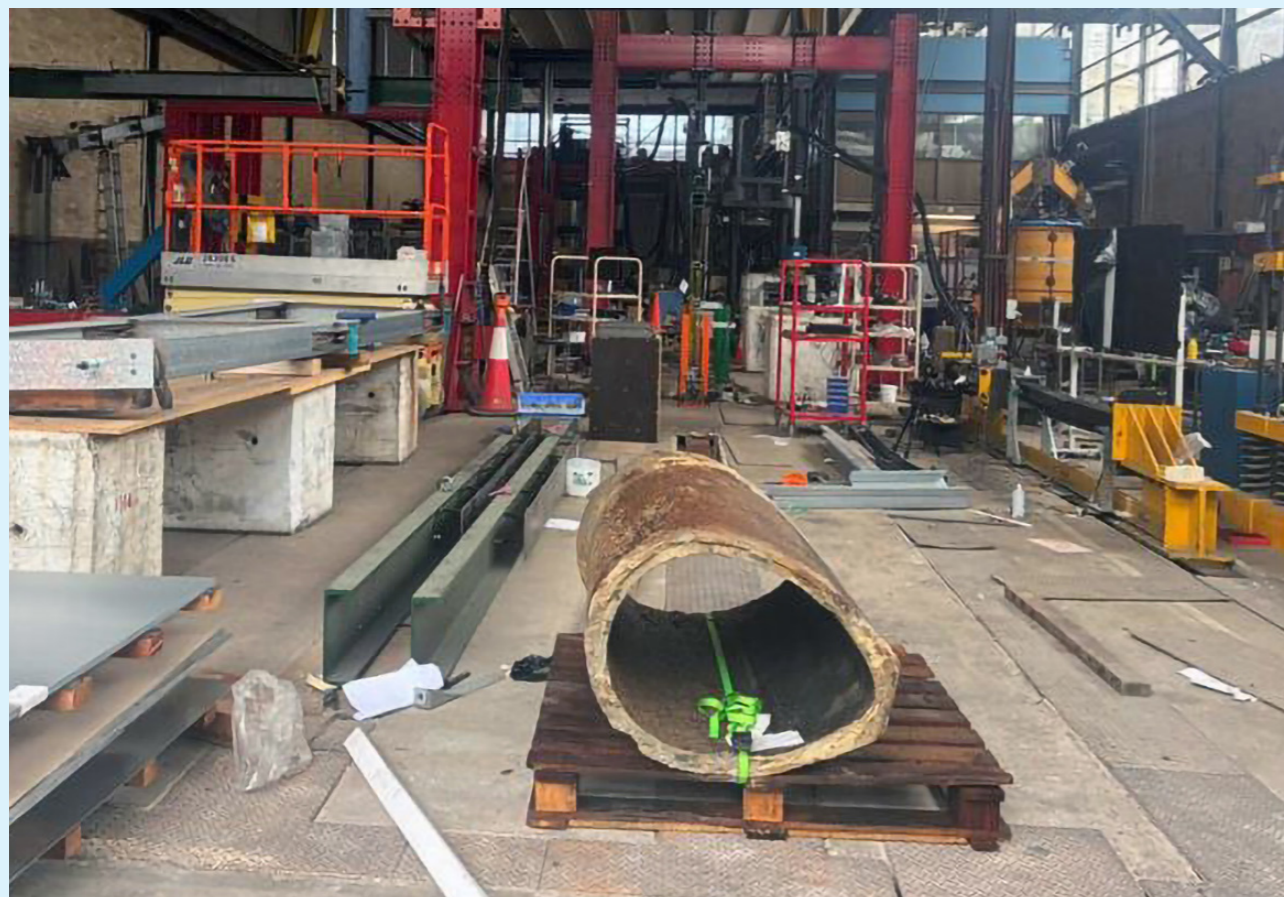
At the end of September this year, work commenced on the excavation of the new pump station and storage tank in Parsley Bay. To supply power to the pump station, high voltage power cables were installed in Parsley Road, Fitzwilliam Road, and Horler Avenue. To safely facilitate this work, parking was removed on Parsley Road and we thank local residents and visitors for following the traffic management that was in place guiding pedestrians and motorists around the work area.

Rose Bay

The project team are working hard on Carlisle Street and have completed the excavation of 2 maintenance holes and set up of a new compound and work area at the corner of Dover Road and Carlisle Street. Key traffic changes have been implemented, including the relocation of the school drop-off and pick-up zone and 24/7 one way eastbound traffic only on Carlisle Street. We understand that this work may impact the local community and thank you for your patience and understanding.

Preserving a 100 year old pipe

At Parsley Bay, the team took exceptional care when working around the live 100 year old oviform (egg-shaped) Sydney Water sewer pipe, hand built in the early 1900's beneath local sandstone cliffs. After carefully exposing and excavating the pipe, two sections were transported to the University of Sydney's School of Engineering laboratory for further study and analysis of the historic construction techniques.



100 year old oviform at the University of Sydney's School of Engineering laboratory.

What's coming up

In Parsley Bay

In early January, we will continue road trenching and utility service installation on Horler Avenue, Parsley Road and Fitzwilliam Road. During this time, pedestrian access to Parsley Bay Reserve will remain open via Horler Avenue, with traffic management in place to safely guide the community. Within our construction site, concrete work will commence for the construction of the new pump station.

Following this stage, the Parsley Road and Hopetoun Avenue access points to Parsley Bay Reserve will be temporarily closed to allow for excavation work within the reserve. Pedestrian access will be maintained via Horler Avenue, Fitzwilliam Road, and The Crescent.



Maintenance hole at Carlisle Street.

In Diamond Bay

We have listened to the community and incorporated their feedback into the design process for the Eastern Reserve pump station. Investigations are ongoing to inform the detailed design, which is expected to be completed by mid 2026. We are also expecting to award a construction contract in mid 2026.

In Rose Bay

In the new year, excavation of a maintenance hole will be undertaken near the corner of Carlisle Street and Dover Road. Following this we will be installing underground pipes along Carlisle Street, from Fernleigh Avenue to Dover Road. The current 24/7 one way traffic flow on Carlisle Street will remain in place with work expected to be completed in mid 2026.

Connecting with the community

Thank you to everyone who attended our community information session and BBQ at Parsley Bay Reserve in early November. We appreciate you taking the time to learn about the upcoming construction work, and we hope the information provided helped clarify the upcoming activities planned for the project. If you have any questions about construction, please contact our delivery team on 1800 641 349 or email vauclusediamondbay@sydneywater.com.au

