



March 2021

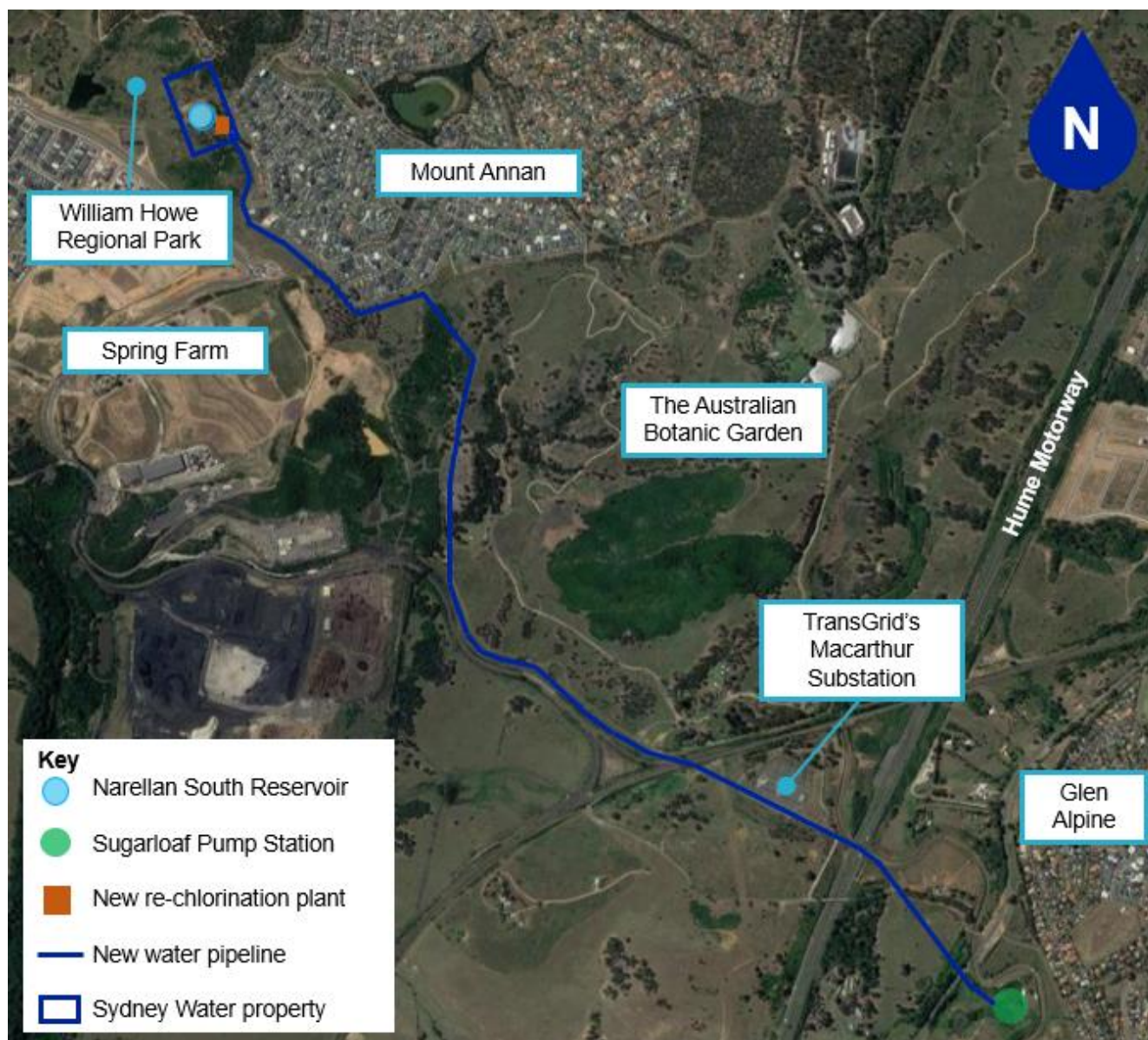
Prospect South to Macarthur Project

By 2056 Sydney is expected to grow to around eight million people, putting our existing water network beyond capacity. Sydney Water has a long-term plan to increase resilience in our network and to extend the city's water capacity and supply.

As part of the Prospect to Macarthur (ProMac) project we are building a new drinking water pipeline between the Narellan South Reservoir and Sugarloaf Pump Station in Menangle Park, and a new re-chlorination plant in Mount Annan.

The new pipeline and re-chlorination plant will allow us to move water around the network more efficiently and improve the management of water quality, ensuring our existing and future customers continue to have reliable access to clean drinking water.

Investigation work will start Monday 29 March, with the pipeline construction works commencing from late April 2021.



The ProMac works between the Narellan South Reservoir in Mount Annan and Sugarloaf Pump Station in Menangle Park.

About the new water main

4.8 kilometres of 900mm diameter water main will be constructed between Mount Annan and Menangle Park.

Crossing nine properties, the pipeline will take around 14 months to construct.

Open excavations within the construction corridor will be securely fenced for the safety of the public.

To allow for the movement of machinery as it lifts 13 metre lengths of pipeline into the trench, the fenced off construction corridor will be a minimum of 20 metres wide, with the trench itself measuring between two and four metres across.

The sections of pipe are welded together and the pipeline is pressure-tested before it is connected to the Sydney Water network, to ensure there are no leaks.



A section of water pipeline being lifted into place in Cecil Park.

About the new re-chlorination plant

A re-chlorination plant will be built next to the Narellan South Reservoir. Two small buildings will be constructed, covering an area of approximately 16 metres by 9 metres, with the buildings standing 3.5 metres high.

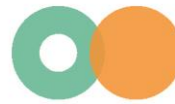
Small amounts of chlorine are added to drinking water to make it safe to drink. This is in line with Australian Standards.

This new plant will automate the dosing and monitoring of chlorine into the adjacent reservoir, which gives Sydney Water better control over water quality for its customers.

The buildings will be constructed offsite and delivered as complete units to be installed onsite.



Image of a typical Sydney Water re-chlorination plant.



The buildings will be painted green to help them blend in with their surroundings. Work on the plant will start later this year.

Once the plant is operational, Sodium Hypochlorite (commonly known as chlorine) will be delivered in a tanker truck each fortnight. Deliveries will be received Monday to Friday 7 am to 6 pm and Saturday 8 am to 1 pm.

Chlorine is odourless and a new tanker receiving area will be surrounded by a concrete bund similar to a petrol station forecourt, to safely capture any spills during unloading.

A new access road will be built between the existing site access gate and the tanker receiving area.

An operating re-chlorination plant is not noisy and would be accessed weekly by Sydney Water for deliveries, inspections and maintenance.

The facility will be securely fenced.

Monitoring of vibration from construction works

An assessment of the equipment required to construct the pipeline and re-chlorination plant has been completed and limits set for vibration to ensure that any vibration generated is below levels that could cause structural damage to a home.

Vibration will be monitored throughout works to ensure that levels are within approved limits.

As a safeguard for property owners, property condition surveys were offered to households

directly adjacent to the works between October and December 2020.

Property owners who accepted surveys have now had their survey completed.

Construction traffic and impacts

Residents will see construction traffic around Mount Annan, with truck movements primarily along:

- Liz Kernohan Drive
- Mount Annan Drive

You may also notice an increase in noise, dust and vibration during this work. Residents close to the works may choose to cover their pools when not in use.

We will monitor our work to minimise any impact on the community and our community relations team will contact you if you are directly affected.

Work hours

Our standard working hours are from 7 am to 6 pm Monday to Friday and 8 am to 1 pm Saturday.

We may need to work outside of our standard hours from time to time and you will be notified if this is the case.

Where possible, we will not work on Sundays or public holidays.

We'll keep you updated as this project progresses. Thank you for your cooperation during this essential work.

Interpreter Service 13 14 50

Arabic • Chinese • Greek • Italian • Korean • Vietnamese

إذا كنت تحتاج إلى مترجم، يرجى الاتصال بالرقم أعلاه.
如果您需要傳譯員的協助，請致電以上的號碼。

Αν χρειάζεστε διερμηνέα, τηλεφωνήστε στον παραπάνω αριθμό.

Se vi serve un interprete, telefonate al numero indicato sopra.

통역사가 필요하시면 위의 번호로 전화하십시오.

Nếu quý vị cần thông dịch viên, hãy gọi đến số trên đây.

To know more about ProMac:

Call: 1800 678 098

Email: ProMac@sydneywater.com.au

Visit: www.sydneywatertalk.com.au/ProMac