



October 2021

Prospect South to Macarthur Project

By 2056 Sydney is expected to grow to around eight million people, putting our existing water network beyond capacity. Sydney Water has a long-term plan to increase resilience in our network and to extend the city's water capacity and supply.

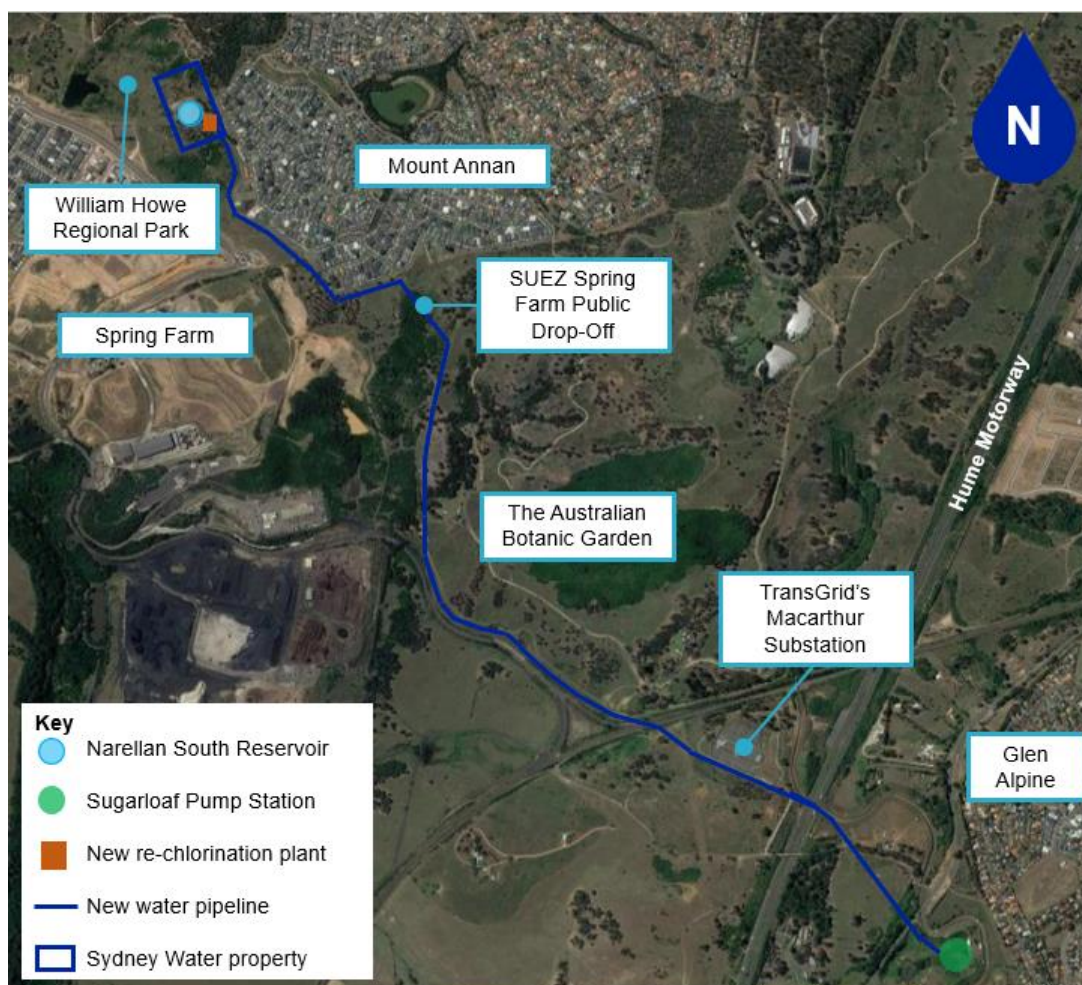
As part of the Prospect to Macarthur (ProMac) project we are replacing a reservoir in Currans Hill, building a new drinking water pipeline between the Narellan South Reservoir and Sugarloaf Pump Station in Menangle Park and installing a new re-chlorination plant in Mount Annan.

The new reservoir, pipeline and re-chlorination plant will allow us to move water around the network more efficiently and improve the

management of water quality, ensuring our existing and future customers continue to have reliable access to clean drinking water.

ProMac construction is currently happening in William Howe Regional Park, The Australian Botanic Garden in Mount Annan and in Menangle Park. All ProMac construction is expected to be completed in this area by June 2022, depending on the weather, COVID-19 restrictions and other unforeseen delays.

We are aware that residents are spending more time at home currently and may be exposed to more of the disruption from our works than usual. We thank the community for their ongoing support as these works progress.



The ProMac works between the Narellan South Reservoir in Mount Annan and Sugarloaf Pump Station in Menangle Park.

Reservoir upgrade in Currans Hill

As part of the ProMac project, Sydney Water will be upgrading the reservoir inside our Currans Hill facility, off Manooka Road.

The reservoir requires significant repairs so that it can reliably supply water to the growing local community for many decades to come. A cost-benefit analysis has concluded it would be a better outcome to dismantle the existing reservoir and build a new facility.

Demolition will start before Christmas and the new reservoir is expected to be operational by November 2022.

The new reservoir will be 20 metres in diameter and stand 20 metres tall, mirroring the profile of the existing tank. It will hold 6 megalitres of drinking water, which is equivalent to more than two Olympic swimming pools worth of water.

The steel reservoir will be painted green to help it blend into its surroundings.

The heritage structure 'Upper Canal' runs along the eastern side of the Currans Hill Reservoir facility. The Upper Canal was built in the 1880s and it still transferring water to Sydney from the four Upper Nepean dams – Cataract, Cordeaux, Avon and Nepean. Construction will be closely monitored to ensure this critical infrastructure is not damaged by the construction activity.

The community team will be knocking on the doors of local residents in the coming weeks to explain the work in detail and give residents the opportunity to ask questions about the project.

Residents can also speak to the community team by calling our project hotline (1800 678 098) or sending an email to ProMac@sydneywater.com.au.



Location of the Sydney Water Currans Hill Reservoir facility, off Manooka Road.



October 2021

Pipeline construction update

Due to the COVID-19 construction pause implemented by the NSW Government back in July, our pipeline works have been slightly delayed. Work will now be completed by **mid-January 2022**.

To date, our contractor Vaughan Civil has installed around 50 per cent of the pipeline, including:

- 1.2 kilometres of single and 500 metres of twin 813 mm steel pipeline through the SUEZ Spring Farm Public Drop-Off facility and William Howe Regional Park
- 350 metres of twin 813 mm steel pipeline in The Australian Botanic Garden in Mount Annan
- 30 metres of trenchless pipe through the TransGrid Macarthur Substation in Menangle Park
- Air valves and scour valves along pipeline's alignment.

Testing of the pipeline and restoration of affected areas along the construction corridor between Mount Annan and Menangle Park is planned to be completed by the end of **February 2022**.



Pipes and machinery being unloaded at the Vaughan Civil SUEZ compound.



Twin pipeline installation inside The Australian Botanic Garden.



Pipeline installation crossing high pressure gas mains using micro-tunnelling and pipe-jacking.

Narellan South re-chlorination plant update

Preliminary site works for the new re-chlorination plant at the Narellan South Reservoir (inside William Howe Regional Park) is expected to start before Christmas.

Construction will then start in earnest in January 2022 with earthworks expected to take around two months to complete. The plant buildings are due to be delivered in February.

The team will then need another three months to complete remaining civil works and commissioning of the facility, before it is operational.

What is a re-chlorination plant?

Small amounts of chlorine are added to drinking water to make it safe to drink. This is in line with Australian Standards.

The new plant will automate the monitoring and dosing of chlorine into the adjacent reservoir, which gives Sydney Water better control over water quality for its customers.

Will I notice the plant once its operational?

The buildings will be painted green to help them blend in with their surroundings.

Once the plant is operational, Sodium Hypochlorite (commonly known as chlorine) will be delivered in a tanker truck each fortnight. Deliveries will be received Monday to Friday 7 am to 6 pm and Saturday 8 am to 1 pm.

Chlorine is odourless and a new tanker receiving area will be surrounded by a concrete bund, similar to a petrol station forecourt, to safely capture any spills during unloading.

An operating re-chlorination plant is not noisy and would be accessed weekly by Sydney Water for inspections and maintenance.

The facility will be securely fenced.



An image of a typical Sydney Water re-chlorination plant.

Construction traffic and impacts

Residents will continue to see construction traffic around Mount Annan and Menangle Park, with truck movements primarily along:

- Liz Kernohan Drive
- Mount Annan Drive
- Menangle Road.

The Currans Hills reservoir team is considering the best route for trucks and cranes to access the site in order to minimise the impact on the local community as much as possible. Once the traffic plan is confirmed, we will share this information with residents.

While we are working in your area, you may also notice an increase in noise, dust and vibration. We will monitor our work to minimise any impact on residents and our community team will contact you if you will be directly affected by the work.



October 2021

Work hours

Our standard working hours are from 7 am to 6 pm
Monday to Friday and 8 am to 1 pm Saturday.

We may need to work outside of our standard
hours from time to time and you will be notified if
this is the case.

Where possible, we will not work on Sundays or
public holidays.

**We'll keep you updated as this project
progresses. Thank you for your cooperation
during this essential work.**

Interpreter Service 13 14 50

Arabic • Chinese • Greek • Italian • Korean • Vietnamese

إذا كنت تحتاج إلى مترجم، يرجى الاتصال بالرقم أعلاه.

如果您需要傳譯員的協助，請致電以上的號碼。

Αν χρειάζεστε διερμηνέα, τηλεφωνήστε στον παραπάνω αριθμό.

Se vi serve un interprete, telefonate al numero indicato sopra.

통역사가 필요하시면 위의 번호로 전화하십시오.

Nếu quý vị cần thông dịch viên, hãy gọi đến số trên đây.

To know more about ProMac:

Call: 1800 678 098

Email: ProMac@sydneywater.com.au

Visit: www.sydneywatertalk.com.au/ProMac