



February 2021

## Prospect South to Macarthur

### Kemps Creek pipeline

By 2056 Sydney is expected to grow to around eight million people, putting our existing water network beyond capacity. Sydney Water has a long-term plan to increase resilience in our network and to extend the city's water capacity and supply.

As part of the Prospect to Macarthur (ProMac) project we are building a new drinking water pipeline from Range Road, Cecil Park to Western Road, Kemps Creek (see below map), to provide drinking water services for 84,000 new homes in the South West Growth Area and Western Sydney Aerotropolis Growth Area – even during the hottest and driest days.

ProMac will help Sydney Water deliver on its vision of creating a better life with world-class water services.

### Work continuing in Kemps Creek

Our contractor, Killard Infrastructure has started construction of the pipeline on Cross Street and will continue west towards Western Road.

This work will involve:

- clearing trees and removing vegetation within 20 metres of our work area
- using earthmoving machinery to complete construction works
- installing pipes and valves
- restoring the impacted area.

We will keep you informed as works progress.



Progress photos of work on Cross Street



Interpreter Service 13 14 50

Arabic • Chinese • Greek • Italian • Korean • Vietnamese

إذا كنت تحتاج إلى مترجم، يرجى الاتصال بالرقم أعلاه.  
如果您需要傳譯員的協助，請致電以上的號碼。

Αν χρειάζεστε διερμηνέα, τηλεφωνήστε στον παραπάνω αριθμό.

Se vi serve un interprete, telefonate al numero indicato sopra.

통역사가 필요하시면 위의 번호로 전화하십시오.

Nếu quý vị cần thông dịch viên, hãy gọi đến số trên đây.

## Construction traffic and impacts

Residents will continue to see construction traffic around Kemps Creek and changed traffic conditions.

Cross Street will be reduced to one lane of traffic in some areas, with a contra-flow traffic arrangement in place. Between **Monday 8 February** and **Friday 12 February**, residents will experience delays for one day while the pipe is laid across the intersection of Cross Street and Pratten Street.

Residents can expect to see truck movements along:

- Cross Street
- Devonshire Road
- Elizabeth Drive
- Range Road

Traffic control and signage will be in place to guide pedestrians and vehicles safely around our work sites.

You may notice an increase in noise, dust and vibration during this work. Residents close to the

works may choose to cover their pools when not in use. We will monitor our work to minimise any impact on the community.

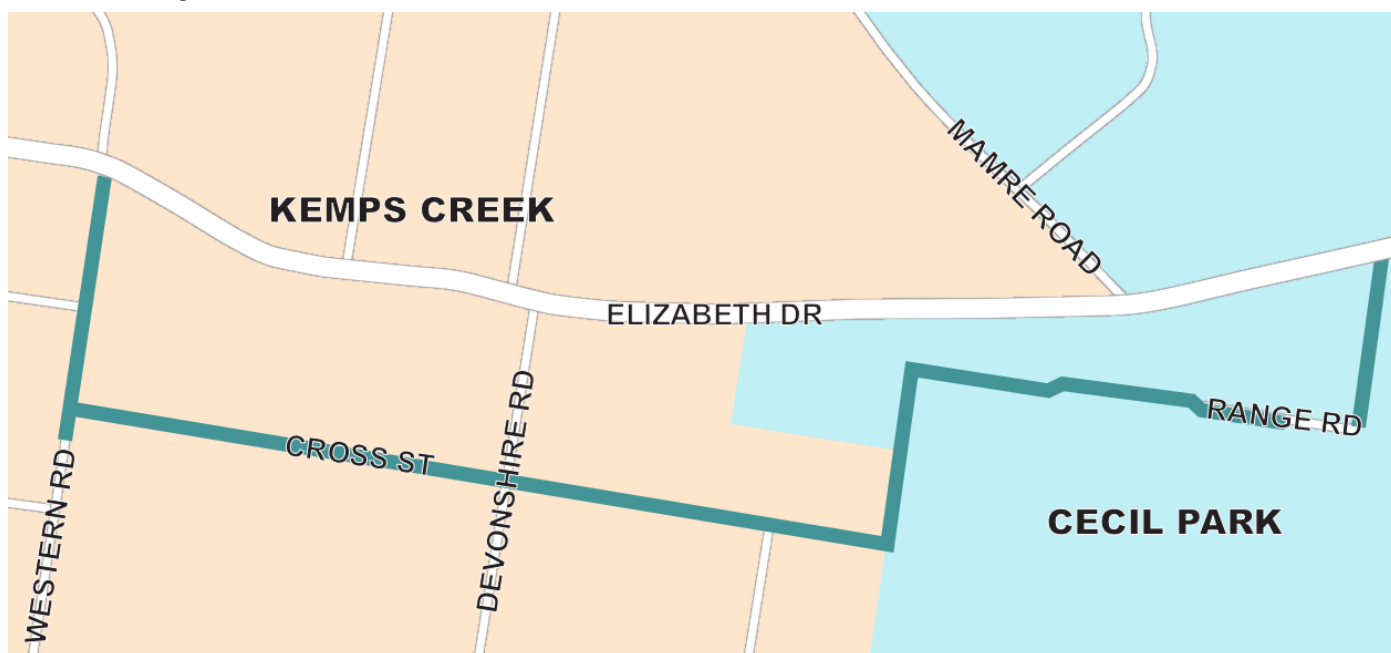
Parking in the surrounds may be limited. If we cannot access the work area, it can cause delays and prolong the work.

Our community relations team will contact you if you are directly affected by our work.

## Timing of works

Construction of the new drinking water pipeline will be carried out in the following areas during these periods, weather permitting:

- Range Road to Cross Street – February to July
- Range Road near Elizabeth Drive – July to September
- Cross Street to Western Road – January to June
- Western Road near Elizabeth Drive – May to August



Pipeline route through Kemps Creek



## Work hours

Standard working hours will be 7 am to 6 pm Monday to Friday and 8 am to 1 pm Saturday.

We will not work on Sundays or public holidays, where possible.

To minimise impact to Kemps Creek Public School and Christadelphian Heritage College we may need to work outside of these standard construction hours. You will be notified if this is the case.

We'll keep you updated as this project progresses. Thank you for your cooperation during this essential work.

## Pipeline facts

We will install 4.5 km of pipeline from Range Road, Cecil Park to Western Road, Kemps Creek.

The size of the pipe will range between 500mm and 1200mm in diameter.

The width of our trench will be between 2m and 10m wide and our construction corridor will be up to 30m wide to allow for the movement of machinery.

## Phytophthora within Kemps Creek Nature Reserve

Kemps Creeks Nature Reserve contains a group of soil-borne fungi called phytophthora which infects a large range of plant species and can be easily spread. Phytophthora is found in the top 1m of topsoil.

To contain phytophthora within our site we will:

- Keep topsoil stockpiles separate from other material
- Contain all excavated material onsite and reuse this material to backfill our trench

- Install washdown bays at the entry and exit points to this construction site
- Leave any trees that are cut down on the ground for wildlife habitat



Construction of a new water pipeline at the Sydney International Shooting Centre in Cecil Park

## To know more about ProMac:

**Call:** 1800 678 098

**Email:** [ProMac@sydneywater.com.au](mailto:ProMac@sydneywater.com.au)

**Visit:** [www.sydneywatertalk.com.au/ProMac](http://www.sydneywatertalk.com.au/ProMac)



## Western Sydney Parklands

From **Thursday 11 February**, the southern pedestrian bridge over the M7 into Western Sydney Parklands will be closed.

This closure is necessary to prevent any interference with the construction sites within the park and ensure the safety of the community.

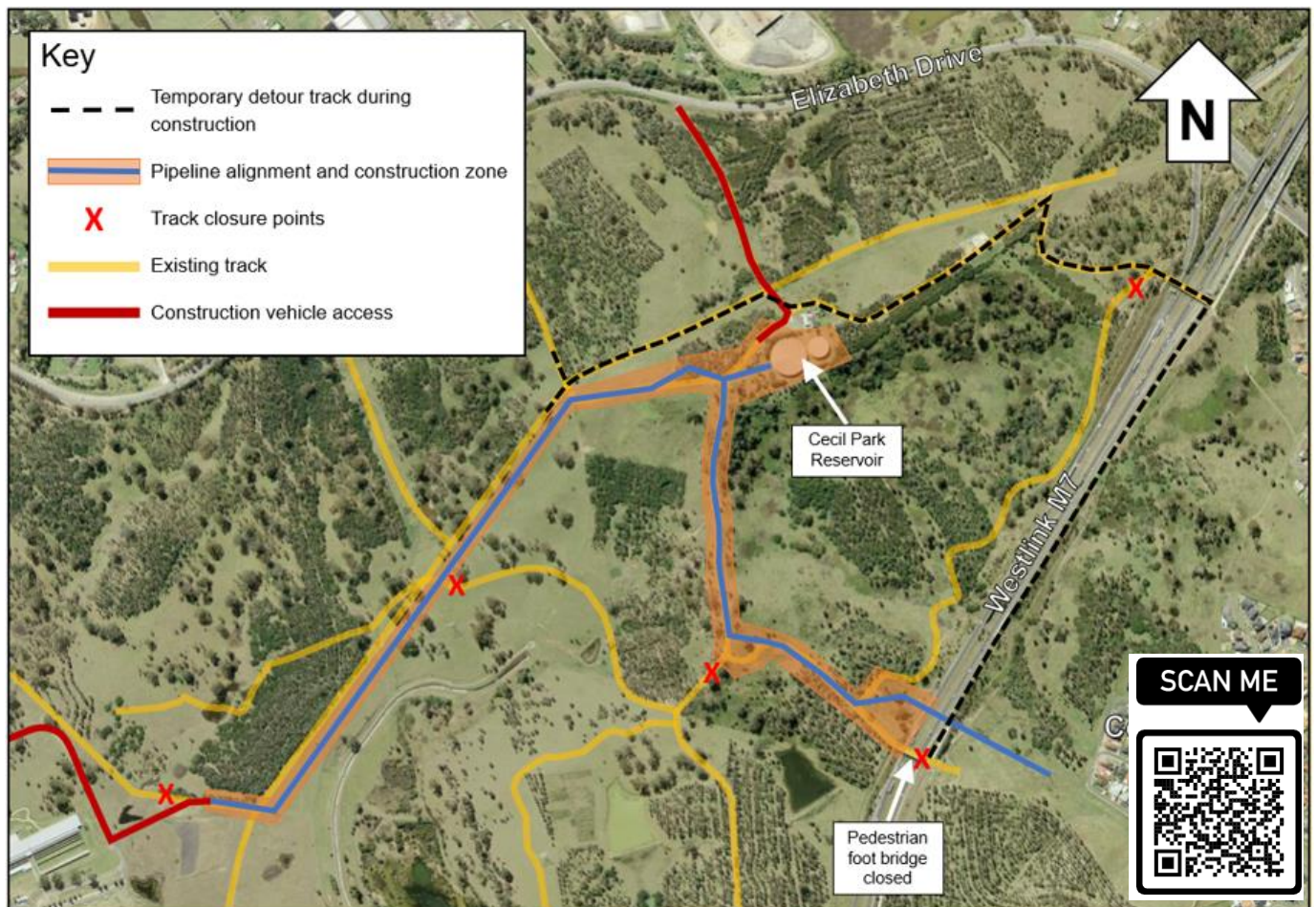
Temporary diversions will be in place until November 2021 and wayfinding signage installed at points to direct visitors to alternate routes.

The map below sets out the diversion strategy.

For further information, visit the Parkland's website, scan the QR code below or contact the ProMac team.



Image credit: Western Sydney Parklands Trust, replanting work



Western Sydney Parklands temporary pathway diversions