



February 2021

## Prospect South to Macarthur Update

By 2056 Sydney is expected to grow to around eight million people, putting our existing water network beyond capacity. Sydney Water has a long-term plan to increase resilience in our network and to extend the city's water capacity and supply.

As part of the Prospect to Macarthur (ProMac) project we are building a new drinking water pipeline, reservoir and pumping station in Cecil Hills.

### Pipeline update

In January, work began to build a new pipeline in Prince Close adjacent to Cecil Hills Public School.

We have installed approximately 200 metres of new water pipe in this area during the school holidays. Work to install the remainder of the pipeline in Prince Close will resume in the coming months.

Construction activity has moved into Pye Hill Reserve now that school has started for the year. We will also be working to install new pipe in the reserve parallel to Anjou and Clementina Circuits

To support our work within Cecil Hills, we will establish two temporary work compounds in the reserve adjacent to Anjou Circuit, one in Benedict Close and one off Lancaster Avenue (refer to the map on page 3 for locations).

### Liverpool Reservoir update

Installation of new pipeline connections inside the Reservoir site have been completed.

We will soon begin installing the roof on the new reservoir.

From the second week of February, we will be starting to prepare the surface of the new reservoir for painting. For the external walls, this will involve using a dry ice blaster to remove rust and welding residue to leave a smooth surface for painting.

Using this new technology will produce less dust and noise. The interior walls will be prepared using the sand/grit blasting method once the tank roof has been installed.

The blasting will take up to six weeks to complete, weather permitting.

To further reduce the impact of any dust generated by the blasting, we will

- monitor dust
- install coverings while work is in progress on the upper sections of the tank
- not work in windy conditions
- complete works inside the tank under negative air pressure to stop dust from exiting the tank.

Unfortunately, these activities are noisy, and we apologise for the inconvenience while we complete this task.

Painting of the tank will follow the blasting and will take about six weeks to complete.

Also starting in the second week of February will be the installation of the footings for the temporary construction noise wall behind some homes in Stein Place.

Once the temporary noise wall is completed, earthmoving works will begin to prepare the area for construction of the new pumping station.

**Thank you for your patience as we continue this essential work. We will keep you updated on our progress.**

## Changes to access at Western Sydney Parklands

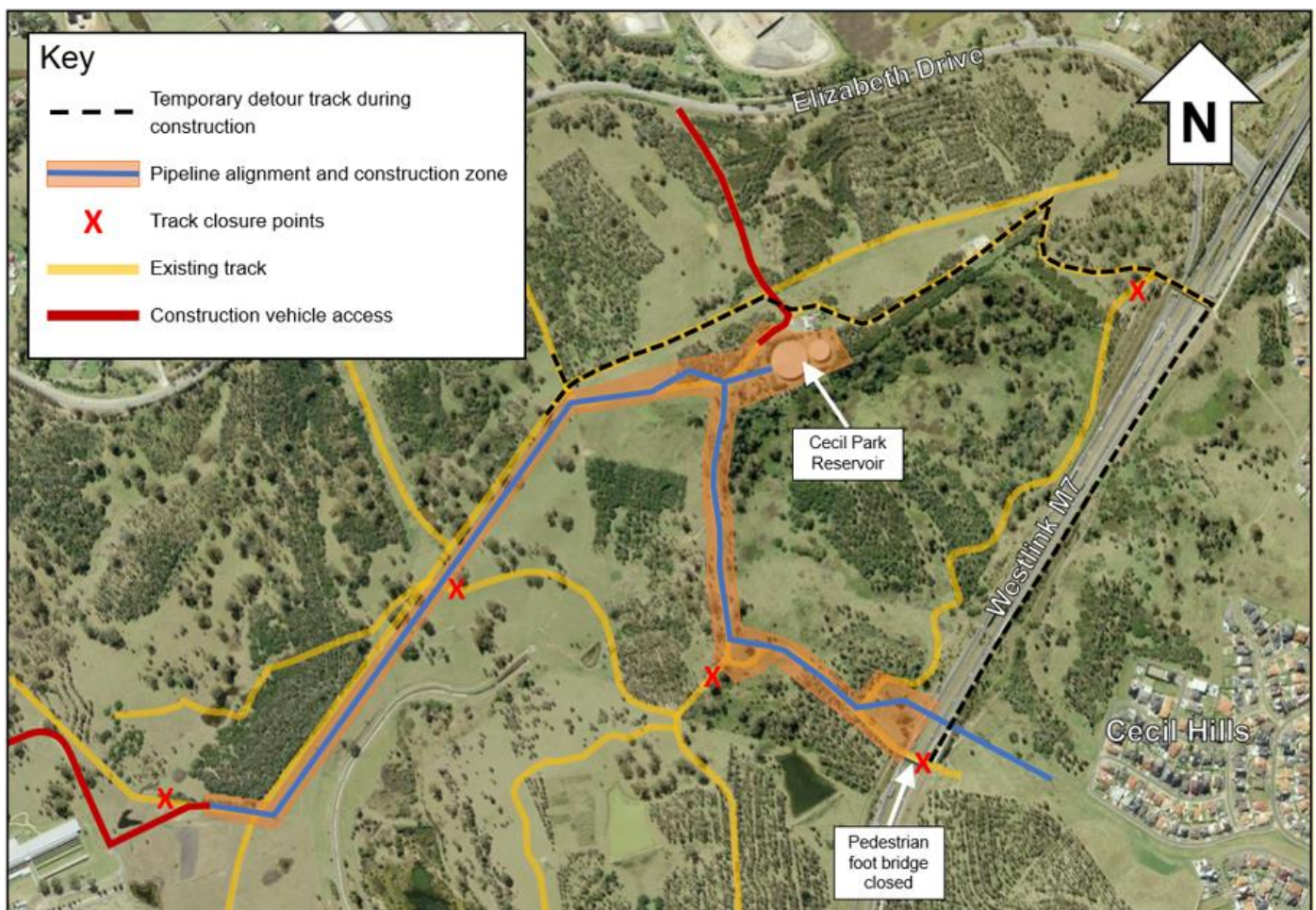
From **Thursday 11 February**, the southern pedestrian bridge over the M7 into Western Sydney Parklands will be closed.

This closure is necessary to prevent any interference with the construction sites within the park and ensure the safety of the community.

Temporary diversions will be in place until November 2021 and wayfinding signage installed at points to direct visitors to alternate routes.

The map below sets out the diversion strategy.

For further information, visit the Parkland's website, scan the QR code below or contact the ProMac team.



Western Sydney Parklands temporary pathway diversions



## Construction traffic and impacts

Residents will continue to see construction traffic around Cecil Hills and changed traffic conditions.

Traffic control and signage will be in place to guide pedestrians and vehicles safely around our work sites.

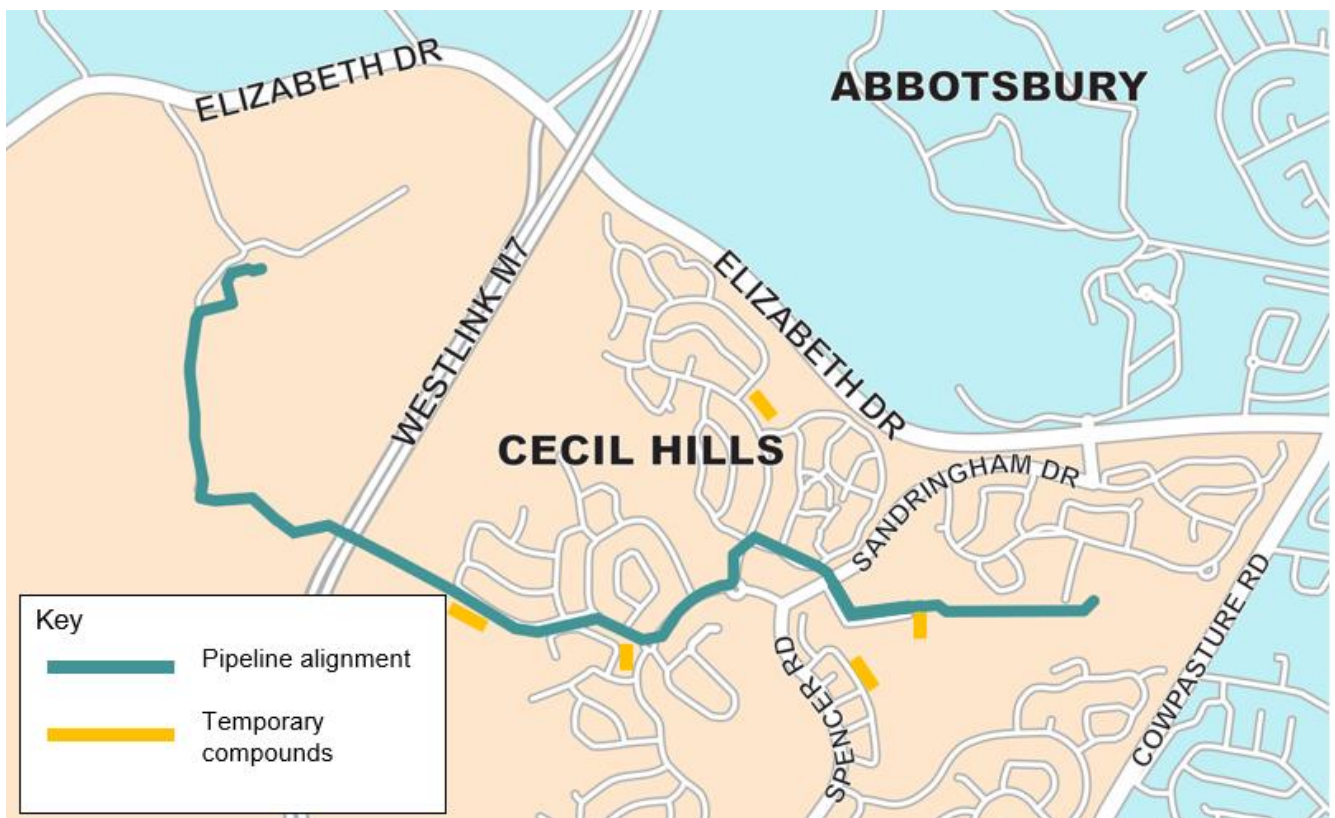
Residents can expect to see truck movements along:

- Battenburg and Benedict Close
- Feodore Drive
- Lancaster Avenue and Balmoral Circuit
- Prince Close
- Sandringham Drive
- Spencer Road and Leopold Place.

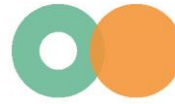
As pipeline construction moves through Cecil Hills, there may be impacts to driveway access. Parking in the surrounds may be limited. If we cannot access the work area, it can cause delays and prolong the work.

You may also notice an increase in noise, dust and vibration during this work. Residents close to the works may choose to cover their pools when not in use.

We will monitor our work to minimise any impact on the community and our community relations team will contact you if you are directly affected.



Pipeline route between Liverpool and Cecil Park Reservoirs



## Work hours

Our standard working hours are from 7 am to 6 pm Monday to Friday and 8 am to 1 pm Saturday.

We may need to work outside of our standard hours from time to time and you will be notified if this is the case.

Where possible, we will not work on Sundays or public holidays.

## Thank you

We would like to say thank you to residents living close to our work site and compounds in Prince Close and Leopold Place who have been coping with increased noise and truck movements in their neighbourhood.

Please contact the ProMac community team if you would like to discuss the work or its impact on your household.

## To know more about ProMac:

**Call:** 1800 678 098

**Email:** [ProMac@sydneywater.com.au](mailto:ProMac@sydneywater.com.au)

**Visit:** [www.sydneywatertalk.com.au/ProMac](http://www.sydneywatertalk.com.au/ProMac)

**Interpreter Service 13 14 50**

**Arabic • Chinese • Greek • Italian • Korean • Vietnamese**

إذا كنت تحتاج إلى مترجم، يرجى الاتصال بالرقم أعلاه.

如果您需要傳譯員的協助，請致電以上的號碼。

Αν χρειάζεστε διερμηνέα, τηλεφωνήστε στον παραπάνω αριθμό.

Se vi serve un interprete, telefonate al numero indicato sopra.

통역사가 필요하시면 위의 번호로 전화하십시오.

Nếu quý vị cần thông dịch viên, hãy gọi đến số trên đây.



Construction of the pipeline in Prince Close



The new reservoir at its full height