

December 2020

# Prospect South to Macarthur

## Connecting Liverpool and Cecil Park Reservoirs

By 2056 Sydney is expected to grow to around eight million people, putting our existing water network beyond capacity. Sydney Water has a long-term plan to increase resilience in our network and to extend the city's water capacity and supply.

As part of the Prospect to Macarthur (ProMac) project we are upgrading the existing reservoirs at Liverpool and Cecil Park as well as building two new reservoirs at Oran Park to allow for a total of 100 ML of additional reservoir capacity. That's the equivalent of about 50 Olympic-sized swimming pools!

We are also building a new drinking water pipeline to connect the Cecil Hills Reservoir to the Liverpool Reservoir (see below map), to provide drinking water services for 84,000 new homes in the South West Growth Area and Western Sydney

Aerotropolis Growth Area – even during the hottest and driest days.

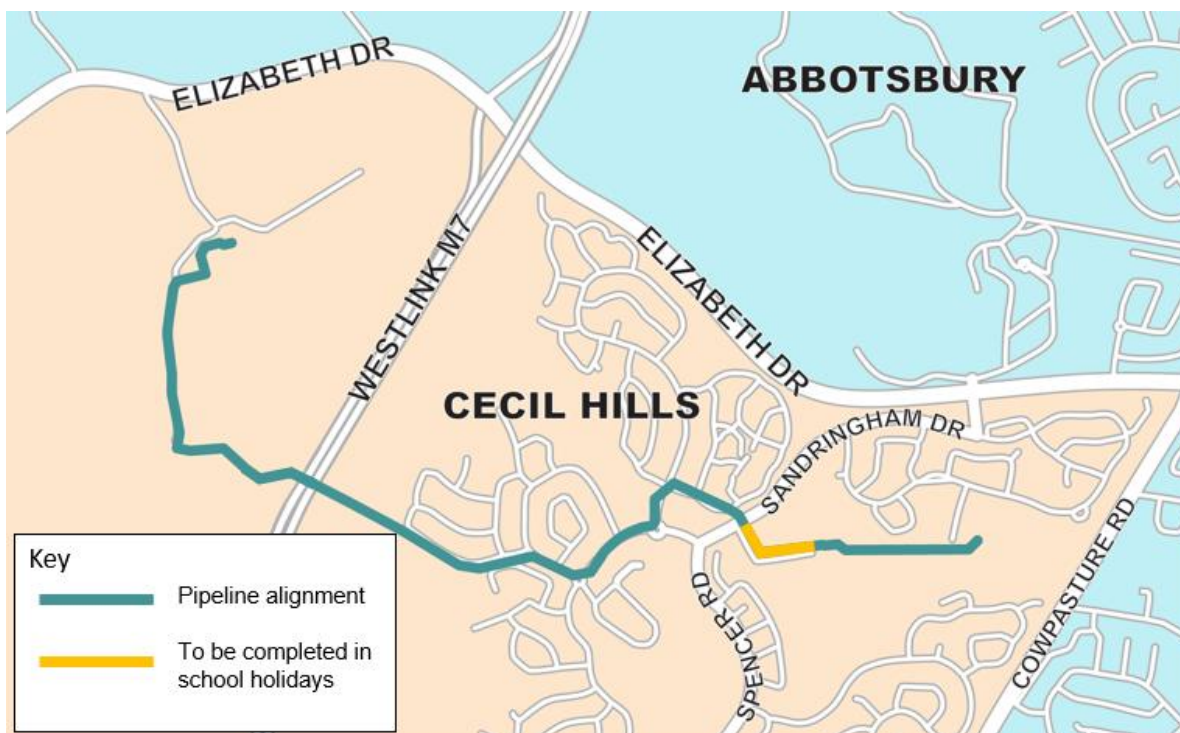
Sydney Water is investing in new infrastructure that will not only support future growth and development in Sydney's South West, but also meet the challenges of a changing climate.

ProMac will help Sydney Water deliver on its vision of creating a better life with world-class water services.

## Work starting 4 January in Cecil Hills

Our contractor Diona will construct the pipeline in Cecil Hills. Construction activities will commence in Prince Close (stage 1) on **Monday 4 January 2021**, to reduce the impact on Cecil Hills Public School. See page 3 for further information.

We'll keep you updated as this project progresses. Thank you for your cooperation during this essential work.



Pipeline route between Liverpool and Cecil Park Reservoirs



From January to the end of February 2021, weather permitting, stage 1 work will involve:

- clearing trees and removing vegetation within 20 metres of our work area
- locating existing underground services and determining ground conditions
- using machinery to complete construction works
- installing pipes and valves
- restoring the impacted area.

## Work hours

To fast-track stage 1 of the pipeline's construction past Cecil Hills Public School, our work hours for this stage are **7 am to 6 pm, Monday to Sunday**.

We will not work on public holidays.

## Construction traffic and impacts

There will be an increase in construction traffic around Cecil Hills during our work.

Vehicle access to Prince Close will be restricted from Monday 4 January 2021 until end February 2021.

Pedestrian access along Prince Close will be maintained throughout construction.

Residents can expect to see truck movements on:

- Sandringham Road
- Spencer Road
- Leopold Place
- Marion Street
- Prince Close

Traffic control and signage will be in place to guide pedestrians and vehicles safely around our work sites. Refer to the map on the following page for further information.

You may notice an increase in noise, dust and vibration during this work. Residents close to the works may choose to cover their pools when not in use. We will monitor our work to minimise any impact on the community.

Parking in the surrounds may be limited. If we cannot access the work area, it can cause delays and prolong the work.

Our community relations team will contact you if you are directly affected by our work.

On weekends, high noise impact activities such as rock breaking (hammering) and jack hammering will not start until after 8 am. These activities will be programmed so a one-hour respite break is provided after three hours of these activities.



Construction of a new water pipeline at the Sydney International Shooting Centre in Cecil Park



## Construction compounds

Two construction compounds will be established beside Cecil Hills Public School. These will be securely fenced and accessed via Leopold Place. Refer to the map below.

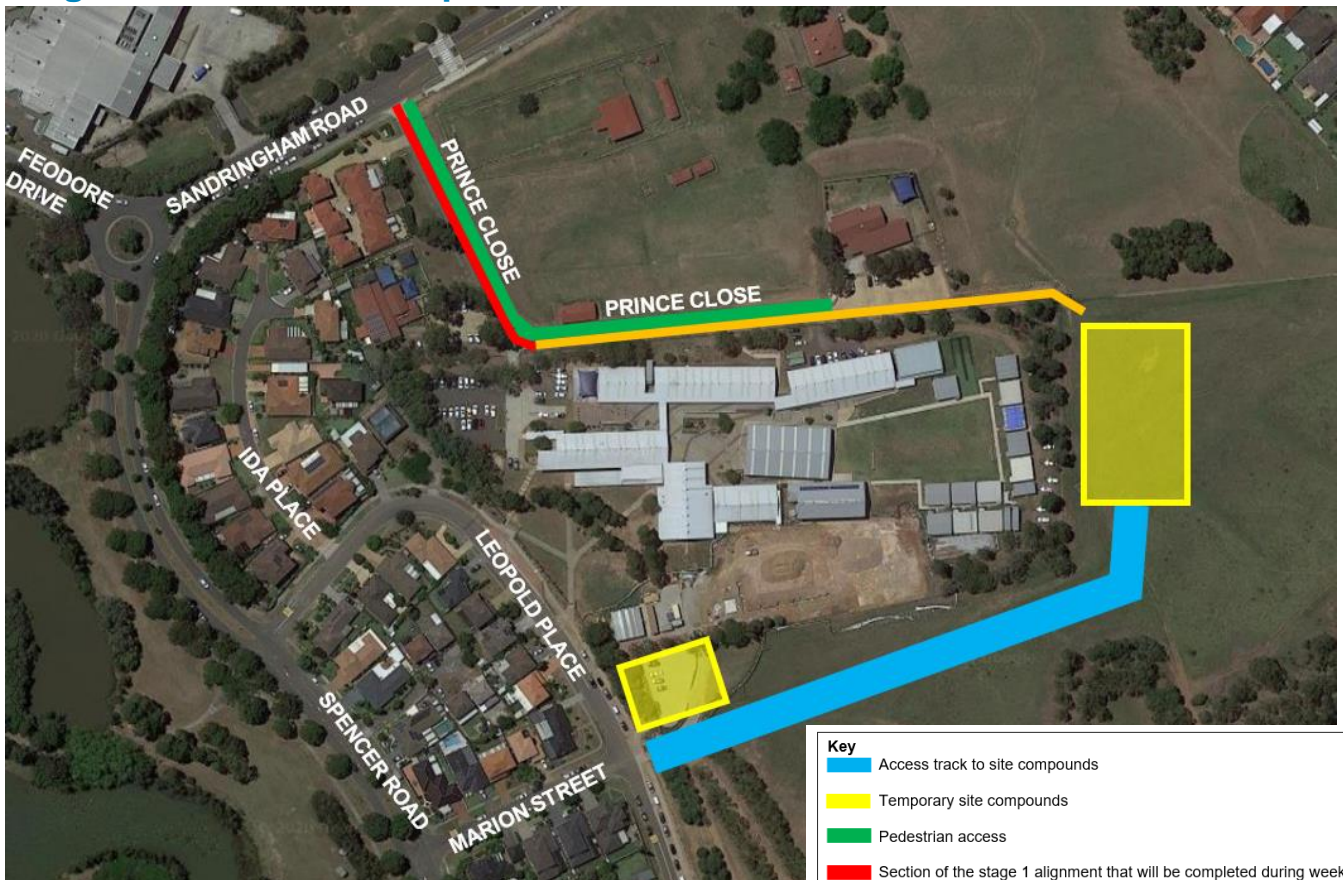
## Pipeline facts

We will install 1.95 km of pipeline from Liverpool reservoir to Cecil Hills reservoir. The size of the pipe will range between 750mm and 900m in diameter. The width of our trench will be between 2m and 8m wide. Our construction corridor will be up to 30m wide to allow for the movement of machinery.



An excavator forms a stockpile as it digs a pipe trench

## Stage 1 Construction Map



- Key**
- Access track to site compounds
  - Temporary site compounds
  - Pedestrian access
  - Section of the stage 1 alignment that will be completed during weekends. This work will start in week commencing **Monday 11 January 2021** and be completed by **end February 2021**, weather permitting.
  - Section of the stage 1 alignment that will start in week commencing **Monday 11 January 2021** and continue until **Friday 29 January 2021**, weather permitting.



## Western Sydney Parklands

A section of new pipeline is also being built in Western Sydney Parklands. This means the footbridge crossing the M7 and some walking tracks will be temporarily closed, and diversions will be put in place from February until November 2021 (refer to map below). If you are a user of the parkland's wonderful walking and bike tracks, you may like to visit their website to find out if the works will impact your visit (scan the QR code below).



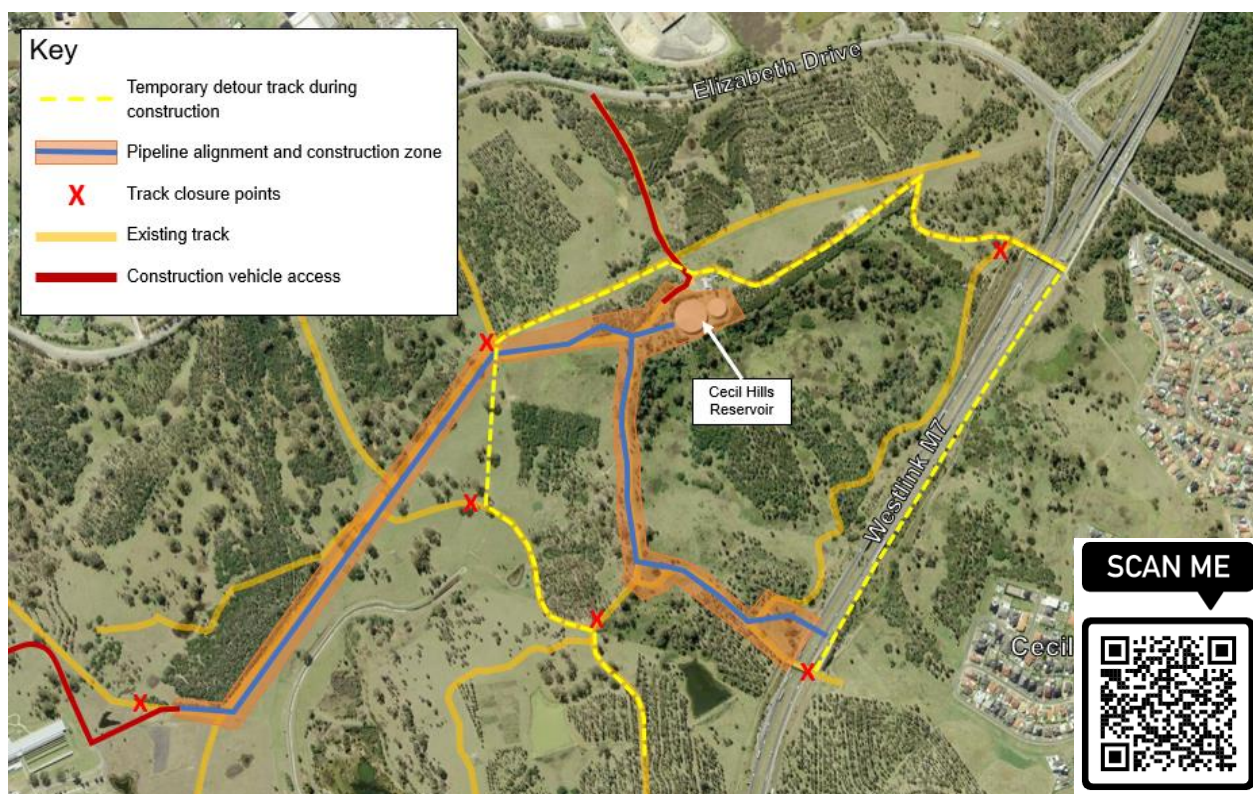
Image credit: Western Sydney Parklands Trust, replanting work

### To know more about ProMac:

**Call:** 1800 678 098

**Email:** [ProMac@sydneywater.com.au](mailto:ProMac@sydneywater.com.au)

**Visit:** [www.sydneywatertalk.com.au/ProMac](http://www.sydneywatertalk.com.au/ProMac)



Western Sydney Parklands temporary pathway diversions