



April 2023

Prospect South to Macarthur Update

Sydney Water has a long-term plan to increase resilience in our network and to extend the city's water capacity and supply.

As part of the Prospect South to Macarthur (ProMac) program we are building a new drinking water pipeline, reservoir and pumping station in Cecil Hills.

We thank the community for their continued support, patience and cooperation while we complete this essential work.

Liverpool Reservoir Pumping Station

Our contractor Service Stream has completed all work to form the exterior of the new pumping station and two high voltage switch room facilities.

Over the past three months, the contractor has completed:

- Construction of utilities to support stormwater, electrical and water systems
- Major concrete works, including a new retaining wall around the pumping station
- Connection of high voltage power systems to eventually power the pumping station
- Mechanical work to power the newly installed pumps in preparation for leak testing and pipe disinfections.

Over the next three months, the contractor will begin:

- Applying the final layers of asphalt to form the road around the pumping station
- Installation of permanent roadways, kerbs and driveways around the new facilities
- Commissioning of the new pumping station facility.

The new pumping station facility is expected to be operational by mid-2023.



An aerial view of the completed retaining wall surrounding the new Pumping Station and high voltage switch rooms.

Pre-commissioning the new pumping station

At the end of last year, the contractor installed around 1km of new underground pipework at the Liverpool Reservoir Pumping Station site. Pre-commissioning works are currently being undertaken in preparation for commissioning of the new pumping station facility. Once commissioned, the new pumping station and pipework will be connected to the live Sydney Water network.

We will notify the community when we are ready to begin commissioning works.

Pre-commissioning work involves:

- Testing the newly installed water pumps, fans and motors inside the pumping station
- Testing the newly installed pipework for leaks by charging high-pressured water through the new network at maximum operating capacity
- Disinfecting the new pipelines to ensure Sydney Water customers can enjoy high quality water services.

There will be no interruptions to your water service while we complete this work.

Restoration of the site

As work comes to an end across the site and areas are restored, we will progressively replant to filter views of the new infrastructure and return some of the bush outlook that residents previously enjoyed.

In the coming weeks, we will be contacting our direct neighbours to present a draft landscape design plan and seek their views.

Once the plan has been finalised, the first area to be landscaped will be around the new reservoir.



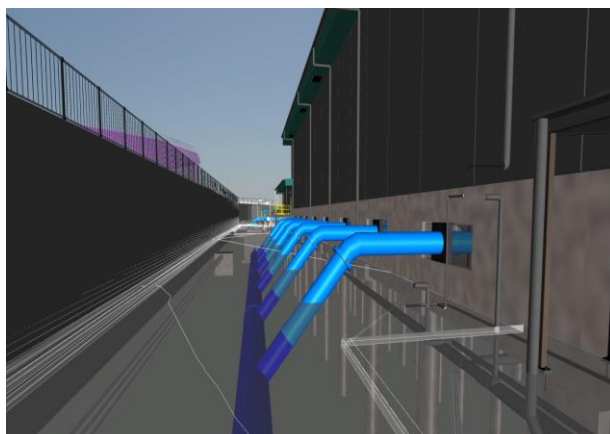
A view of a restored connection point between the new pumping station and existing Sydney Water network – located in the Cowpasture Road median. Restoration of this section was completed at the end of last year.



A view inside the new pumping station with newly installed pumps, motors and fans.



An aerial view of the new pumps and completed retaining wall at the rear of the new pumping station.



A digitally rendered image of new pumps connecting to newly installed pipework at the rear of the pumping station below ground level.

To know more about ProMac:

Call: 1800 678 098

Email: ProMac@sydneywater.com.au

Visit: www.sydneywatertalk.com.au/ProMac

Interpreter Service 13 14 50

Arabic • Chinese • Greek • Italian • Korean • Vietnamese

إذا كنت تحتاج إلى مترجم، يرجى الاتصال بالرقم أعلاه.

如果您需要傳譯員的協助，請致電以上的號碼。

Αν χρειάζεστε διερμηνέα, τηλεφωνήστε στον παραπάνω αριθμό.

Se vi serve un interprete, telefonate al numero indicato sopra.

통역사가 필요하시면 위의 번호로 전화하십시오.

Nếu quý vị cần thông dịch viên, hãy gọi đến số trên đây.