

9 December 2025

## Wastewater system emergency work - Mitchell Street, Glebe

Sydney Water is doing urgent emergency work to divert wastewater flows away from a leaking pipe deep underground in a highly trafficked area of Darling Harbour. While the leak is currently minor and contained, it is critical that we act quickly to divert flows away from this pipe to allow inspection and repair, as the issue may worsen.

To support this work, we're planning to install new pipework along Mitchell Street, Glebe, to help divert flows away from Darling Harbour and allow us to repair the leaking pipe.

### What's happening now?

Before we can start installing the new pipe, we need to complete geotechnical investigations to confirm ground conditions along Mitchell Street between Wentworth Park Road and Campbell Street. These investigations will include:

- locating underground services
- drilling potholes along sections of Mitchell Street.

Due to the urgent nature of this work, our crews are working 24 hours a day, every day to respond to this emergency. Where possible, we will schedule our noisy work during day light hours.

The work on Mitchell Street will start on **Tuesday, 16 December 2025, and is expected to take up to four days to complete, weather permitting.** The findings will help us finalise plans to manage wastewater flows as part of our emergency response. We'll share more details with the community as soon as our plans are confirmed, this could be in the coming days.

**This work will involve partial road closures at Mitchell Street. Traffic control will be in place to ensure safety for road users and pedestrians.** During the work, you may notice an increase in vehicle movements, noise and temporary disruption to pedestrian and traffic movements.

We apologise for the short notice and appreciate the support we are getting from the community as we work around the clock to respond to this emergency.

**This work will not interrupt your water or wastewater services.**

To find out more about this work, please contact our community engagement team at [SouthCommunity@Sydneywater.com.au](mailto:SouthCommunity@Sydneywater.com.au) or 1800 006 113 (option 6) during work hours, for afterhours contact please call 13 20 90.

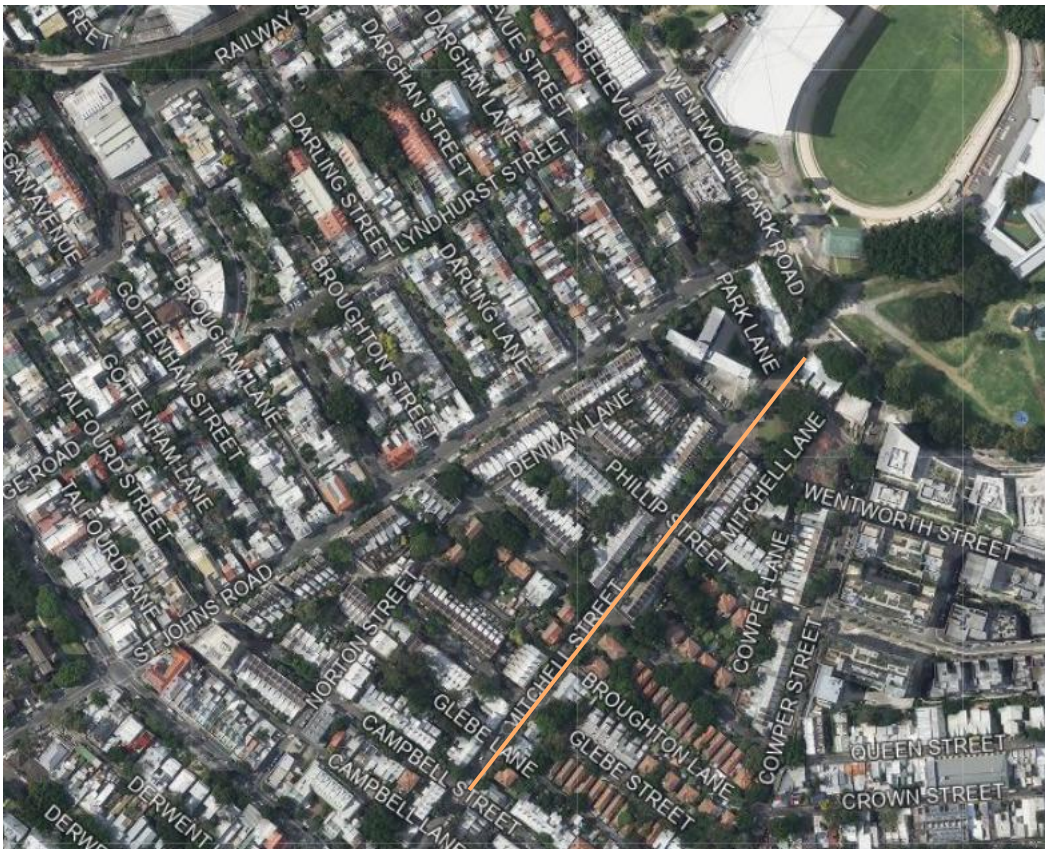
Thank you for your cooperation and patience during this essential work.

Yours sincerely



Shaun Gardner  
**Network Lead South**

**Map highlighting approximate work area at Mitchell Street, Glebe**



— Orange line showing approximate work area