



# Picton treatment, reuse and discharge

November 2020

**The Review of Environmental Factors (REF) for the Picton treatment, reuse and discharge project is on public display and we are seeking your feedback. We invite you to make a written submission no later than Sunday 13 December 2020.**

The REF assesses the potential environmental impacts of the project, which proposes changes to managing recycled water so we can expand wastewater servicing to support residential, commercial and employment growth while minimising the impact to local waterways and the environment.

## Our solution

The Picton Water Recycling Plant currently services 16,000 people in the townships of Picton, Tahmoor, Thirlmere, Bargo and Buxton. The plant is at capacity for managing the recycled water.

Communities are growing and we are planning to expand wastewater servicing.

We are developing a solution on how to manage the recycled water produced at the Picton Water Recycling Plant. Our solution is:

- upgrading the treatment process to improve recycled water quality
- expanding recycled water use to other farms near the plant, where feasible and with landowner agreement
- additional discharge to Stonequarry Creek or a proposed new discharge point at the Nepean River, just below Maldon Weir.

If approved, the project will allow more homes and businesses to connect to the wastewater system where approvals and infrastructure requirements are in place.

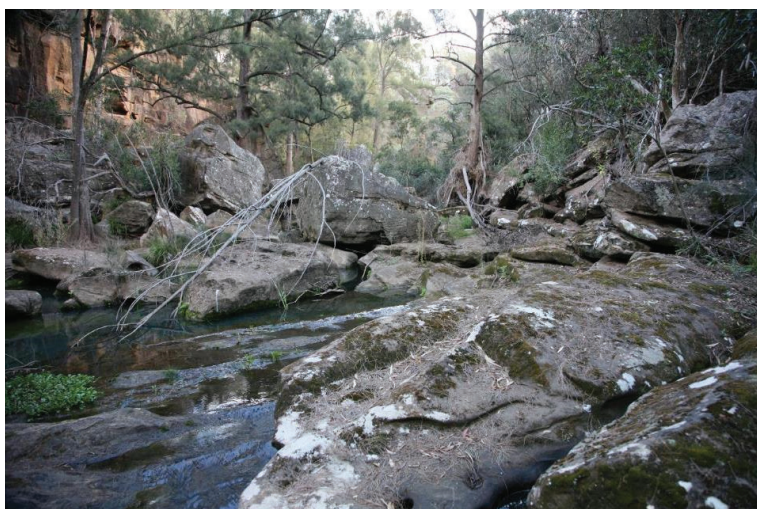
## Review of Environmental Factors

The REF considers how the construction and operation of the project will impact and/or benefit the surrounding environment. It assesses:

- waterway health
- soils/geology
- flora and fauna
- air quality
- waste management
- heritage
- noise
- visual impacts

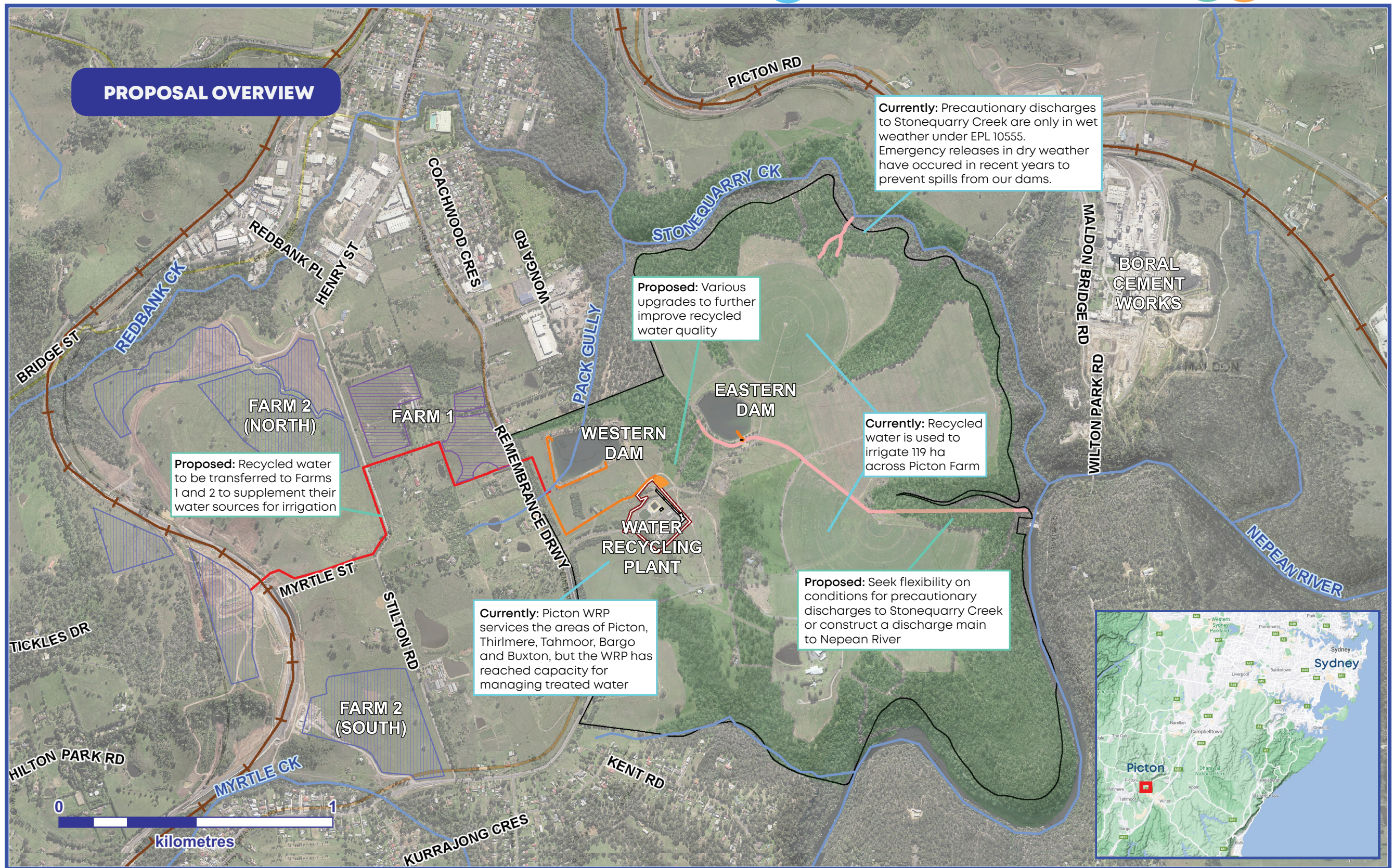
Subject to approval, construction is planned from mid-2021. If approved, we expect that we will also be able to accept new wastewater connection applications from mid-2021.

The REF can be downloaded from Sydney Water's website at [www.sydneywatertalk.com.au/pictontreatment](http://www.sydneywatertalk.com.au/pictontreatment)



Stonequarry Creek





**Legend**

- Off-site Reuse Pipeline
- Upgrade Works at WRP (various)
- Alternative Discharge Regimes

- Farm 1 Irrigation Area
- Farm 2 Irrigation Area
- Picton Farm
- Picton Water Recycling Plant

- Waterways
- Main Southern Rail Line (ARTC)
- Biodiversity Stewardship Area (under application)





## How to make a submission

You are invited to make a written submission on the REF. Your submission should include whether you support or object to the project and/or any comments you have.

Written submissions must be received no later than 5 pm Sunday 13 December 2020.

You can make a submission at:

- Sydney Water's website: [www.sydneywatertalk.com.au/pictontreatment](http://www.sydneywatertalk.com.au/pictontreatment)
- or by email: [WestRegionDelivery@sydneywater.com.au](mailto:WestRegionDelivery@sydneywater.com.au)

## Community information sessions

We are holding online community information sessions, where our project team will present the proposed solution and our specialists will be available to answer any questions you may have on the REF.

- **Session 1:** 12 pm to 2 pm,  
Tuesday 1 December 2020
- **Session 2:** 6 pm -8pm ,  
Wednesday 2 December 2020

Please register to attend a session by contacting the project team at [WestRegionDelivery@sydneywater.com.au](mailto:WestRegionDelivery@sydneywater.com.au) or call 1800 953 818.

NOV 2020

REF DISPLAY

We  
are  
here

EARLY 2021

Decision report

Q1 2021

Licence variation submission to EPA

MID 2021

Start construction  
Accept new wastewater  
connection applications  
(planned/subject to change)

Subject  
to licence  
variation  
approval

**The Review of Environment will be on display until 5 pm Sunday 13 December 2020**

### To make a submission:

- Visit our website at: [www.sydneywater.com.au/pictontreatment](http://www.sydneywater.com.au/pictontreatment)
- Email: [WestRegionDelivery@sydneywater.com.au](mailto:WestRegionDelivery@sydneywater.com.au)
- Contact us on: 1800 953 818

