

# Picton Treatment and Reuse Community Reference Group

Sydney  
**WATER**

# Acknowledgement of Country

Sydney Water respectfully acknowledges the traditional custodians of the land and waters on which we work, live and learn. We pay respect to Elders past and present.



# The Sydney Water team

- Viji Augustus, Project Manager
- Jenny Rogers, Environment Regulatory Manager
- Emma James, Technical Lead
- Sally Spedding, Senior Environmental Scientist
- Chris Dumbrell, Picton Plant Manager
- Angela Malpass, Engagement Lead – West
- Keiasha Naidoo, Stakeholder Engagement
- Estelle Tsaur, Communications Advisor

# Agenda

- The CRG journey and your feedback
- What Sydney Water is doing
- Preferred solution
- Review of Environmental Factors
- Next steps
- Q&A

# The CRG journey

Jenny Rogers  
Environmental Regulatory Manager

# Our effluent challenge

- WRP treatment capacity ~ 4 ML/day
- Wastewater coming into the WRP ~ 3 ML/day
- Compliant effluent management ~ 2.2 ML/day (2014-19)
- Excess effluent – currently on an Emergency Operating Protocol



# Your feedback

1. Retain the treatment plant
2. Retain Picton Farm
3. Trial wetlands to improve water quality
4. Discharge up to 4 ML/d to Stonequarry Creek
5. For larger flows up to 7 ML/d discharge to Nepean River



# What we are doing

Emma James

Water Sensitive Urban Design Lead



An aerial photograph of a wastewater treatment plant. The facility includes several large rectangular and oval-shaped lagoons. Some lagoons contain green water, while others are dark. There are several buildings, including a large one with a green roof and a smaller one with a grey roof. A white van is parked on a road. The background shows a misty landscape with trees and hills.

**Wetland trial**

**New  
Biosolids  
Holding  
Lagoons**

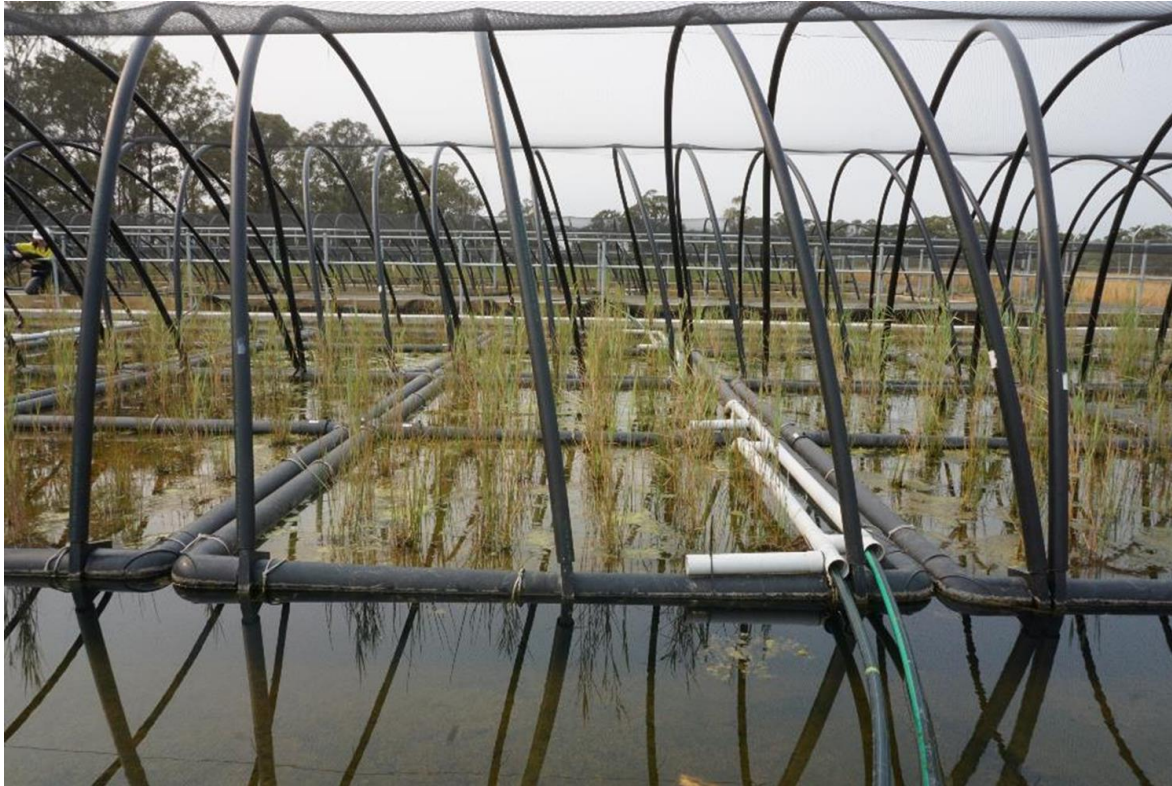
**New IDALs  
Intermittently Decanted  
Aerated Lagoons**



# Pilot wetland trial – shallow wetlands



# Pilot wetland trial – floating wetlands





# 2021 macroalgae trial



# Preferred solution

Viji Augustus

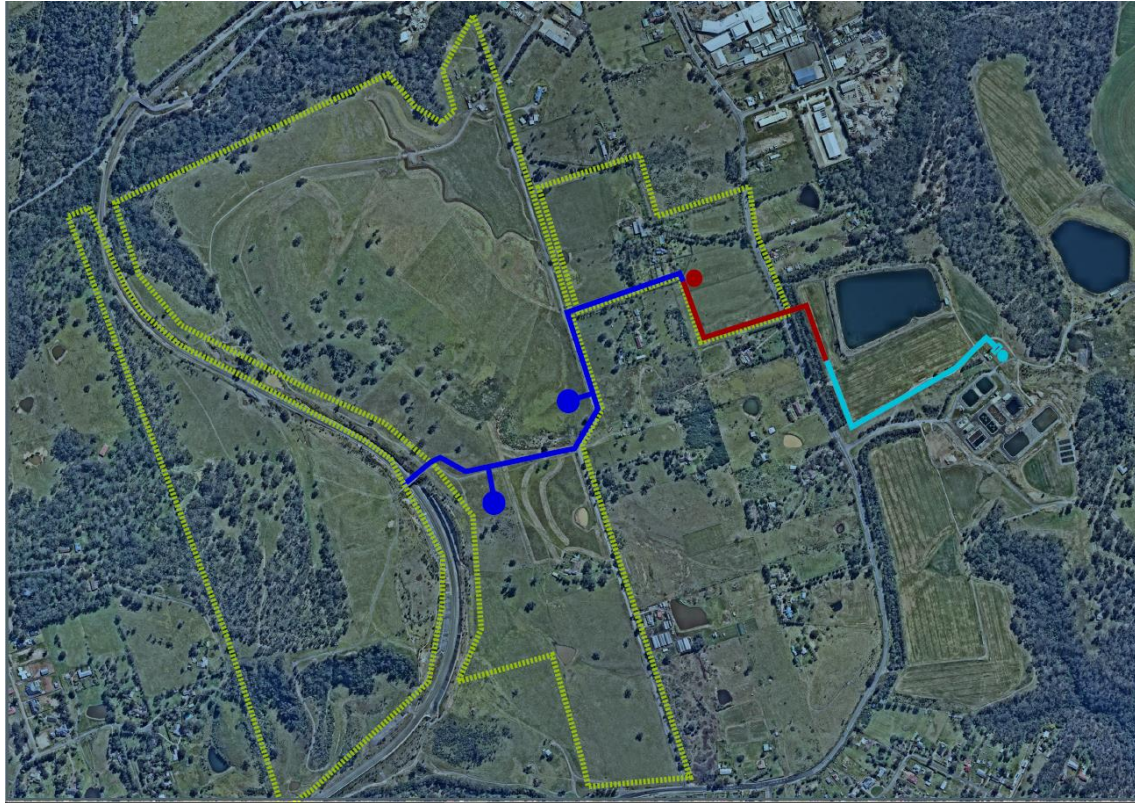
Senior Project Manager

# Project scope

## Maximise reuse, Minimise discharge

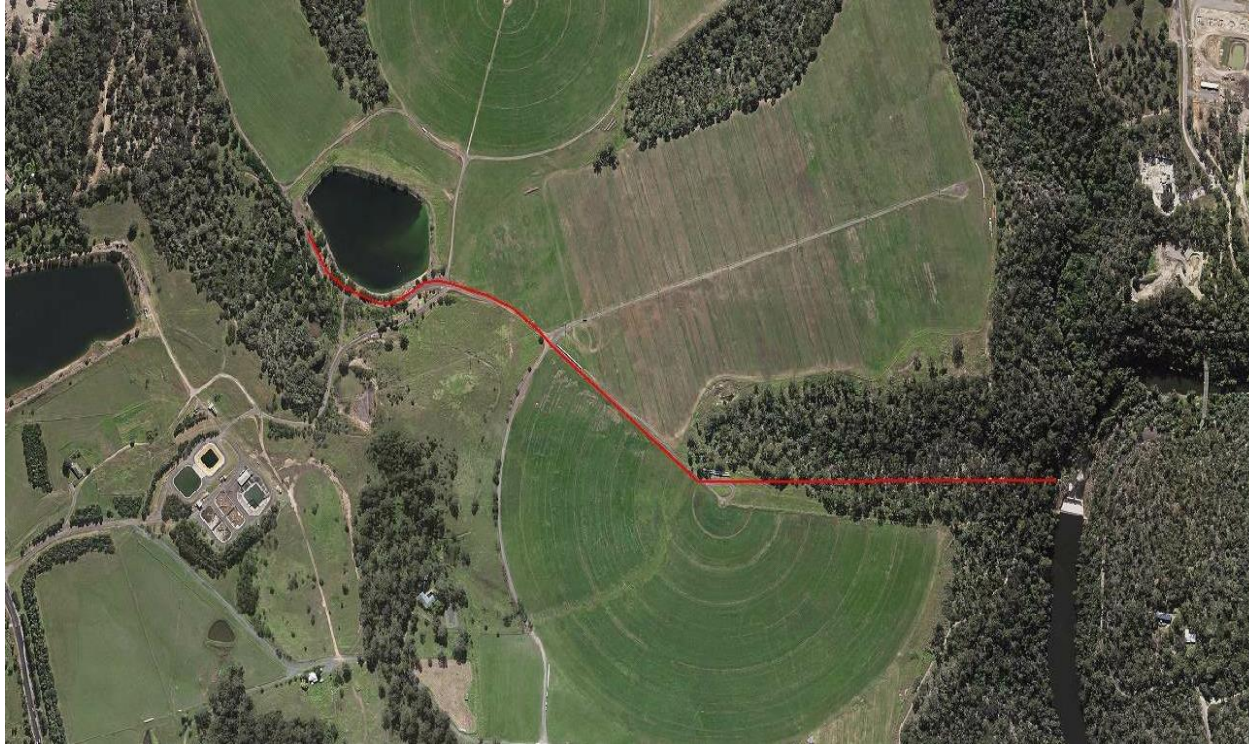
- Increase reuse: Picton Farm (119ha), additional ~ 60 ha offsite (subject to landowner agreements)
- Additional treatment at Picton Water Recycling Plant
- Increase discharge: changes to current licence to Stonequarry Creek and/or new pipeline to Nepean River

# Additional reuse on nearby farms





# New pipeline to the Nepean River



# Review of Environmental Factors

Sally Spedding  
Senior Environmental Scientist

# Review of Environmental Factors

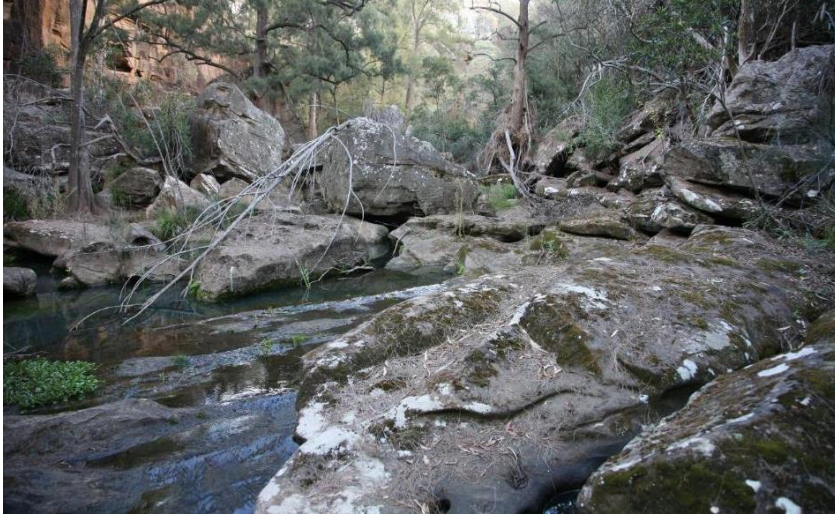
## *What is a Review of Environmental Factors?*

- *Assesses the potential construction and operational impacts and benefits*
- *Recommends safeguards to minimise negative impacts*

**Project Need** - increase effluent management capacity to match WRP capacity of 4ML/ day

- maximise **reuse**
- improve **treatment**
- increase **discharge**

# Review of Environmental Factors



## Project objectives/ measures of success

- Achieve compliance with a new Environmental Protection Licence
- Allow new development to connect to the wastewater network
- Manage effluent in a way that protects the waterway values

# Timeline for REF

- Aiming for REF public display late 2020 for 3 week display
- Early 2021 respond to submission, prepare Decisions Report
- Early 2021 submit licence variation application to EPA

# Next steps

# Next steps

- Close the CRG
- You can still have your say – be part of the REF process
- Any questions email  
WestRegionDelivery@sydneywater.com.au
- Call **1800 953 818**



# Q&A

**Thank you**