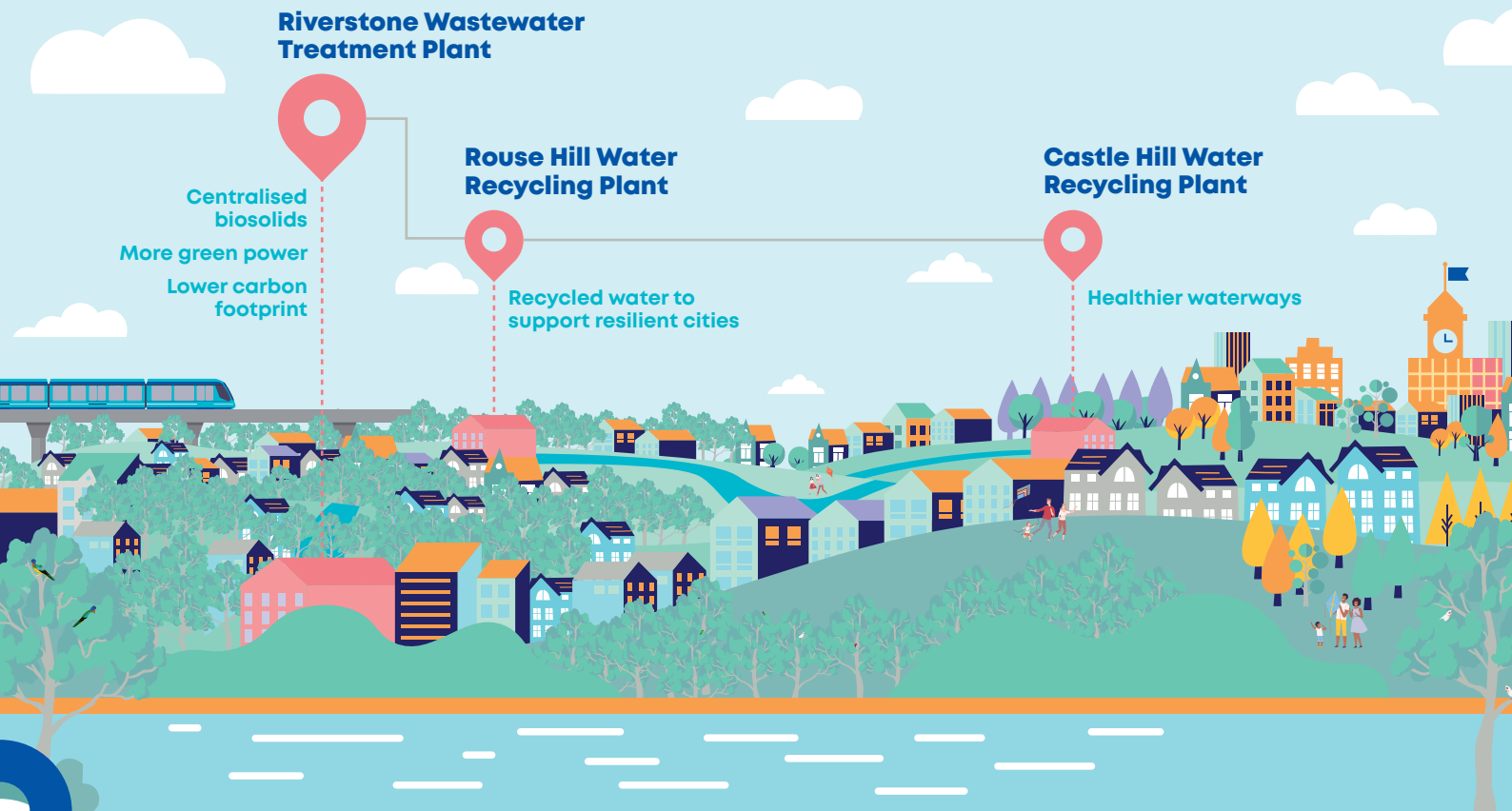


North West Treatment Hub

Keeping our waterways clean



We're doing our bit to protect local waterways

The North West is one of the fastest growing regions in Sydney. With population in the region expected to double, we're changing the way we operate to provide a more efficient and integrated wastewater system.

We're creating a North West Treatment Hub by linking three treatment plants in your area – Castle Hill Water Recycling Plant, Rouse Hill Water Recycling Plant and Riverstone Wastewater Treatment Plant. By linking these three plants, we're building a more sustainable system that will not only continue to provide a reliable wastewater service but will also one day enable us to reduce our energy and carbon footprint through renewable energy.

We will also continue to provide high quality recycled water to our local areas and increase protections to ensure cleaner waterways for our communities to live, work and play.

Creating the North West Treatment Hub will ensure we play our part in helping to grow the already vibrant communities in your area.

Improving Rouse Hill Water Recycling Plant

Upgrades at Rouse Hill are continuing, and we'd like to thank the local community for their support as we continue to work towards a North West Treatment Hub. Our work will continue progressively to ensure we adapt to the changing needs of the local area, and we will continue to keep you informed along the way. This newsletter will provide you with a snapshot of the work we are planning to start early next year. It will focus on improving the water quality to local waterways and on reducing odour impacts.

Find out more

With physical distancing in place, we're holding an online community information session. If you have some questions and would like to speak to the project team, please join our Zoom session on **Thursday, 26 August from 7pm to 8pm.**



To register, scan the QR code or go to NWTreatmentHubRH.eventbrite.com.au





Proposed works at Rouse Hill Water Recycling Plant

We're building a more sustainable system that will not only continue to provide a reliable wastewater service but will also one day enable us to reduce our energy and carbon footprint through renewable energy.

Healthier waterways

Our work will improve the quality of treated water that is discharged to local waterways.

A greener city with recycled water

Did you know Rouse Hill WRP provides 32,000 customers with recycled water? Every year, 2 billion litres of recycled water from Rouse Hill is used by households and industrial customers in the local area – that's the equivalent of about 800 Olympic sized swimming pools. Using recycled water for things like watering gardens or flushing toilets saves water stored in dams for drinking. This is a vital environmental sustainability outcome for our growing city. We will continue to supply recycled water to our existing and new customers.

Being a good neighbour

We're installing a new odour control unit and vent. It will enable us to better filter out odours from the air and reduce the impact on our neighbours.

Temporary changes to local roads

During construction, we expect there will be periods of some increased traffic around the plant. We will continue to use our main access via Mile End Road. Access via Withers Road will be used as needed for construction traffic. We will do our best to minimise any impact on the surrounding roads and community during work hours.

Our standard work hours will be between 7am to 6pm, Monday to Friday and 8am to 1pm on Saturdays. If work is required outside of these hours, we will notify affected residents prior to the work.

Careful tree removal

We know how highly valued trees are in this bushland setting. That is why we've planned our works to minimise the amount of vegetation clearing and tree removal needed. However, we do still need to remove some vegetation within our plant boundary. We will offset this impact by re-planting native vegetation elsewhere. When removing or trimming trees, we always take care to ensure the safety of wildlife in the area.

Next steps

This newsletter provides a snapshot of the work we are planning to do next. With more projects in the pipeline, as we progressively work towards an integrated North West Treatment Hub, we will continue to keep you informed.

For more detail on this next stage of work, our Review of Environmental Factors (REF) is available to download now. The REF looks at the potential benefits and environmental impacts of the project as we build it and once it's up and running. As this project is still in concept stage, it needs to cover all scenarios, even though there will be opportunities to improve or even eliminate some of these impacts as we continue to fine-tune this project.

You can view and download the REF at sydneywatertalk.com.au/North-West-Treatment-Hub



Find out more

We're holding an online information session to give you an opportunity to speak to the project team and answer any questions about the proposed works and the REF:

The information session will be held on **Thursday 26 August, from 7pm to 8pm.**

To register



Scan the QR code or go to NWTreatmentHubRH.eventbrite.com.au

E NorthWestTreatmentHub@sydneywater.com.au

P 1800 560 682

Have your say

The next step is for you to let us know what you think.

The REF is now on display on Sydney Water's project website: sydneywatertalk.com.au/North-West-Treatment-Hub

You are invited to make a written submission by **Sunday 5 September 2021**. You can make a submission via email to NorthWestTreatmentHub@sydneywater.com.au

**North West
Treatment Hub**

**Sydney
WATER**