



29 December 2025

Rouse Hill Water Resource Recovery Facility

Out of hours work

Sydney Water continues to support the projected housing growth in Sydney's northwest while providing reliable and resilient wastewater treatment, by delivering the North West Treatment Hub program. The program includes upgrades at Rouse Hill and Riverstone Water Resource Recovery Facilities (WRRFs).

What we have done so far

We wrote to you in September about our plans to pour concrete for our new wastewater infrastructure. We advised that this work would take **several months to complete**, and that we would update you on progress.

So far, we have completed the concrete pour for our membrane bioreactor (MBR) and anoxic tank. We are continuing with concrete pours for the dewatering facility and walkways as well as concrete lining installation in the Membrane Bioreactor tanks (see map on the next page for location of this work).

Work continues

Work is expected to continue from Monday 5 January 2026 for approximately three months, weather permitting.

During this time, work will occur from **4am Mondays through to 10pm Fridays**. Under certain circumstances, we may need to work until 10pm on Saturdays. There will be no work completed on Sundays. These hours are necessary to accommodate the volume of concrete required.

This means we will start earlier and finish later so that the concrete trucks are not held up in traffic enroute to site. We will also avoid movements during peak hours like school drop-off and pick-up times, when Money Close and Mile End Road are busier.

What you can expect

From time to time, there will be more trucks entering and leaving our site compound at 7 Money Close outside of standard construction hours. Within our site compound, concrete pumps, concrete vibrators, generators, compressors, vac trucks, pumps, and small mobile cranes will be used for this work.

Thank you for your patience whilst we complete this work.



Where

7 Money Close.



When

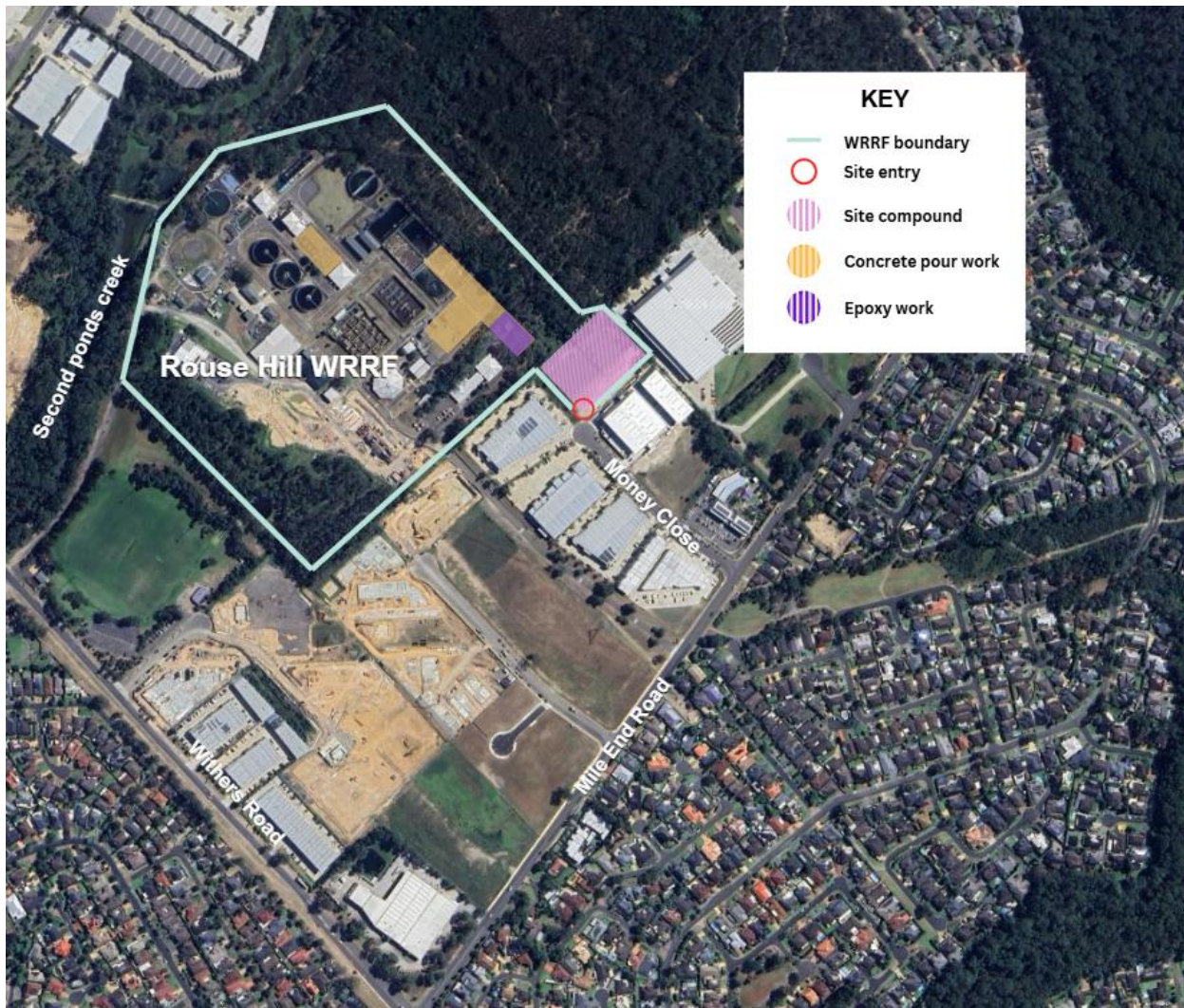
From Monday 5 January 2025 for approximately three months (weather permitting).



Out of hours work times

4am Mondays through to 10pm Saturdays. There is no work scheduled on Sundays.





Map showing work locations.

How can I find out more?

If you have any questions about this work or the North West Treatment Hub, you can scan the QR code or phone **1800 060 584**



If you need an interpreter, call the number listed below:

Interpreter service **13 14 50**

Arabic | Chinese (Traditional) | Chinese (Simplified) | Greek | Korean | Vietnamese

اتصل بالرقم أعلاه إذا كنت بحاجة إلى مترجم

如果您需要口譯員，請撥打上面列出的電話號碼

如果您需要口译员，请拨打上面列出的电话号码

Εάν χρειάζεστε διερμηνέα, καλέστε τον αριθμό που αναφέρεται παραπάνω

통역이 필요한 경우 위에 나열된 번호로 전화하십시오.

Nếu bạn cần thông dịch viên, hãy gọi số điện thoại được liệt kê ở trên

