

Sydney Water Update

Work in Cremorne and Mosman

December 2024 to February 2025

Community Engagement Representative:

Scott McKellar

0475 767 272

scott.mckellar@sydneywater.com.au

How the community benefits

Our wastewater system works behind the scenes to protect the environment and the health of our communities. This work will reduce the risk of wastewater overflows into the surrounding environment in the Cremorne, Mosman, and Manly area.

We often take for granted the impact that our wastewater systems have on the cleanliness of Sydney Harbour, Middle Harbour, and other waterways, so it is important we work on them from time to time to keep things running reliably. Our work in the area will add a further 50 years to the lifespan of our wastewater assets.

Northern Suburbs Ocean Outfall Sewer (NSOOS) - Main activities

The four main activities are:

1. silt and debris removal
2. surface preparation – use of hydraulic rock wheel and high pressure washing of the tunnel roof and walls ensure clean and solid surface for repair work
3. concrete repair – shotcrete sprayed over steel mesh restores the tunnel roof and walls to its original form; this work can be slow going (five metres per day or less) and depends on the level of repair needed
4. top layer application – a final layer of coating using calcium aluminate cement is sprayed onto the repaired area, providing a durable and smooth finish

Work crews enter and exit the NSOOS tunnel inside a shed at Quakers Hat Bay (QHB), Mosman. They also enter and exit at Brightmore Reserve, Cremorne and The Spit, Mosman.

Sydney Water's access to the NSOOS tunnel during daytime work hours at the locations, is dependent on a system diversion of wastewater flows into the Northside Storage Tunnel (NST) at Lane Cove.

Christmas Holiday Period

Please note our Christmas shutdown will start from close of business on Friday 20 December 2024.

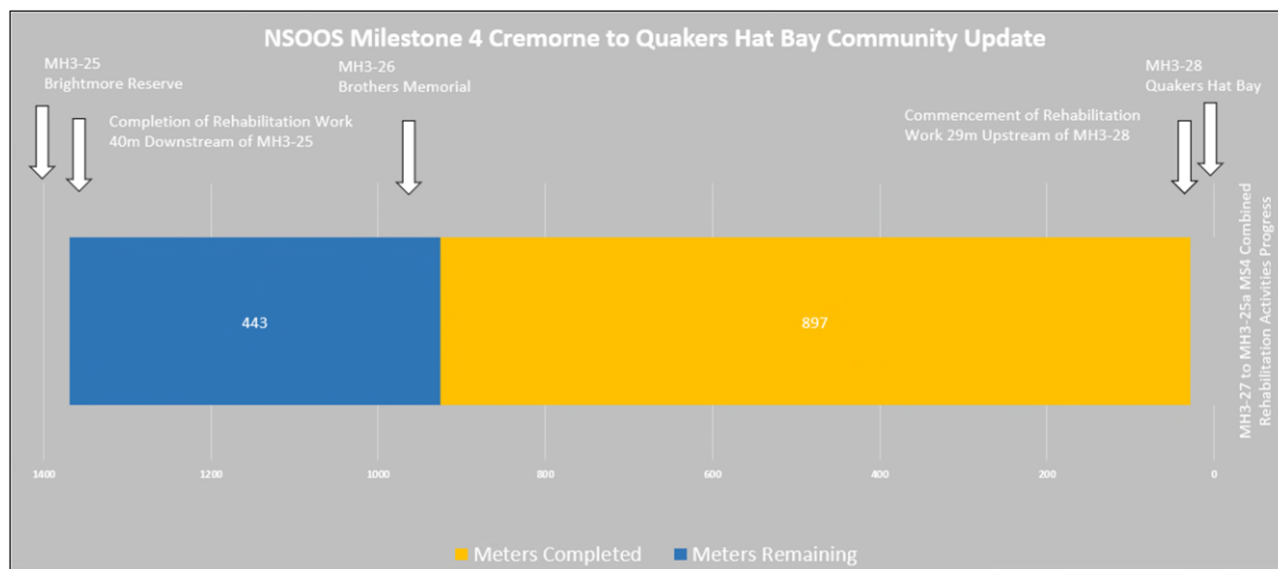
We will return to work on Monday 13 January 2025.

Sites will be locked, security cameras will remain operational and random inspections will be carried out over the holiday period.

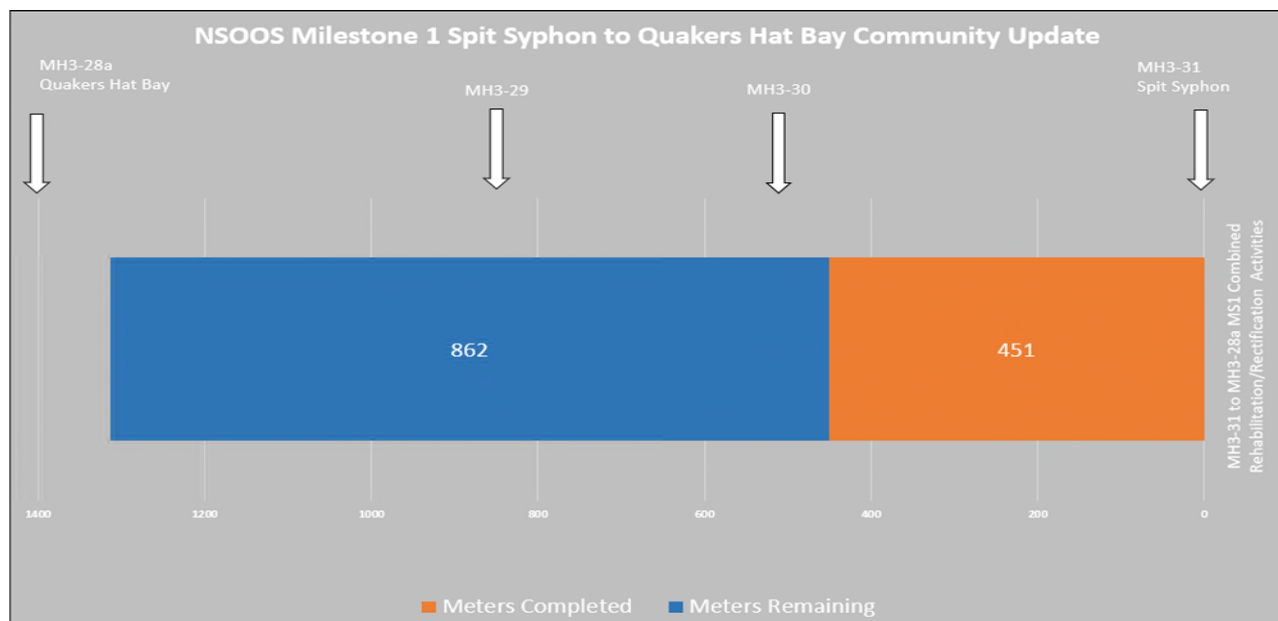
**Sydney Water Update - Work in Cremorne and Mosman
December 2024 to February 2025**

Progress overview

The table below provides a summary of progress rehabilitating the NSOOS tunnel between QHB and Brightmore Reserve (almost 1.4km).



The table below provides a summary of progress rehabilitating the NSOOS tunnel inside the more northerly section between QHB and The Spit (approximately 1.3km).



Our work sites and planned activities

Location	Work site activity	
	<p>Major work site with daily entry and exit for workers into tunnel to complete desilting, repair, and rehabilitation work</p> <p>Above ground machinery and equipment to support work inside the tunnel</p> <p>Delivery for construction materials</p>	<p>Unmanned work site with minimal activity except in an emergency</p> <p>Emergency tunnel access and egress for workers</p> <p>Emergency ventilation system, pushing fresh air into tunnel for safety of workers</p>
Brightmore Reserve, Cremorne	✓	
WH Brothers Memorial Park, Cremorne		✓
QHB, Mosman	✓	
Upper Spit Road, Mosman		✓
The Spit Syphon, Mosman	✓	

Odour and noise management

Working inside the tunnel while it operates results in some odour and noise issues.

We are committed to minimising the impact of our work.

For odours experienced during work hours, please call 1800 233 076. After hours, please call 13 20 90.

Odour



Due to the nature of our work, there is potential for odours to escape from the wastewater network while lids are open. We will have odour controls in place.

Noise



There will be some noisy works due to heavy machinery, including water blasters and generators. Noise blankets are used as mitigation.

Rehabilitation of Large Wastewater Submains in Mosman

Sydney Water has identified three large wastewater submains requiring rehabilitation and repair. The submains at Balmoral Slopes, Pearl Bay, and Spit Road flow into the NSOOS tunnel between QHB and The Spit at Mosman.

This is in the concept design phase. Sydney Water will consult the impacted communities for this work as a key part of their planning process.

Completion of our work in the area

Sydney Water's expected completion timing at these sites is early 2027.

The early 2027 timing includes contingency for us not being able to access the NSOOS tunnel with wet weather and other network conditions.

It also allows for full demobilisation and restoration of the sites at

- Brightmore Reserve, Cremorne
- Brothers Memorial Park – Fifth Avenue, Cremorne
- QHB – Bay Street, Mosman
- Upper Spit Road, Mosman

The Spit Syphon site will be demobilised with equipment and left secured for ongoing operational use by Sydney Water.

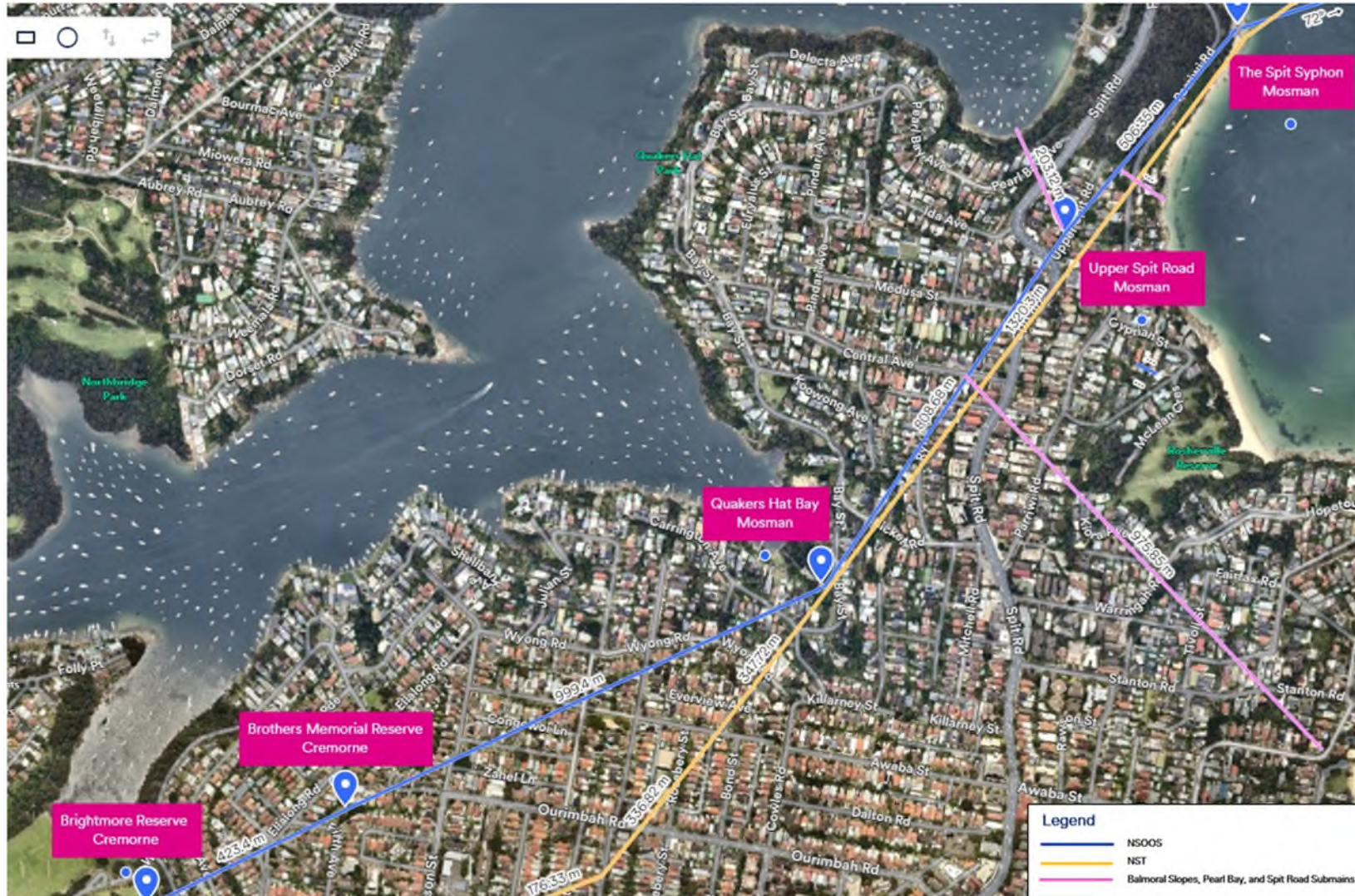
Thanks for your patience and understanding while we complete this important work. We also aim to be good neighbours and appreciate community feedback.

For more information

Visit our Sydney Water website at sydneywater.com.au/nsoos or scan the QR code.



Our Work Areas



Sydney Water Update - Work in Cremorne and Mosman December 2024 to February 2025