



New water reservoir in Marsfield

Project update: August 2023

We're building a new water reservoir in Marsfield to service the growing community. Our work will ensure we continue to provide clean and reliable water every day.

We will build the new reservoir next to our existing reservoir at 37 Abuklea Road. We'll also install new water pipes, a gauge house for our electrical equipment and a water quality facility.

What do I need to know?

Last year, we completed our site investigations to help plan for this work. In the coming weeks, we'll start getting the site ready for construction.

Keep up to date with weekly emails

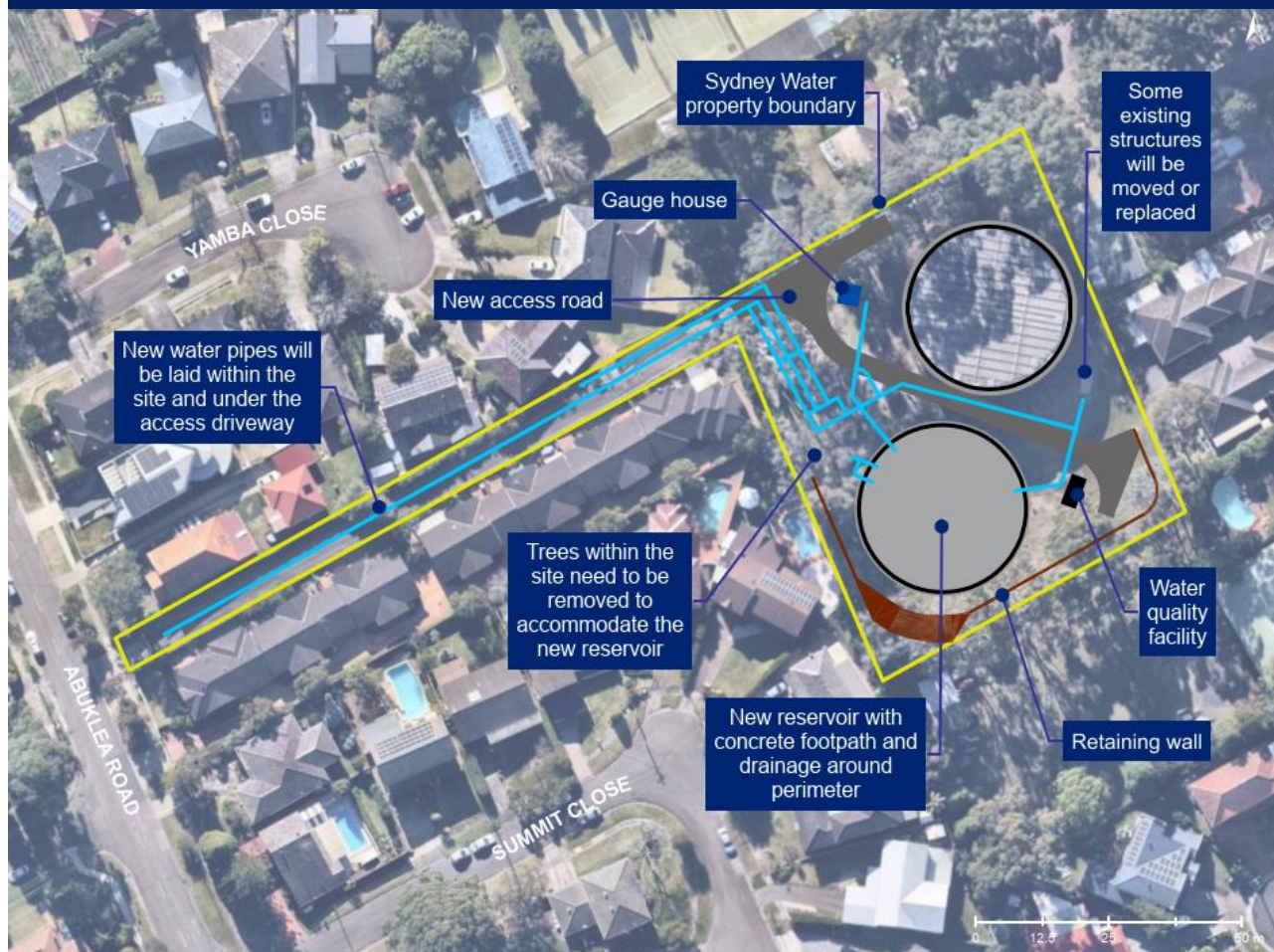


Join our email list to get weekly updates about our activities and expected impacts in the week to come. Scan the QR code, call 1800 943 119 or email us at confluence@sydneywater.com.au to join.

You'll only receive emails about this project and we won't share your details without your permission.



Key features of the new reservoir in Marsfield



Project timing

During our investigations, we found that the space constraints on site meant that we can't safely do our work activities simultaneously. This unfortunately means the project duration is longer than we previously anticipated.

Our work will be done in three stages. The main construction work will take about 20 months to complete, but some work is required before and after we build the reservoir tank.

This project update provides information about the site preparation work over the next six months. We'll provide details on each work stage as we progress through the project.

1. Site preparation work



Before we start building the reservoir, we need to prepare the site by clearing trees and setting up a compound for our workers. We'll also install temporary structures and services to ensure the existing reservoir continues to operate. This work will take about six months.

2. Main construction work

This includes excavation, building the reservoir and installing the gauge house, water quality facility and pipework within the site. We'll then conduct quality checks and connect the new reservoir to the system. We expect this work to take about 20 months.

3. Completion work

After the new reservoir is connected to the system, we'll install additional pipes under the driveway and build a new access road within the site. We'll also paint the tank and carry out landscaping and restoration work. This stage will take about six months.

This high-level program is subject to change based on weather and ground conditions.

We want to meet our closest neighbours

We know we have a long period of construction ahead of us. Our work will be disruptive at times, but we are committed to making every effort to reduce the impact our work has on you and your family.

We've been speaking to our closest neighbours about what they can expect when we're on site. If you haven't spoken with us yet, and would like more information, please contact us.

Site preparation work

This work stage will start in September and take about six months, weather and ground conditions permitting. Activities will include:

- removing up to 22 trees within our site – some of these trees are diseased or showing signs of irreversible decline, whilst others will need to be removed to make way for our infrastructure
- setting up a site office and amenities for our workers
- installing temporary pipework to ensure the existing reservoir continues to operate during construction
- temporarily relocating the gauge house
- electrical work to power the site and ensure the existing reservoir can continue to operate.

Our work hours and duration



We will work from **7 am to 6 pm, Mondays to Fridays**. We may work from **8 am to 1 pm on Saturdays**, when required.

We won't work on Sundays or public holidays. We'll let you know if we ever need to work outside these hours.

What can I expect?

We know our work can be disruptive, so we'll make every effort to reduce any impact this work may have on you. You may experience:

Noise



During the site preparation stage, there will be noise from chainsaws, cranes, excavators and woodchippers. As shown in the diagram to the right, the noisiest activity will be the tree removal, which is expected to go for about **three weeks**. We will write to you again before this begins.

During the tree removal work, we'll schedule breaks to give respite to our neighbours. Where possible, we'll avoid conducting noisy work before 8 am and use noise blankets around our work areas to help reduce noise.

We'll keep noise to a minimum, avoid unnecessary loud noises and follow all mitigation measures in the construction environmental management plan. This includes working with our closest neighbours to agree on respite options for our most disruptive periods of work.

Vibration



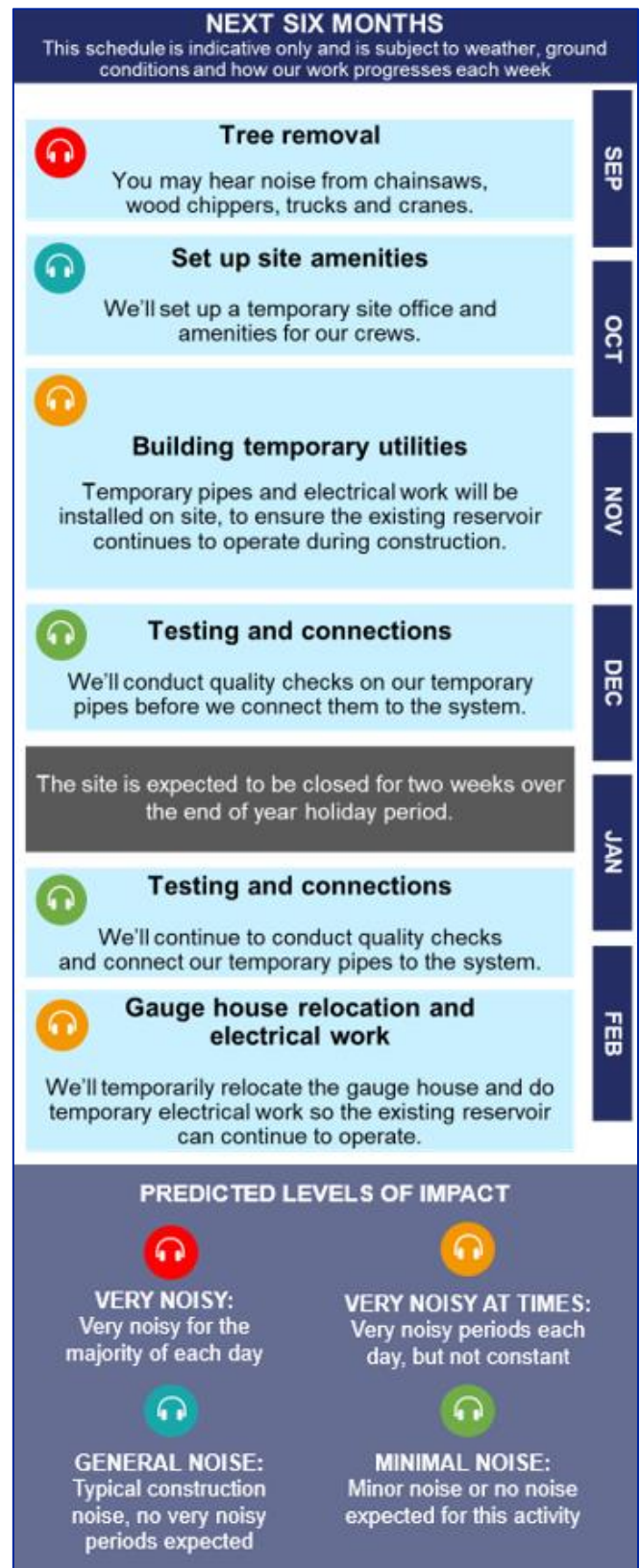
Some of our equipment may cause vibration. We will follow all mitigation measures in the construction environmental management plan to manage vibration impacts.

We will do property condition surveys for our closest neighbours before we start heavy construction work and again once we're finished, to ensure no damage is caused and to provide peace of mind.

Traffic and parking



We'll aim to minimise our impact on local streets around the site but you will notice an increase in work vehicles in the area.



Truck movements



There will be frequent vehicle movements in and out of the site from Abuklea Road during our standard working hours. Truck movements will vary each day. When needed, our traffic controllers will help keep traffic flowing safely and minimise disruption to local traffic.

Dust and mud



Some of our work during the site preparation stage will create dust. We will manage dust by wetting down our work area, the access driveway and stockpiled material. We will cover stockpiles when not in use and inspect our work areas often to make sure they are tidy.

If required, we'll also organise a street sweeper to make sure mud isn't tracked off our site onto Abuklea Road.

Visual impact



Properties around the site will notice a change in visual amenity during our work. Some of our equipment and machinery will extend above the fence line, so you will be able to see things like elevated work platforms and cranes while we do our work.

Shade cloth will help provide some privacy for our closest neighbours.

Construction compound



During our site preparation stage, we will use some space within our site to store equipment and set up amenities for our crews.

When the main construction stage begins, we'll move our compound to a nearby location outside of our site. We're investigating options for this compound location and will provide more information once this is confirmed.

Reservoir tank appearance

In the coming months, the community will be invited to give feedback on what the outside of the tank will look like. These preferences will be carefully considered along with Sydney Water's requirements and standards.

Stay tuned for more details about how you can have your say.

Where do I get more information?

If you would like to organise a time to meet, or want to know more, please contact our community engagement team at confluence@sydneywater.com.au or call **1800 943 119**.

We speak your language

Interpreter Service 13 14 50

Arabic • Chinese • Greek • Italian • Korean • Vietnamese • Hindi • Punjabi

إذا كنت تحتاج إلى مترجم، يرجى الاتصال بالرقم أعلاه.

如果您需要傳譯員的協助，請致電以上的號碼。

Αν χρειάζεστε διερμηνέα, τηλεφωνήστε στον παραπάνω αριθμό.

Se vi serve un interprete, telefonate al numero indicato sopra.

통역사가 필요하시면 위의 번호로 전화하십시오.

Nếu quý vị cần thông dịch viên, hãy gọi đến số trên đây.

यदि आपको दुभाषिए की सहायता की ज़रूरत है, तो कृपया ऊपर दिए गए नम्बर पर फोन करें।

ਜੇ ਤੁਹਾਨੂੰ ਦੋਭਾਸ਼ੀਏ ਦੀ ਮਦਦ ਦੀ ਲੋੜ ਹੈ, ਤਾਂ ਕ੍ਰਿਪਾ ਕਰਕੇ ਉੱਤੇ ਦਿੱਤੇ ਨੰਬਰ 'ਤੇ ਫੋਨ ਕਰੋ।