

Liverpool Water Resource Recovery Facility Upgrade

Malabar System Investment Program



Greater Sydney is growing, and our wastewater system needs to continue supporting this growth while protecting local waterways. The Liverpool Water Resource Recovery Facility (WRRF) plays an important role in treating wastewater from surrounding communities before it is safely returned to the ocean.

As the population grows, upgrades to treatment facilities help ensure the system continues to operate reliably and meets environmental standards.



Image: Liverpool Water Resource Recovery Facility

What is the Liverpool Water Resource Recovery Facility?

The Liverpool Water Resource Recovery Facility treats wastewater from homes and businesses across the surrounding catchment. Instead of viewing wastewater as waste, modern facilities recover resources such as energy and treated water through advanced treatment processes.


This facility forms part of the broader wastewater system connected to the Malabar deep ocean outfall, helping manage wastewater flows across the network.





What the project involves


Upgrades at the Liverpool Water Resource Recovery Facility will improve performance and support the wider wastewater network.


These include:

- 

Upgrades to existing treatment infrastructure by replacing older equipment so the plant can keep running smoothly
- 

Improvements to treatment processes by using new technology to treat wastewater more effectively
- 

Upgrades to support changing wastewater flows across the system by boosting capacity during busy periods and wet weather
- 

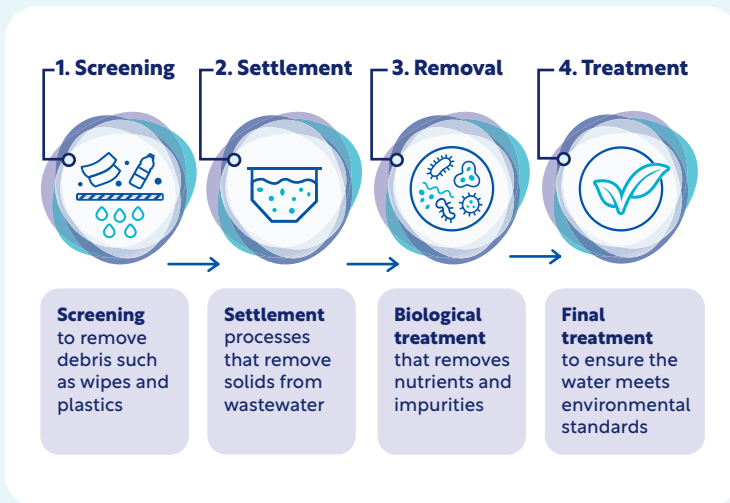
Reduce odour for surrounding communities through modernised odour control systems
- 

Improvements that support the broader Malabar System Investment Program

How the treatment process works

Wastewater arriving at the facility passes through several stages of treatment before being safely released or transferred through the network.

These stages include:



Benefits for the community

Upgrades to the Liverpool Water Resource Recovery Facility will help:

| | |
|--|---|
| | Support growing communities across Greater Sydney by increasing the volume of wastewater that can be treated |
| | Protect waterways and the surrounding environment by treating wastewater to a higher standard before being released |
| | Improve the reliability of wastewater services |
| | Strengthen the wider wastewater network |

What to expect during delivery

During upgrades, some temporary construction impacts may occur.

These will include:

- Construction noise and vehicle movements
- Activity within the existing treatment plant site
- Short term construction works as infrastructure is upgraded

Sydney Water will work to minimise impacts where possible and keep the community informed as the project progresses.

How this fits into the wider program

The Liverpool Water Resource Recovery Facility is part of the broader Malabar System Investment Program. Alongside upgrades to other facilities and pipelines, these improvements will help strengthen Sydney's wastewater network and support future population growth.

Get in touch

If you have any questions or would like more information, please contact Sydney Water:

- P** 1800 624 914
- E** malabarprogram@sydneywater.com.au

For more information on these projects, please visit our [website](#).

Sydney Water will continue to share updates with the community as the project progresses.



Indicative project timeline

