

Glenfield Water Resource Recovery Facility Upgrades

Malabar System Investment Program



Greater Sydney is experiencing significant growth, and our wastewater system needs to continue supporting growing communities while protecting local waterways. The Glenfield Water Resource Recovery Facility (WRRF) plays an important role in treating wastewater before it moves through the wider network and is released at the Malabar deep ocean outfall.

Upgrades to this facility will help ensure the wastewater system continues to operate reliably and meets environmental standards as demand increases.



Image: Glenfield Water Resource Recovery Facility

What is the Glenfield Water Resource Recovery Facility?

The Glenfield Water Resource Recovery Facility treats wastewater from homes and businesses across surrounding suburbs, which is then transferred through the wider network for final treatment and release at the Malabar deep ocean outfall.




The Glenfield WRRF uses advanced treatment processes that not only treat wastewater but also recover valuable resources such as energy produced from the breakdown of organic material during treatment.

This facility is part of Sydney Water's broader wastewater network that manages flows across the region.

What the project involves

Upgrades at the Glenfield Water Resource Recovery Facility will support the wider wastewater system and improve operational performance.

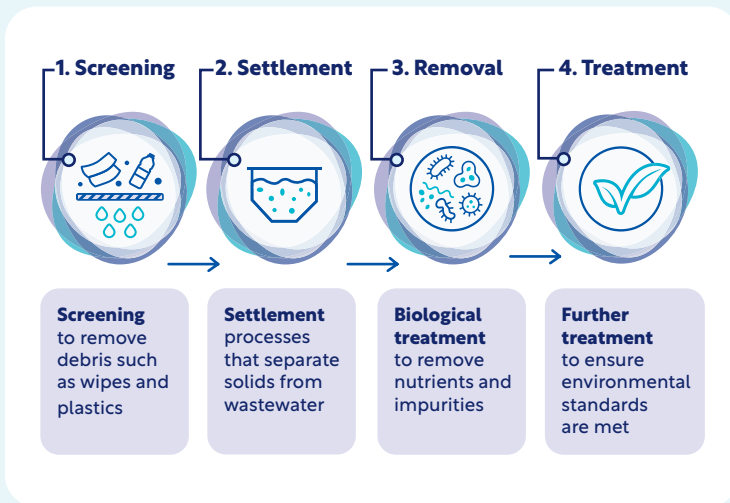
These include:

	Upgrades to existing treatment infrastructure
	Improvements to treatment processes and equipment
	Upgrades to support changing wastewater flows across the network
	Improvements that support the broader Malabar System Investment Program

How the treatment process works

Wastewater arriving at the facility goes through several treatment stages before moving through the system.

These typically include:



Benefits for the community

Upgrades to the Glenfield Water Resource Recovery Facility will help:

	Support Greater Sydney's growing population by increasing the volume of wastewater the facility can treat
	Protect local waterways and the environment by improving how wastewater is treated before it moves through the system
	Keep wastewater services reliable by upgrading equipment so the plant can better handle changes in flows, especially during wet weather
	Strengthen the regions wastewater network by supporting wider system upgrades that help manage flows across multiple areas

What to expect during delivery

During upgrades, some temporary construction impacts may occur.

These may include:

Construction noise and vehicle movements

Activity within the existing treatment plant site

Short term construction activities such as installing new equipment, small scale building works and upgrades within the existing treatment plant

Sydney Water will work to minimise impacts wherever possible and keep the community informed as the project progresses.

How this fits into the wider program

The Glenfield Water Resource Recovery Facility is one part of the Malabar System Investment Program, which includes upgrades to several treatment plants and pipelines to improve the resilience and performance of Sydney's wastewater system.

Get in touch

If you have any questions or would like more information, please contact Sydney Water:

P 1800 624 914

E malabarprogram@sydneywater.com.au

For more information on these projects, please visit our [website](#).

Sydney Water will continue to share updates with the community as the project progresses.



Indicative project timeline

