

Bondi Water Resource Recovery Facility

Community update - December 2021

© Sydney Water / WaterNSW Historical Research Archive

Growing with Sydney

The Bondi Water Resource Recovery Facility (WRRF) has played an intrinsic role in the development of Sydney. As our city has changed so too has the Bondi facility, to continue to meet community needs.

The Bondi WRRF was a vision of the Sewage and Health Board when in 1875 they recommended that city sewage be sent to a treatment plant at Bondi, to deal with the city's growing sewage problem.

The Bondi Sewage Treatment Plant (STP) was built between 1936 and 1953. Partial operation of the plant began in December 1953 – it was an ambitious project that had a huge impact on the way sewage was treated in Sydney.

From 1984 to 1990 the Deepwater Ocean Outfalls were constructed at Bondi, North Head and Malabar Wastewater Treatment Plants. The outfalls dispersed the primary treated effluent about four kilometres offshore, considerably improving water quality at Sydney's beaches.

Over the years we have undergone many upgrades and changes, in 2000 we did a major revamp project which prolonged the life of many of our assets at the facility by 20 years.

This December, the plant turns 68, and once again we are planning some major projects to ensure that our ageing assets do not fail and can continue to meet the needs and the expectations of our community, by continuing to treat wastewater in an environmentally safe and sustainable way.

Update on our project work

Ben Buckler Stack refurbishment

Constructed in 1888, the Ben Buckler Stack is a heritage listed operating asset that is an important part of the Bondi facility. It provides underground ventilation, as well as electrical and mechanical systems which ensure the continued daily operation of the plant.

We're planning a condition assessment to help us develop an asset renewal plan for this structure. Work will involve the repair of the external steel including lightning protection, ladders and steel bands and the repair of cracks to the concrete and brick structure.

Our aim is to help preserve the heritage value of the Ben Buckler Stack, as well as making it structurally safe and able to operate at optimum levels.

During this time, we will be using drones, scaffolding, netting, fencing and other machinery at the work site. We are working with the Golf Club and Council to minimise our impact on the community.

Fencing upgrade at Bondi Administration Building

We're upgrading the boundary fence and landscaping at our Bondi administration buildings located between Blair and O'Donnell Streets, North Bondi. Our administration building houses our office staff who work behind the scenes to ensure that the Bondi Water Resource Recovery Facility continues to protect the environment and the health of our communities.

We plan to start work in late November 2021 and expect to finish by late January 2022, weather permitting. As part of this work we will also be planting some native trees, shrubs, and grasses on the street to enhance the look and feel of our streetscape.



Built in 1888, the Ben Buckler stack will be upgraded to protect its heritage and functional value.

Projects at the Hugh Bamford Reserve

We're planning a couple of projects that will have some minor impacts on the Hugh Bamford reserve in 2022. This work includes:

- the stabilisation of the Hugh Bamford embankment area, between the playing field and the northern boundary of the facility. The proposed work will reduce the embankment slope and will include the installation of drains to manage storm water flows. This work is necessary to ensure that there are no physical impacts on facility assets and will protect the ongoing operations of the Bondi WRRF.
- geotech assessments at the Hugh Bamford Reserve which lies on top of the Bondi Ocean Outfall Pumping Station. In fact, most of our treatment plant is situated up to 40 metres underground, in a series of large caverns excavated out of solid rock. Our Geotech assessments will ensure that the roof structure continues to meet asset safety requirements and continues to safeguard users of the Hugh Bamford Reserve as well as protecting our facility.

Assessment work to begin on Eastern Safe Haven

The Eastern Safe Haven is a structure located on a rock shelf at the base of a 50 metre cliff face. It was designed to be an emergency exit for staff working on the underground system at the Bondi WRRF. The corridor leading to the Eastern Safe Haven is a drill-and-blast tunnel about 40 metres long, and this structure is a requirement in many safety and emergency procedures.

We will be carrying out a condition assessment of this structure, to help us define our upgrade program and ensure it can continue to be safely used as part of our emergency plans.

During the assessment we will be using drones to take images and videos of the structure to help us document its current condition.

Experiencing Odour issues? Let us know!

If you're experiencing odour issues you can let us know using a short online form via this QR Code. This is the quickest way to submit your experience and for us to respond.

You can also let us know when there is no odour present. This is valuable information too.

Reporting odour issues

Open the QR Code reader on your smart device.

Hold your device over the QR Code to scan it.

The form should automatically open, or prompt you to click to open the form.



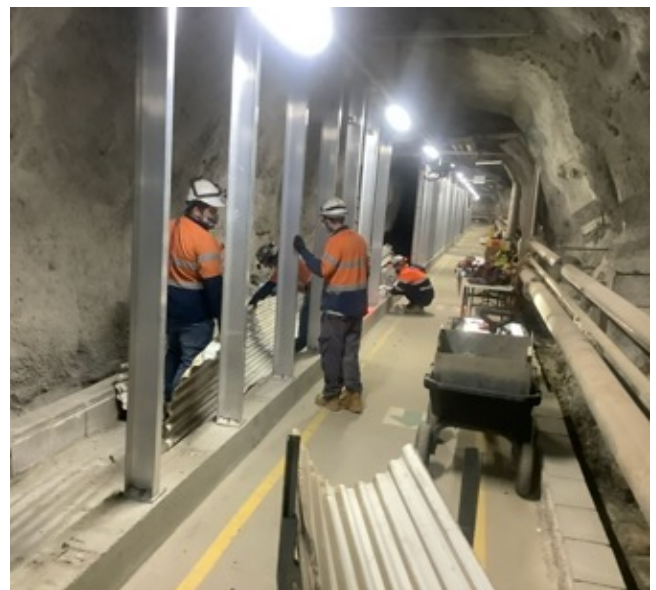
Ventilation and Odour system upgrades

We've partially upgraded our underground ventilation foul air systems to improve the ventilation, safety and odour impacts on the community, staff and the environment. This is a progressive project that is complex and will take many years to complete.

The underground plant has two ventilation systems; a fresh air system to feed clean air into the plant and a foul air system to extract and treat air from contaminated areas.

Beginning in August, our team worked 24 hour shifts to replace the two major sections in the foul air ventilation system. This work was delayed due to Covid restrictions; however, we have now completed the preliminary work. Over the next five years staged work will occur during winter to ensure we are continually reducing odour impacts on local residents.

We'd like to thank the community for their patience and understanding as we do this work. We know that our current work may lead to a temporary increase in odour at the site, however, this upgrade work is essential for reducing long term odour impact at Bondi.



Our crew working underground to upgrade the ventilation system

Join our Community Reference Group (CRG)

There are many ways to get involved and contribute to the success of the facility. Your insights and feedback are valuable and will help us to deliver the best outcome for all involved.

As a community representative you're invited to regular meetings with our team where you will be able to provide feedback about your experiences from the facility. This will help us to identify key community issues and help us develop our long term plans. We will also be scheduling some onsite tours for those interested in having a look behind the scenes.

To get involved, contact

Dounnia Lahoud on **1800 006 113 option 6**

or send an email to

Delivering4Customers@sydneywater.com.au

Need to contact us on another matter?

Call our Contact Centre on 13 20 92

Staying updated – on time, every time and paperless

We're committed to ensuring you're kept informed. If you'd like to receive email notifications about our work, please send your details to: Delivering4Customers@sydneywater.com.au

We take both the privacy and security of your data seriously. To find out how we use and protect your data, please refer to the *Sydney Water Privacy Policy* on our website.

Or open this QR Code and fill in your details



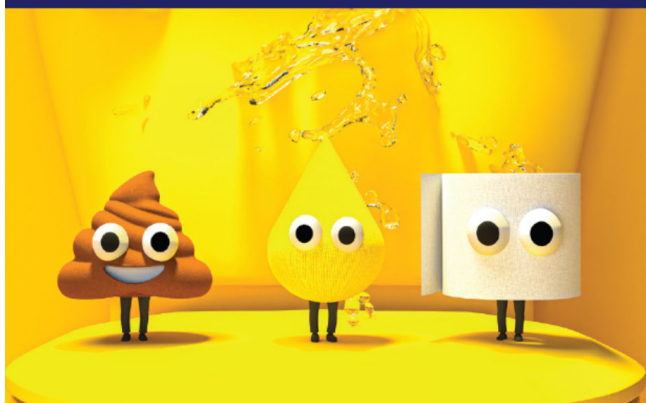
Let's all do our part

Whilst your household actions might seem small, we all contribute to wastewater every day. We're all connected, so what you do can make a big difference.

We remove hundreds of tonnes of unwanted bathroom products and kitchen waste from waterways and our wastewater system each year, costing customers and the environment.

This is due to the wrong things ending up down household drains and blocking pipes.

In the bathroom, you can flush
poo, pee and toilet paper



In the kitchen, you can put
water and soap down the drain

