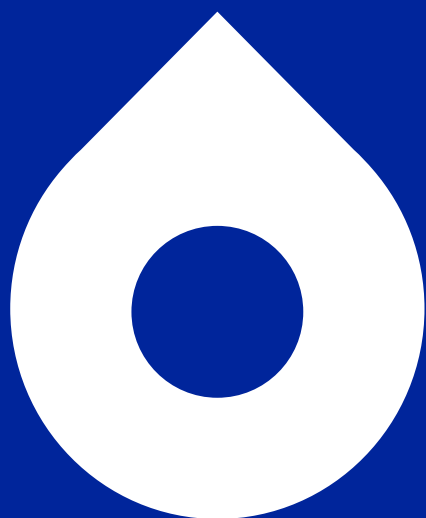


Sydney Water Servicing Information Review

June 2025





Acknowledgement of Country

Sydney Water respectfully acknowledges the Traditional Custodians of the land and waters on which we work, live and learn. We pay respect to Elders past and present.



Contents

1. Background	4
2. Currently Published Information	5
2.1 Capacity Reports and Servicing Information	6
2.1.1 Water Filtration Plants	6
2.1.2 Water Delivery Network	7
2.1.3 Wastewater Network.....	8
2.1.4 Wastewater Treatment Plants	9
2.2 Supplementary information published by Sydney Water	10
3. Additional Information requested by WICA Licensees	11
3.1 Summary of workshop feedback	11
3.2 Information that Sydney Water currently holds	11
3.3 Information that Sydney Water can reasonably determine or derive from current information	12
3.4 Information that is not readily available or cannot reasonably be derived from current information	12
3.5 Next steps	13
4. Appendix	14
4.1 Links to published servicing information and supplementary publications	14
4.2 Summary of workshops with WICA Licensees	14

Figures

Figure 2-1 Prospect Water Filtration Plant Capacity Report.....	6
Figure 2-2 Potts Hill Water Delivery Network Capacity Report.....	7
Figure 2-4 North Head Wastewater Treatment Plant Capacity Report.....	9



1. Background

Sydney Water publishes and periodically updates servicing information and capacity reports for each of our major water and wastewater system on our website, to comply with clauses 34 (1) and (2) of our 2024-28 Operating Licence. This servicing information may be of interest to Water Industry Competition (WIC) Act Licensees or potential private water and wastewater service providers, to identify opportunities to work with Sydney Water to provide cost effective solutions for customers and to make informed investment decisions.

In line with the Operating Licence requirements, we will be reviewing and updating this information to ensure it remains current and relevant.

Under clause 34(4) of the 2024 – 2028 Operating Licence:

(4) Sydney Water must:

a) by 30 June 2025:

- (i) consult with WIC Act Licensees or potential competitors to identify what information, in addition to the information specified in clause 34(2), they need to make informed investment decisions,*
- (ii) make publicly available a report identifying the broad types of servicing information requested by WIC Act Licensees or potential competitors, and classifying that information in the following categories:*
 - (A) information that Sydney Water currently holds and Sydney Water's timeframe for publishing such information,*
 - (B) information that Sydney Water can reasonably determine or derive from current information, and Sydney Water's timeframe for publishing such information, and*
 - (C) information that is not readily available or cannot reasonably be derived from current information.*

Sydney Water invited current WIC Act Licensees to participate in one-on-one workshops to review the published servicing information and discuss improvements and additional information requirements. Three of the six invited WIC Act Licensees attended these workshops. In addition to these workshops, we published a public invitation on the Sydney Water website, Sydney Water LinkedIn page and through the Australian Water Association's e-news publication for potential competitors to provide a written submission of their feedback on the servicing information. We did not receive any response to the public invite.

The scope of the review and subsequent information update is limited to currently published servicing information and system capacity reports available on the Sydney Water website [weblink - [Growth servicing and system capacity](#)].

This report provides a summary of the consultation process, the information currently published by Sydney Water, and the additional information requested by WICA Licensees. It notes the next steps and timing to further investigate and publish the additional information requested, along with updating the servicing information and capacity reports of Sydney Water's major water and wastewater systems.



2. Currently Published Information

Under the 2019-2024 Operating Licence, Sydney Water was required to provide the following servicing information for each of our major water and wastewater system, with an outlook covering at least 10 years:

- a) current and projected demand;
- b) current and projected capacity constraints;
- c) indicative costs of alleviating or deferring capacity constraints;
- d) locations where further investigation is needed.

The reports published by Sydney Water to meet this requirement are described in section 2.1 below.

Effective from 1 January 2022, the NSW Government rescinded the previous Nil Developer Charge Policy. Due to this change, Sydney Water was required to prepare Development Servicing Plans (DSPs) that establish infrastructure contribution prices for new connections to our water, wastewater and stormwater systems. IPART's determination on infrastructure contribution pricing includes requirements to publish information that partly overlaps with the 2019-2024 Operating Licence obligations:

- A clear and accurate description of the boundaries of the DSP area, including the specific water or wastewater systems that fall within the DSP boundary;
- Demographic and land use planning information including:
 - (1) the current residential population in the DSP Area;
 - (2) the estimated Equivalent Tenements in the DSP Area as at 1 January 1996;
 - (3) the projected population over a period of 30 financial years starting from the financial year in which the DSP will be registered with IPART; and
 - (4) the projected Equivalent Tenements in the DSP Area for each financial year over a period of 30 financial years starting from the financial year in which the DSP will be registered with IPART;
- Timing of works in the DSP Area including:
 - (1) completed capital works; and
 - (2) proposed capital works;
- The value and capacity of assets needed to serve growth (new connection) in the DSP area.

In the 2024-2028 Operating Licence, IPART included a change in the definition of current and projected demand to clarify that this should be expressed in Equivalent Tenements which aligns with the information required in DSPs. The 2024-2028 Operating Licence also clarified that Sydney Water is not required to duplicate published information, meaning servicing information can be published in either a DSP or as a separate report. Sydney Water must update servicing information for each of our major water and wastewater systems at least once by 30 June 2028 (or another date approved by IPART) to comply with clause 34 (1) and (2) of our 2024-28 Operating Licence.


2.1 Capacity Reports and Servicing Information

The following sections of the report detail the current published servicing information.

2.1.1 Water Filtration Plants

The information provided for each plant includes:

- Name of treatment plant
- Projections up to 2056 for total equivalent population (EP), average day demand (ADD) and max day demand (MDD) in ML/d up to 2056 for the catchment serviced by the plant
- Current treatment capacity of the filtration plant:
 - Treatment / filtration – normal raw water quality in ML/d
 - Treatment / filtration – poor raw water quality in ML/d
- Treatment capacity constraints for period 2022-2036 with estimated year of exceedance
- Anticipated augmentation and upgrades 2022-2036 with details:
 - Year commissioned
 - Description
 - Approximated capital cost (\$M)
 - Impact on servicing capacity
- Locations where further investigation is needed.



Prospect Water Filtration Plant Report

Name of water treatment plant

Prospect Water Filtration Plant

System Summary

Projected

	2026	2031	2036	2041	2046	2056
Total Equivalent Population (EP)	6,346,534	7,033,532	7,508,015	7,818,875	8,074,577	8,449,451
Average day demand (ADD) ML/d	1,413	1,507	1,570	1,609	1,640	1,692
Max day demand (MDD) ML/d	2,052	2,190	2,285	2,342	2,389	2,466

Current treatment capacity

(ML/d)

Treatment / filtration - high raw water quality	2,500
Treatment / filtration - good raw water quality	2,500
Treatment / filtration - poor raw water quality	1,500

Treatment capacity constraints for 2022 – 2036

Estimated year of exceedance

The plant will not have capacity for the MDD beyond 2029 even though it can meet the ADD up to 2046. Additional reliability and derated capacity exist with poor raw water quality.

Beyond 2029

Anticipated augmentation and upgrades

Year commissioned	Description	Approximate capital cost (\$M)	Impact on servicing capacity
2026	Additional screening capacity of 400 ML/d. Additional 8 filters for 860 ML/d filtration capacity. New production capacity will be increased to 3,300 ML/d.	58.5	Ensure reliability of supply and increase production capacity under poor raw water quality to ensure servicing of growth beyond 2029.

Further investigations

Further capital spending beyond 2036 will be required for increasing filtration capacity.

Figure 2-1 Prospect Water Filtration Plant Capacity Report

2.1.2 Water Delivery Network

The information for each water delivery network includes:

- Details of the water delivery system and list of distribution systems within the network
- List of all water supply zones within the water delivery network and summary of projected maximum day demand [MDD] up to 2051 for each supply zones
- Infrastructure requirements and capacity constraints providing details on:
 - Planning horizon
 - Infrastructure and location
 - Investment driver
 - Approximate capital cost (\$M)
- Locations where further investigations may be needed,
- Map of the network with capacity constraints highlighted for various catchments with the network.

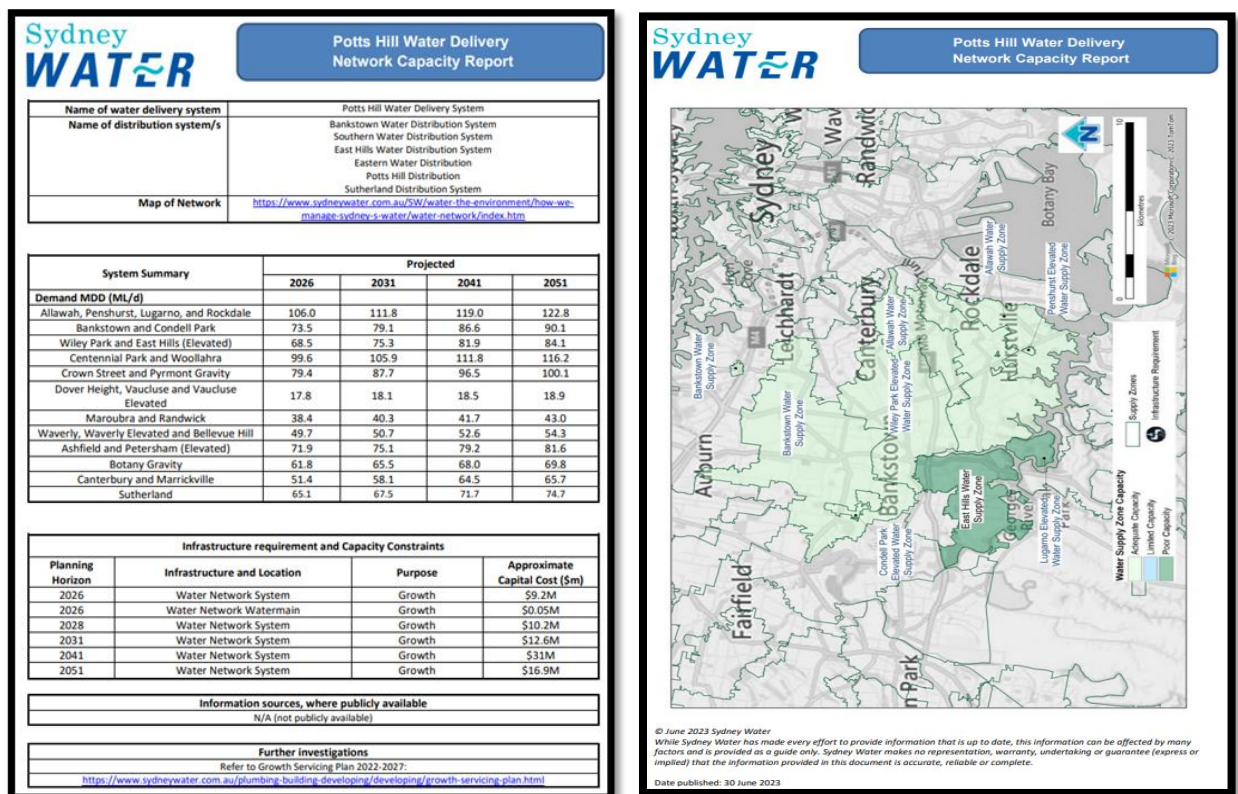



Figure 2-2 Potts Hill Water Delivery Network Capacity Report

2.1.3 Wastewater Network

The information for each wastewater network includes:

- Details of the wastewater system
- Projected average dry weather flow in ML/d into the network up to 2051
- Infrastructure requirement and capacity constraints providing details on:
 - Planning horizon
 - Asset class
 - Investment driver
 - Approximate capital cost (\$m)
- Information sources, where publicly available
- Locations where further investigations may be needed
 - A link to the Growth Servicing Plan 2022-2027
- Map of the network with capacity constraints highlighted for various catchments with the network.



North Head Wastewater Network

Capacity Report

Name of wastewater system		North Head Wastewater Network			
Map of Network		https://www.sydneywater.com.au/SW/water-the-environment/how-we-manage-sydney-s-water/wastewater-network/index.htm			
System Summary		Projected			
		2026	2031	2041	2051
Average dry weather flow (ML/d)		339.3	360.6	384.7	391.3

Infrastructure requirement and Capacity Constraints				
Planning Horizon	Infrastructure and Location	Purpose	Approximate Capital Cost (\$m)	
2026	Wastewater Network Storage	Growth	\$74.1M	
2026	Wastewater Network Wastewater main	Growth	\$28.83M	
2030	Wastewater Network System	Growth	\$103.3M	
2030	Wastewater Network System	Regulatory	\$161.3M	
2030	Wastewater Network Wastewater main	Growth	\$0.645M	
2030	Water Network System	Regulatory	\$1.3M	
2031	Wastewater Network Storage	Growth	\$1.4M	
2031	Wastewater Network Wastewater main	Growth	\$12.3M	
2041	Wastewater Network Pumping	Growth	\$27.5M	
2041	Wastewater Network Storage	Growth	\$1.2M	
2041	Wastewater Network Wastewater main	Growth	\$34.8M	
2051	Wastewater Network Storage	Growth	\$1.9M	
2051	Wastewater Network Wastewater main	Growth	\$4.5M	

Information sources, where publicly available	
N/A (not publicly available)	

Further investigations	
Refer to Growth Servicing Plan 2022-2027:	
https://www.sydneywater.com.au/plumbing-building-developing/developing/growth-servicing-plan.html	

*Approximated storage is used as an indicator of system upgrade requirements, but these would be subjected to an options assessment to identify a preferred solution.

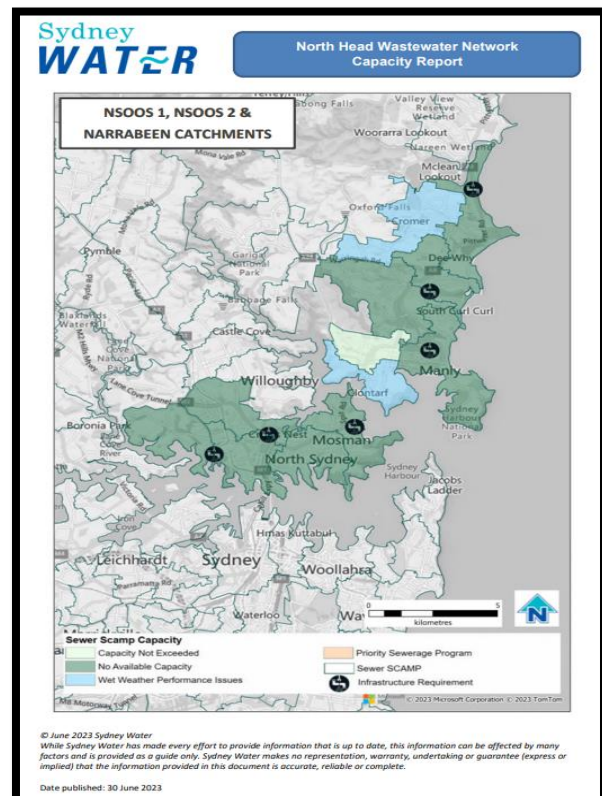



Figure 2-3 North Head Wastewater Network Capacity Report

2.1.4 Wastewater Treatment Plants

The information includes:

- Name of the wastewater treatment plant
- System summary providing details of:
 - Average dry weather flows in ML/d into the treatment plant projected up to 2056
 - Treatment plant load (nominated in Equivalent Population, Chemical Oxygen demand, EPCod) projected up to 2056
- Treatment capacity constraints identified for period 2022-2035 with the estimated year of exceedance
- Summary of servicing strategy for period 2022-2035
- Anticipated augmentation and upgrades for period 2022-2035 with details on:
 - Year commissioned
 - Work descriptions
 - Approximate capital cost (\$M)
 - Impact on servicing capacity
- Locations where further investigations may be needed.



North Head Wastewater Treatment Plant Report

Name of wastewater treatment plant

North Head Wastewater Treatment Plant

System Summary	2026	2031	Projected 2036	2046	2056
North Head WWTP ADWF (ML/d)	413.3	409.6	424.6	422.2	426.9
North Head WWTP load (EP ₁₀₀)	2,244,279	2,366,395	2,526,511	2,550,525	2,582,236

Treatment capacity constraints for 2022 – 2036

Biosolids treatment capacity – thickening and dewatering reliability constraints, and digestion capacity limited for current and future loads.

Current

Total nitrogen removal capacity – risk of exceeding total nitrogen load limit.

2026

Estimated year of exceedance

Summary of servicing strategy for 2022 – 2036

The growth servicing plan for the plant involves a transfer of catchment flows to a new treatment asset at Camellia via SP0067. This is critical for the planning of the plant as without this transfer, significant hydraulic and treatment upgrades will be required at North Head WWTP and in the network to deal with growth.

The Camellia WRP will comprise three investment stages: 2019, 2028, and 2031. The 2031 investment is the most significant as it involves the construction of the new treatment plant. There is a risk that this servicing strategy will not be feasible if a discharge licence cannot be obtained to the Parramatta River due to environmental or other risks.

Anticipated augmentation and upgrades for 2022 – 2036- North Head

Year commissioned	Description	Approximate capital cost (\$M)	Impact on servicing capacity
2027	Biosolids capacity upgrade: thickening upgrade, additional digesters, out loading. Phase 1 compliance/Growth upgrade	316	Biosolids treatment capacity increased and reliability issues resolved to allow growth servicing to 2046.

Anticipated augmentation and upgrades for 2022 – 2036- Camellia WRP(Sp0067)

Year commissioned	Description	Approximate capital cost (\$M)	Impact on servicing capacity
2028	Stage 1 Camellia WRP-15ML/d	232	Relieves network, and later North Head WWTP, capacity constraints allowing growth servicing to 2040
2033	Stage 2 Camellia WRP- 25ML/d	460	Relieves network, and later North Head WWTP, capacity constraints allowing growth servicing beyond 2036

Further investigations

North Head System planning underway to refine system augmentation options for growth. This includes comparative assessment of amplification of the network and North Head WWTP to continue the current mode of operation, as well as an inland flow diversion configuration. Continued refinement of the options and selection of preferred servicing scenario may lead to a significantly different asset investment response

© June 2023 Sydney Water

While Sydney Water has made every effort to provide information that is up to date, this information can be affected by many factors and is provided as a guide only. Sydney Water makes no representation, warranty, undertaking or guarantee (express or implied) that the information provided in this document is accurate, reliable or complete.

Date published: 30 June 2023

Figure 2-4 North Head Wastewater Treatment Plant Capacity Report

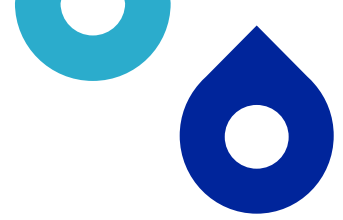


2.2 Supplementary information published by Sydney Water

In addition to the servicing information and system capacity reports, other documents published by Sydney Water can be used in conjunction to provide a broader view of the direction of Sydney Water's near and long-term investment strategy and pathways. These include:

- Growth Servicing Plan – provides our timescales for servicing growth and additional advice on our planning strategy, processes and funding and is updated annually. This report is on the Sydney Water website and has an interactive map providing these details for drinking water and wastewater services. Note, the data is organised around defined growth areas rather than water and wastewater systems
- Development Servicing Plans – provide information on future investments and planned infrastructure upgrades. These plans are published on both the Sydney Water and IPART websites. The organisation of the data is based on groupings that do not necessarily align with individual water and wastewater system boundaries.
- Long Term Capital and Operational Plan - an adaptive plan that captures Sydney Water's key infrastructure and operational decisions to 2050.
- Regional Master Plans - long-term and adaptive plans providing a framework for understanding the challenges and opportunities of an integrated water management approach for the region.

The links to each of these are provided in Appendix 5.1



3. Additional Information requested by WICA Licensees

3.1 Summary of workshop feedback

Sydney Water held constructive workshops with three WICA Licensees to review published servicing information and system capacity reports. Key points discussed are summarised below.

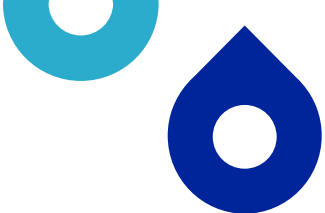
- Servicing information should be prioritised for systems where constraints currently exist or may materialize in the foreseeable future. If a system is not subject to capacity constraints, either now or in the foreseeable future, detailed information about the system is not needed.
- Publishing information to differentiate where and when Sydney Water intends to alleviate servicing constraints, and also to identify areas Sydney Water doesn't intend to service in the foreseeable future, will allow private sector to prioritise investment decisions.
- It was highlighted that if Sydney Water finalises servicing solutions before an investment plan is released, it effectively removes the opportunity for the private sector to offer alternative solutions that may be lower cost. WICA Licensees highlighted that the regulatory goal is to publish servicing information to ensure external parties can make informed investment decisions that could improve efficiency, drive innovation, and create benefits for customers through cost-effective solutions. The importance of visibility of the whole planning picture, even if at high level, was emphasized rather than only including finalised investment plans in system reports. Sydney Water notes that the long-term strategic vision is outlined in regional master plans and Sydney Water's Long Term Capital and Operational Plan (LTCOP) which are published on Sydney Water's website. These plans are recommended to be viewed in conjunction with the system information.

Sections 3.2 to 3.4 classify the additional information requested by WICA Licensees across three categories as stipulated by the Operating Licence for this report. Section 3.5 discusses the timeframe for providing this information:

3.2 Information that Sydney Water currently holds

Information details summarised under this category relates to information available within Sydney Water. Some of this information is currently available in published growth servicing plans or development servicing plans. The additional information requests from WICA Licensees are -

- To distinguish between infrastructure investments where funding is approved and where the investment is planned but investment has not been approved.
- To provide additional details about planned infrastructure investments, namely servicing capacity benefits of the investment, specific outcomes expected from investments and the location of proposed assets as well as where investments have drivers that cross product boundaries (i.e. potable reuse schemes to alleviate wastewater network constraints). Sydney Water notes that it can only reasonably provide this additional information where it is consistent with probity, confidentiality, security and commercial considerations.
- To provide clearer definitions in the growth servicing plan of the terminology used by Sydney Water to describe the different phases of planning (namely strategic planning, concept planning, and option planning), with the intention to clarify the scope of works under each phase and typical or expected timeframes.

- 
- To provide network diagrams, for example, sewer mains in the network maps, to identify locations for potential sewer mining opportunities. Sydney Water notes that system overview information is available for major wastewater systems in their respective development servicing plans. Sydney Water can only reasonably provide this additional information where it is consistent with probity, confidentiality, security and commercial considerations.

3.3 Information that Sydney Water can reasonably determine or derive from current information

Information summarised under this category will require additional time and effort to derive from existing data available with us. This may include but is not limited to – system reviews, modelling results, etc. The additional information requests from WICA Licensees are -

- To provide information to identify constraints relating to network, wastewater treatment plant capacity and load. Current reports provide system details at the wastewater catchment level only. Sub-catchment information is provided via a colour coded map to identify regions with adequate capacity/ no available capacity/ wet weather performance issues. Sydney Water acknowledges that identifying and evaluating system constraints is critical to identify investment opportunities and to make informed investment decisions for the private sector. Sydney Water notes that it is not possible to provide quantitative data on the capacity and constraints on each asset in the network. We will provide high level summary of capacity and constraints across a system limited to trunk infrastructure whilst ensuring that it meets the requirements of stakeholders to identify and understand system constraints.

3.4 Information that is not readily available or cannot reasonably be derived from current information

There was no information requested that falls within the scope of this category.



3.5 Next steps

The NSW government is implementing various policy initiatives to increase housing supply such as low to mid rise housing, transport-oriented development (TOD) etc. Sydney Water continues to work with the relevant government departments to understand and incorporate changes to population growth forecasts and associated servicing requirements.

At the time of writing this report, IPART is undertaking its review of our proposed regulated prices for the 2025-2030 period. The outcomes of this review may affect the location and timing of proposed growth-related investments. Current servicing plans may need to be reviewed and updated based on the outcomes of the IPARTs price determination.

Sydney Water intends to undertake a prioritised review of growth servicing following release of the next Sydney Housing Supply Forecast (2024), which will include recent policy changes including the TODs and increased infill. This review will form the basis of the next update to the servicing information and system reports and will ensure published information is up to date.

The reviews are expected to complete by mid-2027 covering most of major water and wastewater systems. Taking this into consideration, Sydney Water proposes to update servicing information for each major water and wastewater system by 30th June 2028. These updates to servicing information and system reports will include revisions to future forecasts, changes in proposed investments as applicable, and inclusion of additional information requested by WICA Licensees as summarised under section 3.2, 3.3 and 3.4.

System reviews will be prioritised based on scale of growth and compliance considerations and we will consider how best to make this information available progressively, rather than waiting to complete all systems before publishing. We will also continue engaging with WICA Licensees to seek feedback to inform development of a more efficient structure and format to suit the requirements of these stakeholders.

Finally, we also undertake to involve the WICA Licensees in our Master Planning process where we identify opportunities for them to provide value for money services for customers.



4. Appendix

4.1 Links to published servicing information and supplementary publications

1. Servicing information and system capacity reports

[Growth servicing and system capacity](#)

2. Growth servicing plan and map for period 2024-2029

[Growth Servicing Plan and map](#)

3. Development servicing plans

[Land development](#)

4. Long Term Capital and Operational Plan, and regional master plans

[Plans and strategies](#)

4.2 Summary of workshops with WICA Licensees

	WICA Licensee	Workshop date
1.	Veolia Water Technologies, Australia and New Zealand	31-03-2025
2.	Conexa Pty Ltd	02-04-2025
3.	Aquacell Pty Ltd	03-04-2025

Key agenda items covered in these workshops were -

- An overview of Sydney Water's current published servicing information.
- Feedback on the clarity and comprehensiveness of the published servicing information, and whether it meets the needs of industry stakeholders.
- Any specific information gaps that, if filled, could aid in company's strategic decisions.
- Next steps - how the discussed feedback will be considered and incorporated in the next update of the servicing information.