

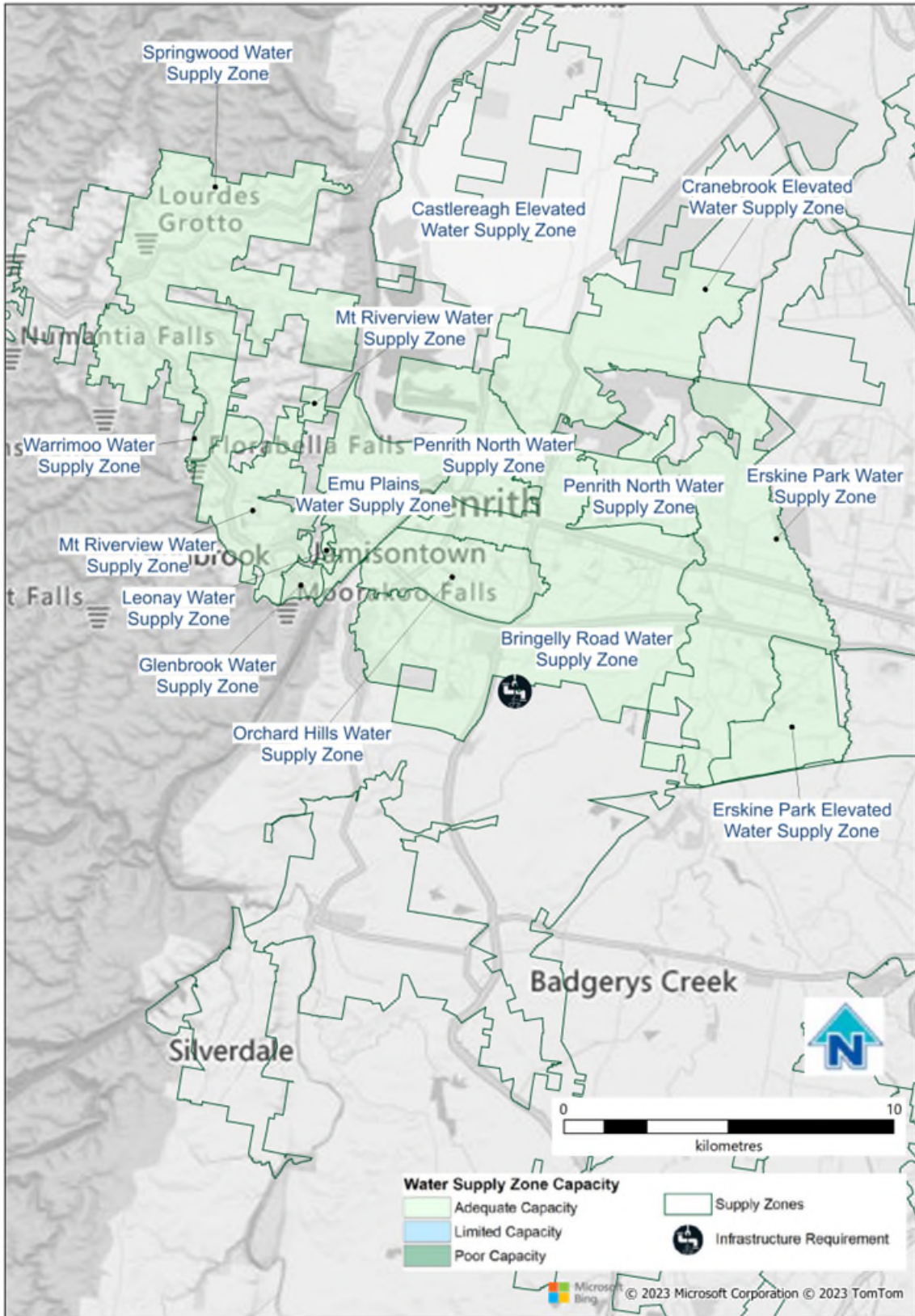
Name of water delivery system	Orchard Hills Water Delivery System
Name of distribution system	Orchard Hills Water Distribution System
Map of Network	https://www.sydneywater.com.au/SW/water-the-environment/how-we-manage-sydney-s-water/water-network/index.htm

System Summary	Projected			
	2026	2031	2041	2051
Demand MDD (ML/d)				
Bringelly Road	48.1	59.1	77.1	92.0
Castlereagh Elevated	3.9	4.0	4.0	4.1
Cranebrook Elevated	13.9	14.1	14.5	14.9
Emu Plains / Leonay	9.2	9.4	9.8	10.2
Erskine Park and Erskine Park Elevated	37.1	43.9	48.3	51.0
Mt Riverview and Glenbrook	10.4	10.5	10.7	10.9
Penrith North	12.9	16.2	20.3	20.8
Springwood and Warrimoo	11.8	11.9	12.1	12.3

Infrastructure requirement and Capacity Constraints			
Planning Horizon	Infrastructure and Location	Purpose	Approximate Capital Cost (\$m)
2026	Water Network Reservoir	Reliability	\$25M
2026	Water Network System	Growth	\$25.7M
2026	Water Network Watermain	Growth	\$6.1M
2031	Water Network Reservoir	Growth	\$98.6M
2036	Water Network Reservoir	Growth	\$10.7M
2036	Water Network System	Growth	\$1.5M
2036	Water Network Watermain	Growth	\$21M
2046	Water Network Watermain	Growth	\$0.7M

Information sources, where publicly available
N/A (not publicly available)

Further investigations
Refer to Growth Servicing Plan 2022-2027: https://www.sydneywater.com.au/plumbing-building-developing/developing/growth-servicing-plan.html



© June 2023 Sydney Water

While Sydney Water has made every effort to provide information that is up to date, this information can be affected by many factors and is provided as a guide only. Sydney Water makes no representation, warranty, undertaking or guarantee (express or implied) that the information provided in this document is accurate, reliable or complete.

Date published: 30 June 2023