

Overview

This Integrated Stormwater Scheme Plan shows the regional stormwater and recycled water infrastructure required to service the Mamre Road Precinct and to be managed by Sydney Water.

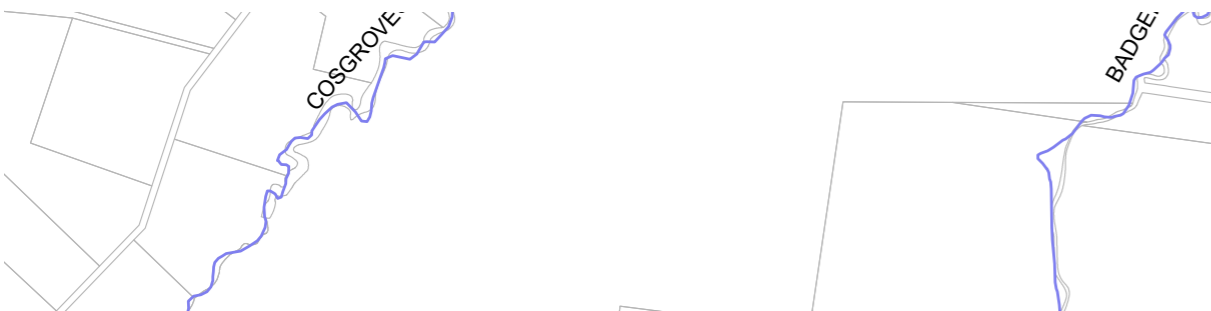
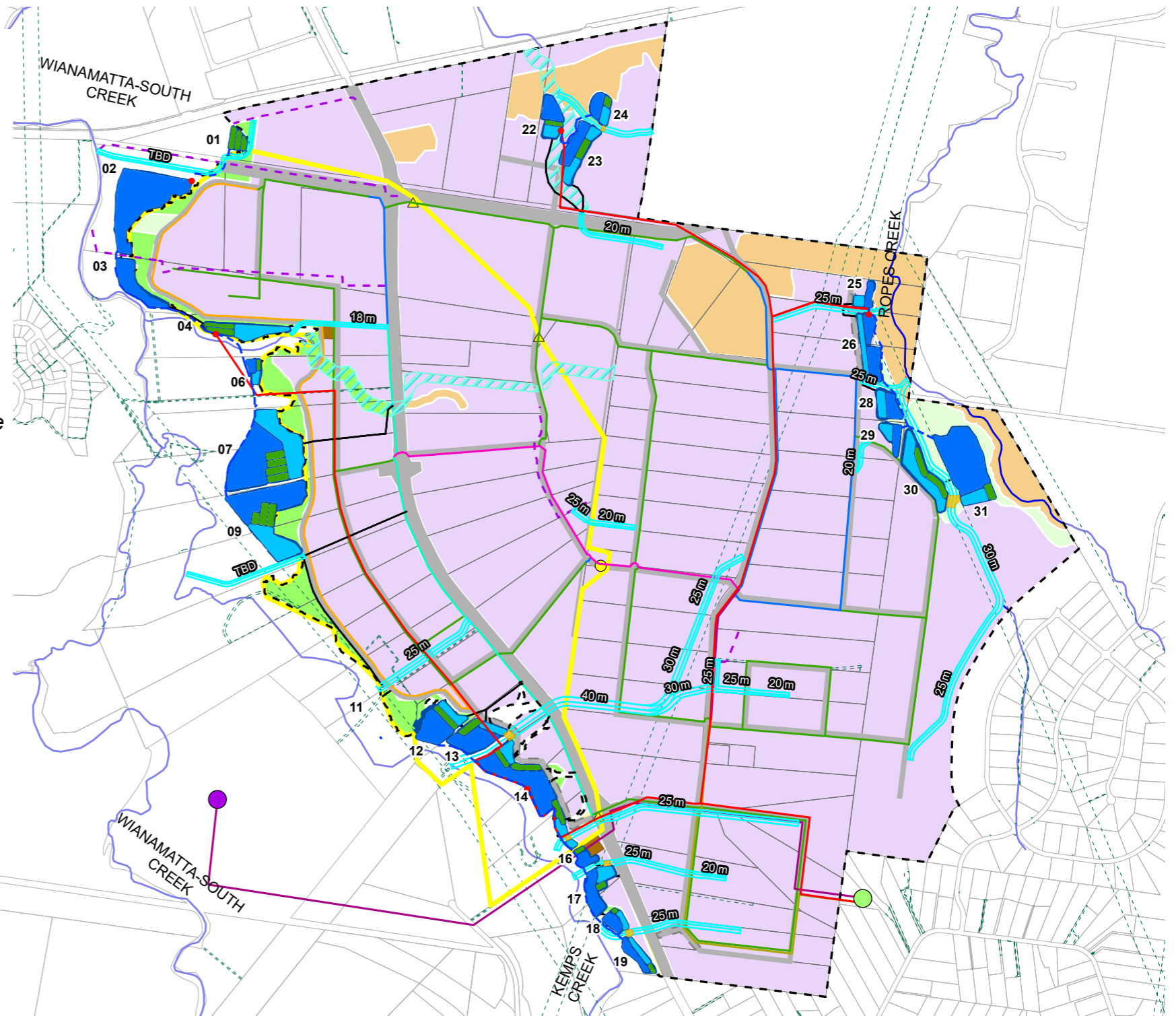
The Scheme Plan was developed in line with NSW Government planning requirements and ensures that development complies with NSW Government waterway objectives and stormwater targets specified in the Mamre Road Precinct Development Control Plan.

This infrastructure will also support the NSW Governments Western Parkland City Vision for greening and cooling. Elements of the scheme form part of the blue green infrastructure framework.

The key elements of the Mamre Road Precinct Stormwater Scheme Plan to address the stormwater targets/requirements (service levels) within section 2.4 of the Development Control plan are:

- Naturalised trunk drainage channels for stormwater conveyance as well as ecological and social benefits
- Regional stormwater systems to achieve both the stormwater quality and quantity targets, including:
 - basins that include constructed wetlands, bioretention systems and storage ponds
 - stormwater harvesting and distribution network that includes gravity and pressure mains, pumps, final treatment plant, reservoir, and recycled water (purple pipe) distribution network.

The Stormwater Scheme Plan is a conceptual layout that has been refined following public and stakeholder feedback. The infrastructure sizing and locations are fixed from this point with exception of minor modifications subject to Sydney Water approval and assets identified as indicative on the plan.



<ul style="list-style-type: none"> Mamre Road Precinct Boundary Existing Lot Boundary Waterways Existing Easement Indicative Roads (DPE) Indicative Road Realignment Indicative Private Drainage Asset Indicative Wastewater Pumping Station AWRC 	Land Zoning <ul style="list-style-type: none"> C2 Environmental Conservation IN1 General Industrial RE1 Public Recreation RE2 Private Recreation SP2 Infrastructure Proposed Recycled Water Infrastructure <ul style="list-style-type: none"> Pressure Zone Boundary Pressure Zone Boundary Valves 	<ul style="list-style-type: none"> PRV Location Indicative Recycled Water Mains <ul style="list-style-type: none"> DN100 DN150 DN200 DN250 DN300 DN375 DN450 	Proposed Stormwater Collection and Harvesting Infrastructure <ul style="list-style-type: none"> Wetland Bioretention Storage Pond Online Sediment Basins Proposed Trunk Drainage <ul style="list-style-type: none"> Naturalised Channel Alignment Minimum Required Trunk Drainage Corridor Width Labels Waterways with Riparian Corridor Diversion Pipes 	Proposed Treatment Systems <ul style="list-style-type: none"> Wetland Bioretention Storage Pond Online Sediment Basins 	Proposed Recirculation Infrastructure <ul style="list-style-type: none"> Indicative Stormwater Gravity Main Indicative Stormwater Rising Main Indicative Harvesting Pump Location Indicative Distribution Reservoir Location 	
--	---	---	--	---	---	--

Source: Aurecon, Sydney Water, LPI, DCCEEW, ESRI

Date: 20/05/2024



Projection: GDA 1994 MGA Zone 56

MAMRE ROAD PRECINCT INTEGRATED STORMWATER SCHEME PLAN

MAY 2024

