

<b>Name of wastewater system</b>	Bombo Wastewater Network
<b>Map of Network</b>	<a href="https://www.sydneywater.com.au/SW/water-the-environment/how-we-manage-sydney-s-water/wastewater-network/index.htm">https://www.sydneywater.com.au/SW/water-the-environment/how-we-manage-sydney-s-water/wastewater-network/index.htm</a>

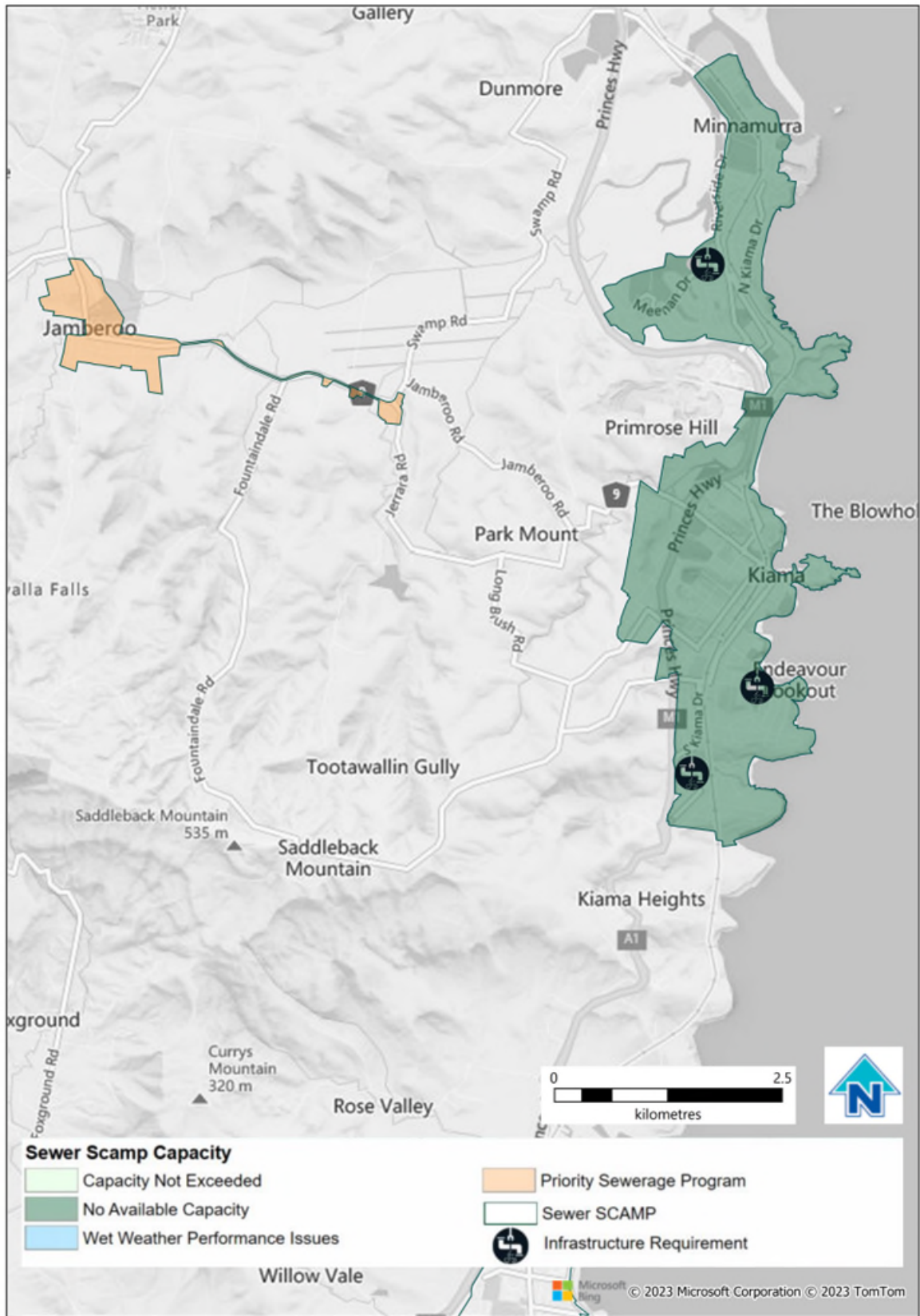
System Summary	Projected			
	2026	2031	2041	2051
Average dry weather flow (ML/d)	4.26	4.28	4.28	4.28

Infrastructure requirement and Capacity Constraints			
Planning Horizon	Asset Class	Investment Driver	Approximate Capital Cost (\$m)
2026	Wastewater Network Pumping	Growth	\$11.4M
2026	Wastewater Network Storage	Growth	\$1M
2026	Wastewater Network System	Growth	\$8.4M
2026	Wastewater Network Wastewater main	Growth	\$0.7M

Information sources, where publicly available
N/A (not publicly available)

Further investigations
Refer to Growth Servicing Plan 2022-2027:
<a href="https://www.sydneywater.com.au/plumbing-building-developing/developing/growth-servicing-plan.html">https://www.sydneywater.com.au/plumbing-building-developing/developing/growth-servicing-plan.html</a>

\*Approximated storage is used as an indicator of system upgrade requirements, but these would be subjected to an options assessment to identify a preferred solution.



© June 2023 Sydney Water  
 While Sydney Water has made every effort to provide information that is up to date, this information can be affected by many factors and is provided as a guide only. Sydney Water makes no representation, warranty, undertaking or guarantee (express or implied) that the information provided in this document is accurate, reliable or complete.