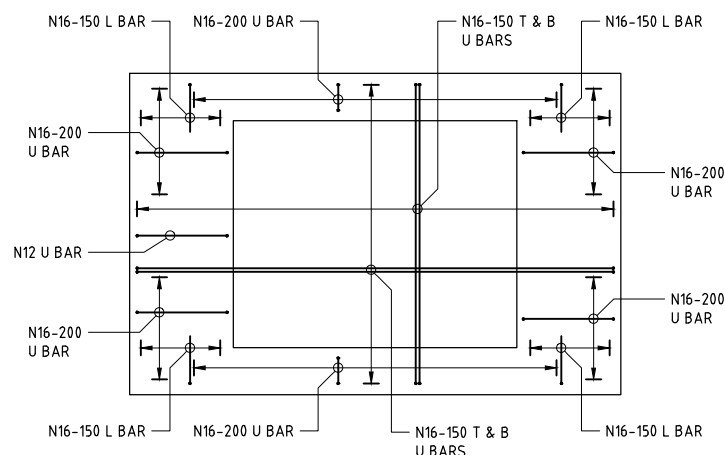


ARRANGEMENT 1 - TYPICAL WALL REINFORCEMENT PLAN

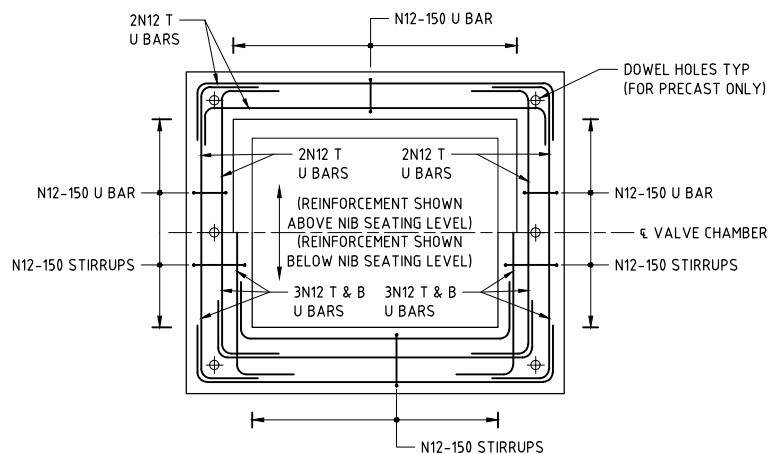
SCALE 1:20



BASE SLAB REINFORCEMENT LAYOUT

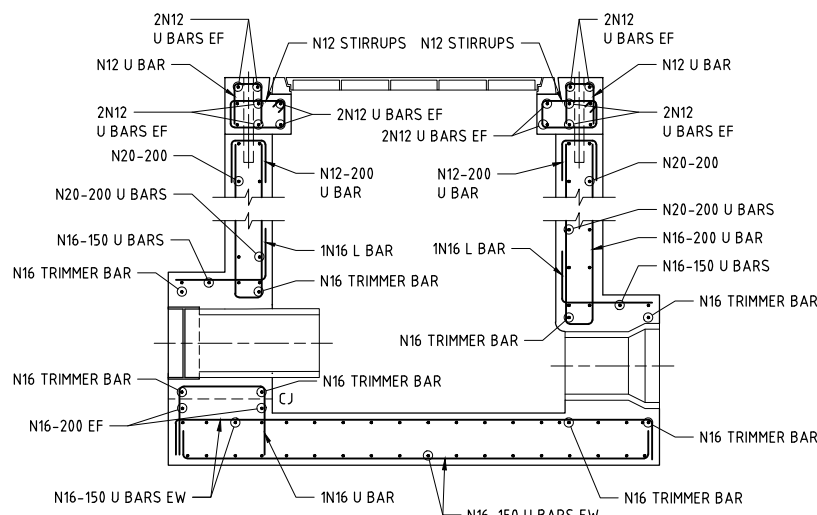
(SECTION JUST BELOW PIPE INVERTS)

SCALE 1:20



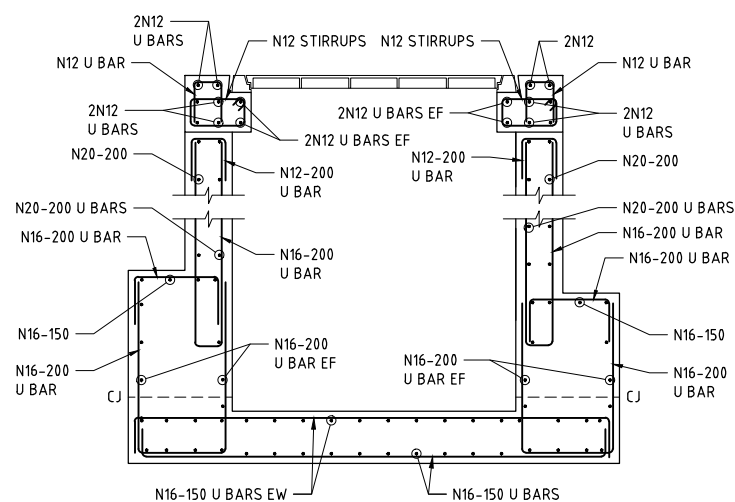
ROOF SLAB REINFORCEMENT LAYOUT (FOR BOTH PRECAST OR CAST IN-SITU)

SCALE 1:20

REINFORCEMENT IS SYMMETRICAL ABOUT VALVE CHAMBER  
REFER TO NOTE 5

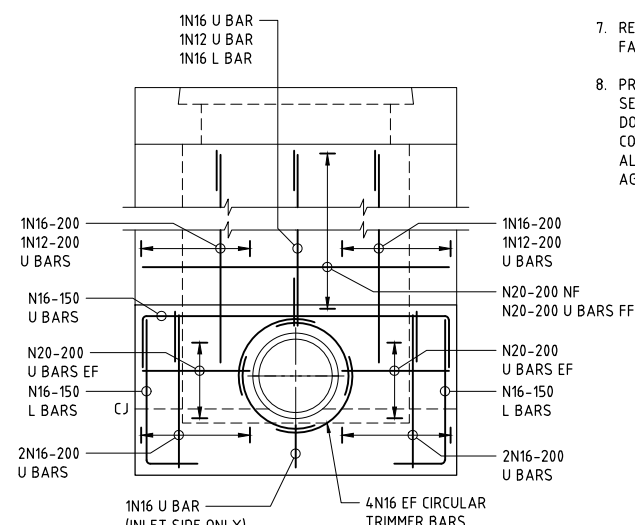
SECTION 1

SCALE 1:20



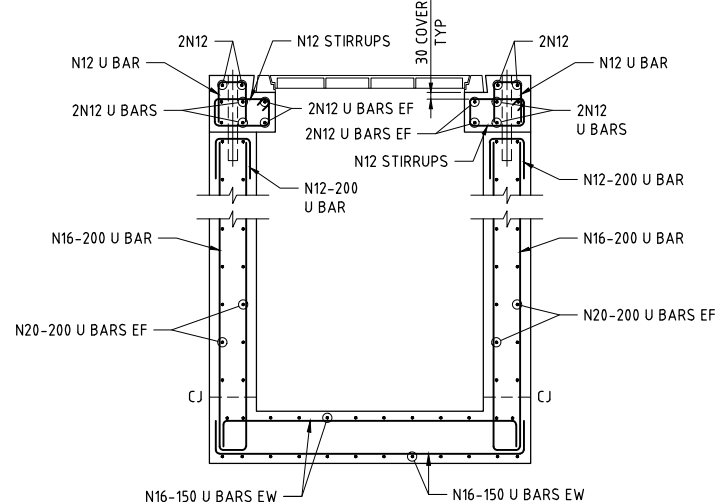
SECTION 2

SCALE 1:20



SECTION 3

SCALE 1:20

REINFORCEMENT TO ROOF SLAB NOT SHOWN FOR CLARITY.  
REINFORCEMENT IN BASE SLAB SHOWN IN SECTION 2 AND 4, NOT REPEATED FOR CLARITY.

SECTION 4

SCALE 1:20

## NOTES:

- THIS DRAWING SHALL BE READ IN CONJUNCTION WITH THE FOLLOWING:
  - DTC/2000 - MAINTENANCE HOLES, CONSTRUCTION NOTES
  - DTC/2251 - MAINTENANCE HOLES, PRECAST DN1050-DN1200, NOTES, INSTRUCTIONS AND DRAWING LIST
  - DTC/2401 - EMERGENCY RELIEF STRUCTURE: INSTRUCTIONS, GENERAL NOTES & DRAWING LIST
  - DTC/2402 - EMERGENCY RELIEF STRUCTURE: ARRANGEMENT 1 - NEW VALVE CHAMBER, GA & SECTION
- AN AMOUNT OF REINFORCEMENT EQUIVALENT TO THAT TRUNCATED BY OPENINGS SHALL BE ADDED LOCALLY TO THE SIDES OF THE OPENING AT A SPACING OF 4 x BAR DIAMETER.
- REFER TO DTC/2000 FOR CAST IN-SITU CONCRETE AND REINFORCEMENT NOTES.
- REFER TO DTC/2251 FOR PRECAST CONCRETE AND REINFORCEMENT NOTES.
- REFER TO DETAIL 'G' OR 'H' ON DTC/2409 FOR TYPICAL ROOF CONNECTING TO CHAMBER WALL DETAIL.
- REQUIRED CONCRETE CLASS S40.
- REQUIRED CONCRETE COVER TO REINFORCEMENT: INTERNAL FACES 75 mm, FACES AGAINST GROUND 45 mm.
- PREPARATION OF SURFACE AT CONSTRUCTION JOINTS TO COMPLY WITH SECTION C3.13.2 OF TECHNICAL SPECIFICATION - CIVIL: DOCUMENT No. CPDMS0023. THE SURFACES OF PREVIOUSLY PLACED CONCRETE AT CONSTRUCTION JOINTS MUST BE ROUGHENED BY REMOVING ALL LOOSE AGGREGATE, LAITANCE AND SUFFICIENT MORTAR TO EXPOSE AGGREGATES TO A DEPTH OF 3 mm.

**Sydney**  
**WATER**

© COPYRIGHT

STATE OF NEW SOUTH WALES THROUGH SYDNEY  
WATER CORPORATION. ALL RIGHTS RESERVED

APPROVED

DINESH DINESHHARAN  
MANAGER - ENGINEERING

ENGINEERING &amp; TECHNICAL SUPPORT

DEEMED TO COMPLY DRAWINGS

**EMERGENCY RELIEF STRUCTURE**  
**ARRANGEMENT 1 - NEW VALVE CHAMBER**  
**STRUCTURAL REINFORCEMENT DETAILS****DTC****2410**

ISSUE DATE

**A****14/09/21**