

Name of water delivery system	Prospect South Water Delivery System
Name of distribution system	Cecil Park Water Distribution System Liverpool Water Distribution System Wetherill Park Water Distribution System Minchinbury Water Distribution System
Map of Network	https://www.sydneywater.com.au/SW/water-the-environment/how-we-manage-sydney-s-water/water-network/index.htm

System Summary	Projected			
	2026	2031	2041	2051
Demand MDD (ML/d)				
Cecil Park	129.8	257.0	349.9	370.3
Bonnyrigg	22.9	23.3	24.2	24.8
Carnes Hill	13.6	13.8	14.1	14.3
Liverpool, Mt Pritchard, Hammondville, and Voyager Point	82.4	91.6	103.6	113.4
Wetherill Park	19.5	20.2	20.9	21.3
Prestons	7.3	7.6	8.3	9.0
Minchinbury and Minchinbury Elevated	59.6	64.8	69.6	71.8

Infrastructure requirement and Capacity Constraints			
Planning Horizon	Infrastructure and Location	Purpose	Approximate Capital Cost (\$m)
2023	Water Network Watermain	Growth	\$15.7M
2025	Water Network System	Growth	\$30.8M
2025	Water Network Watermain	Growth	\$78.5M
2026	Water Network Pumping	Growth	\$1.9M
2026	Water Network Watermain	Growth	\$5.7M
2027	Water Network Watermain	Growth	\$1.2M
2028	Water Network Pumping	Growth	\$11M
2028	Water Network Watermain	Growth	\$6.6M
2030	Water Network System	Growth	\$1.8M
2030	Water Network Watermain	Growth	\$52.4M
2031	Water Network Watermain	Growth	\$14.M
2036	Water Network Watermain	Growth	\$2.06M

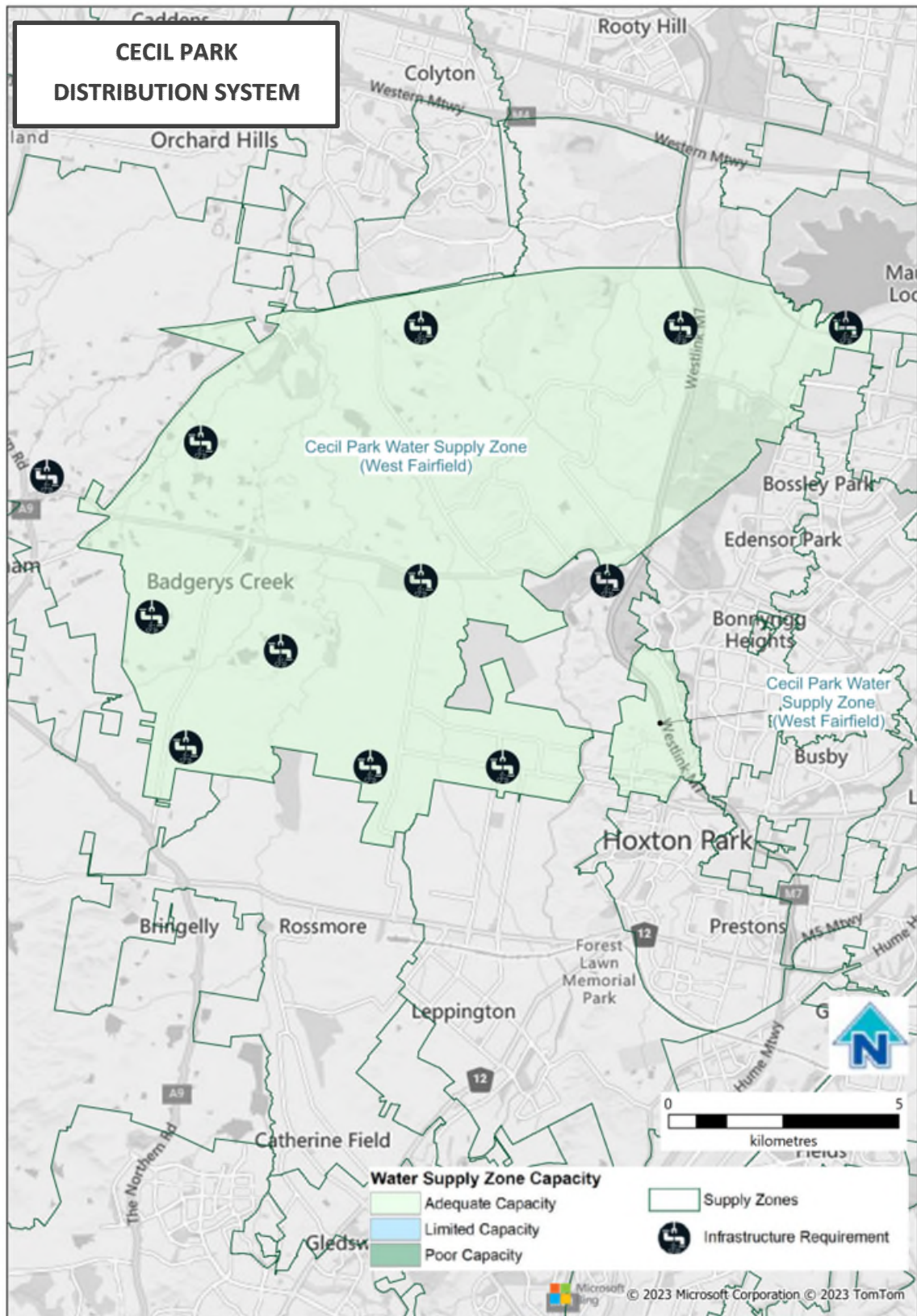
Information sources, where publicly available
N/A (not publicly available)

Further investigations
Refer to Growth Servicing Plan 2022-2027: https://www.sydneywater.com.au/plumbing-building-developing/developing/growth-servicing-plan.html

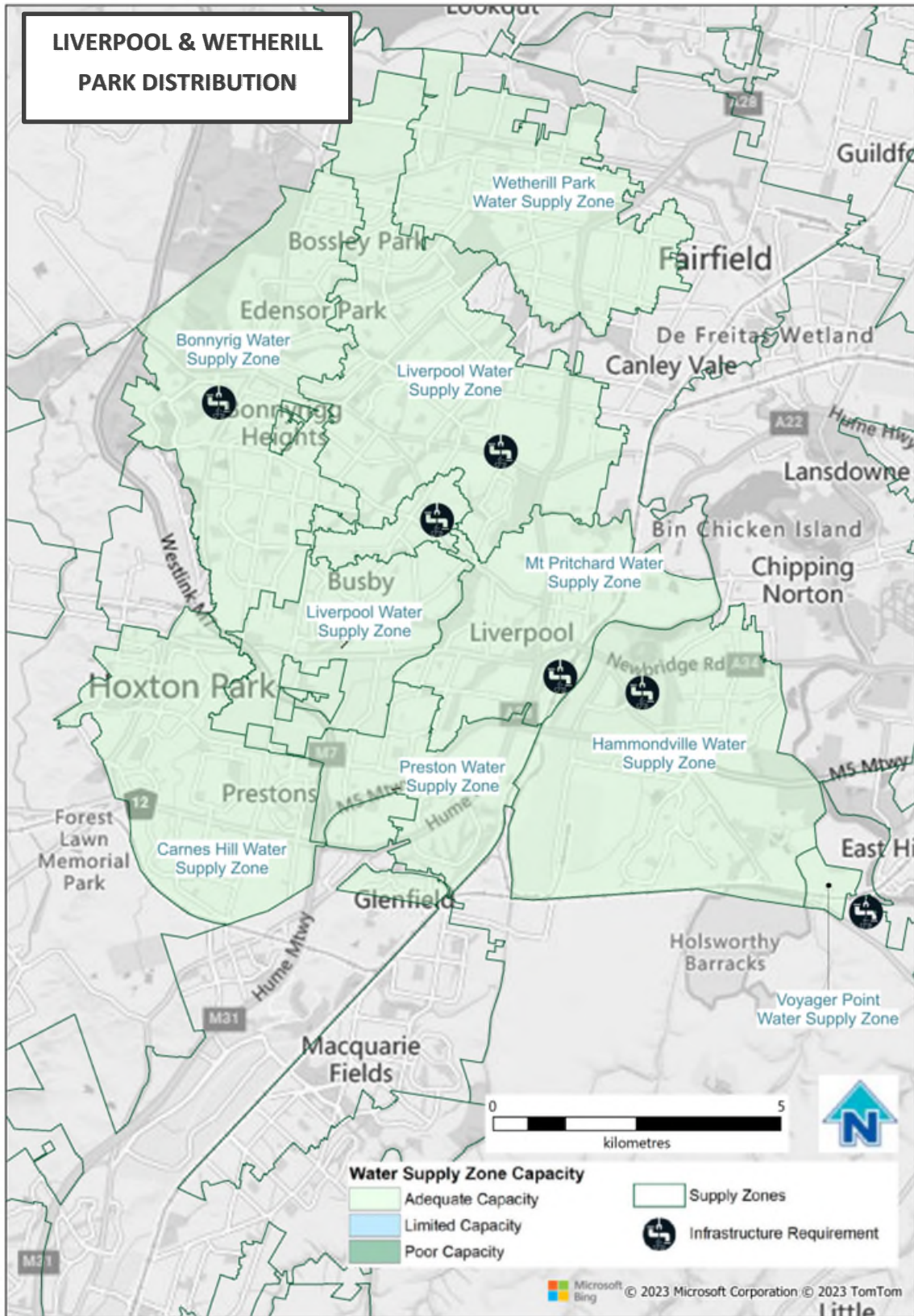
© June 2023 Sydney Water

While Sydney Water has made every effort to provide information that is up to date, this information can be affected by many factors and is provided as a guide only. Sydney Water makes no representation, warranty, undertaking or guarantee (express or implied) that the information provided in this document is accurate, reliable or complete.

Date published: 30 June 2023



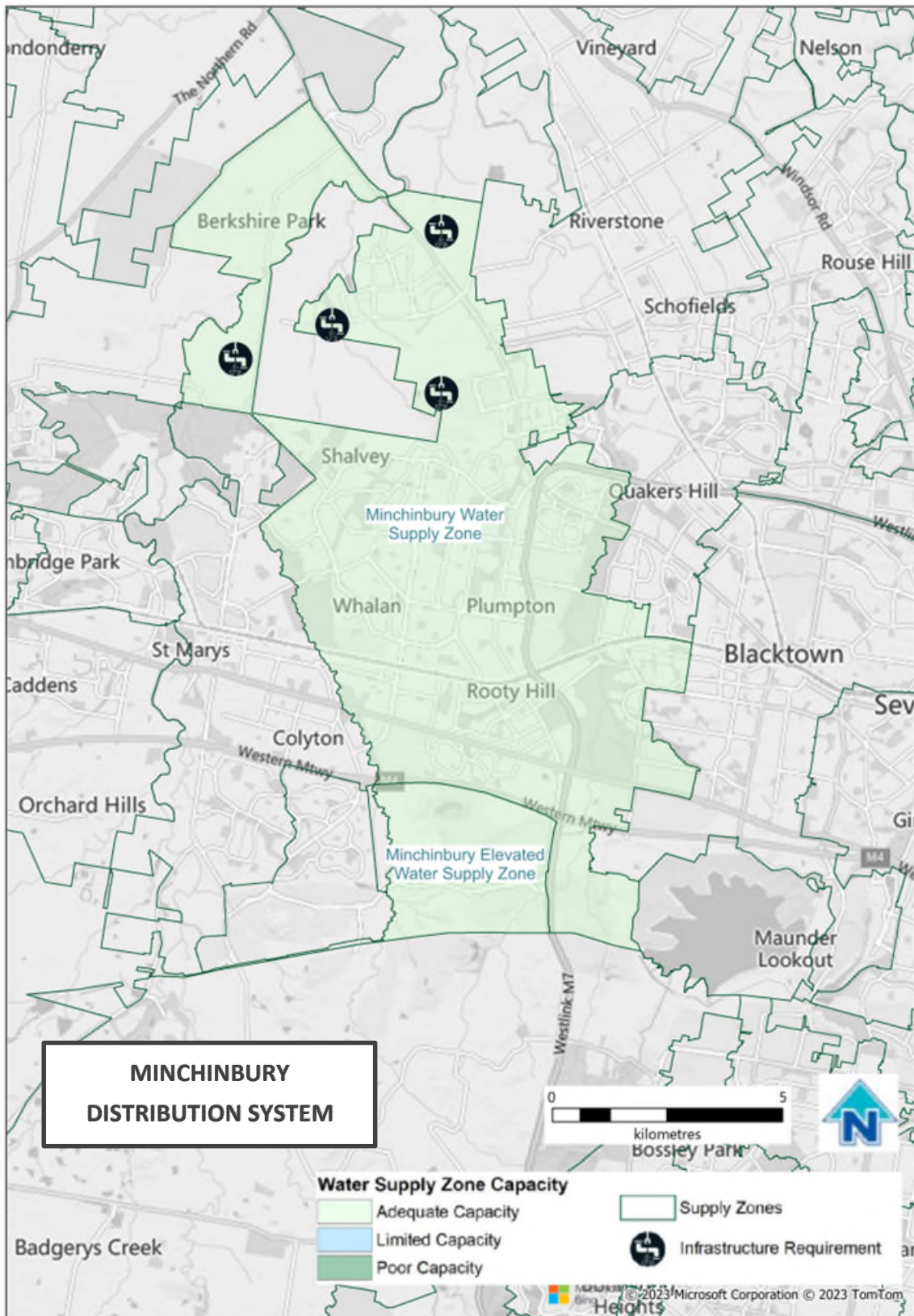
© June 2023 Sydney Water
While Sydney Water has made every effort to provide information that is up to date, this information can be affected by many factors and is provided as a guide only. Sydney Water makes no representation, warranty, undertaking or guarantee (express or implied) that the information provided in this document is accurate, reliable or complete.



© June 2023 Sydney Water

While Sydney Water has made every effort to provide information that is up to date, this information can be affected by many factors and is provided as a guide only. Sydney Water makes no representation, warranty, undertaking or guarantee (express or implied) that the information provided in this document is accurate, reliable or complete.

Date published: 30 June 2023



© June 2023 Sydney Water
While Sydney Water has made every effort to provide information that is up to date, this information can be affected by many factors and is provided as a guide only. Sydney Water makes no representation, warranty, undertaking or guarantee (express or implied) that the information provided in this document is accurate, reliable or complete.