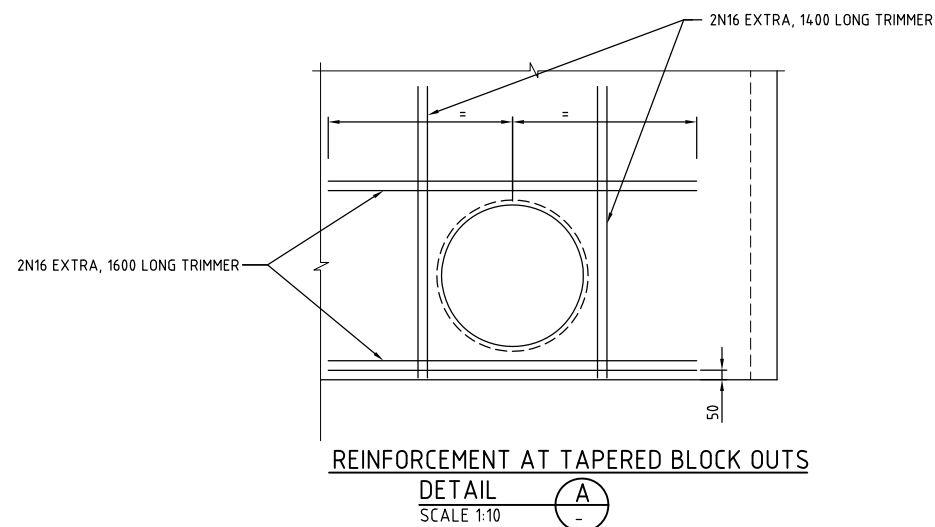
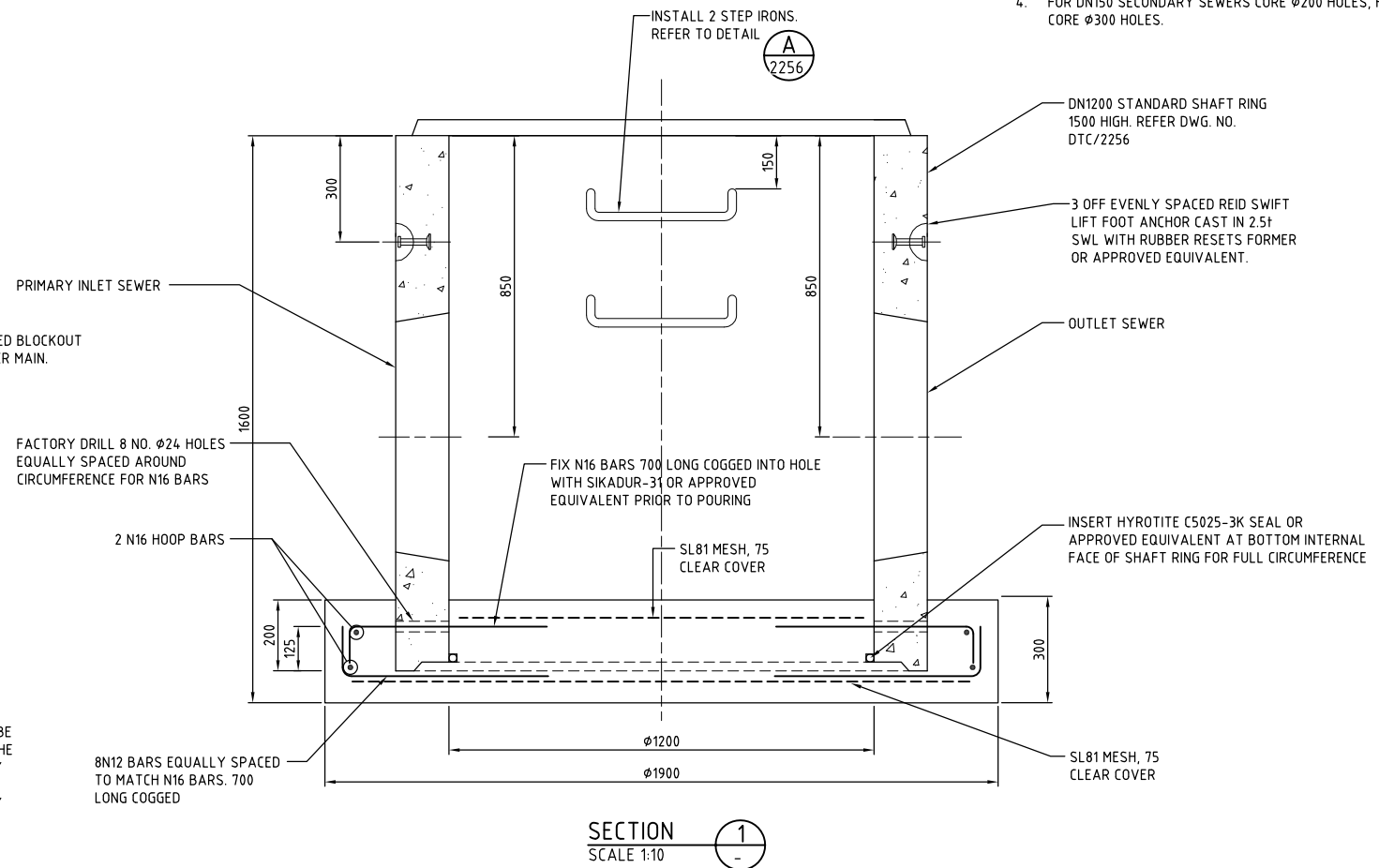
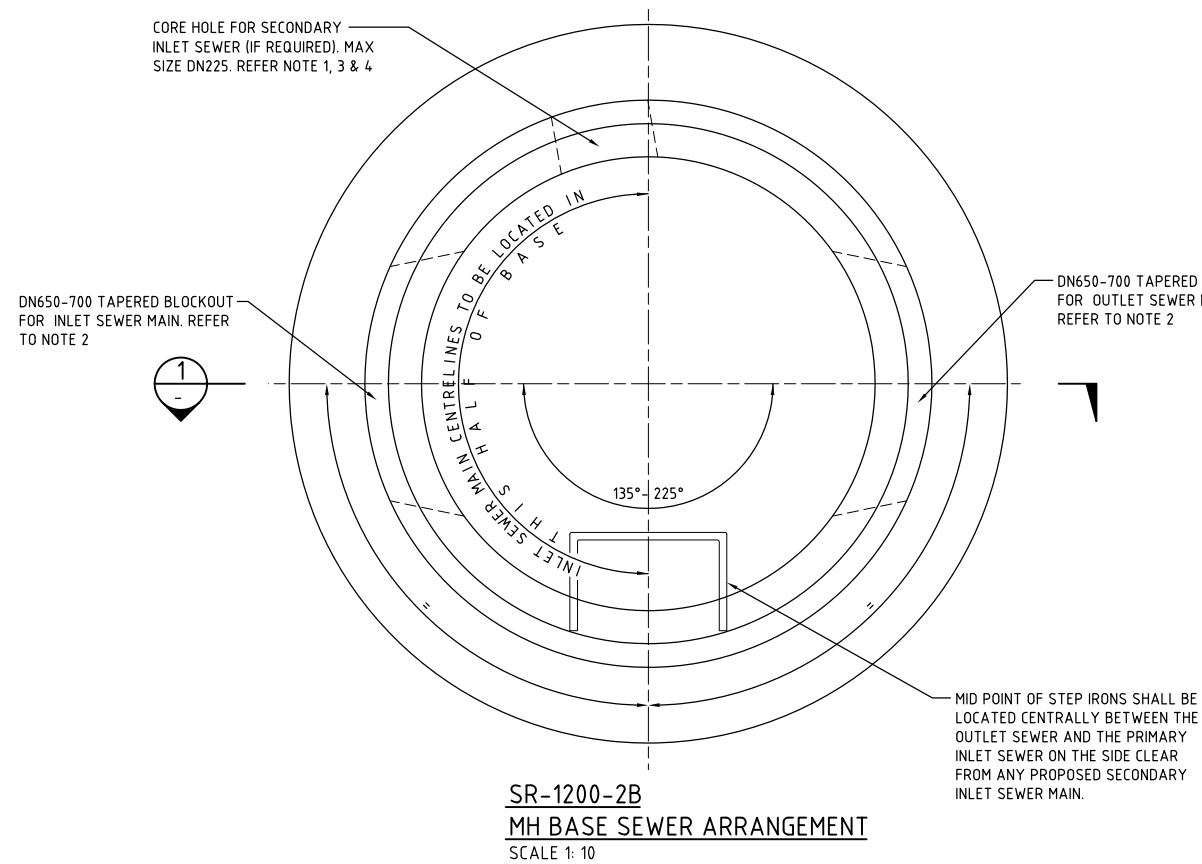


## NOTES:

1. MINIMUM ANGLE BETWEEN CENTRE LINE OF INLET SEWERS IS 75°.
2. INSTALLATION OF THE INLET AND OUTLET SEWER AND BENCHING MAY BE COMPLETED IN THE FACTORY.
3. ONE SECONDARY SEWER INLET ( $\leq$  DN225) MAY BE INSTALLED ON SITE AFTER PLACEMENT OF THE BASE SLAB.
4. FOR DN150 SECONDARY SEWERS CORE  $\varnothing$ 200 HOLES, FOR DN225 SECONDARY SEWERS CORE  $\varnothing$ 300 HOLES.



**Sydney**  
**WATER**

© COPYRIGHT  
STATE OF NEW SOUTH WALES THROUGH SYDNEY  
WATER CORPORATION. ALL RIGHTS RESERVED

APPROVED

KEN WIGGINS  
MANAGER, E & ES

ENGINEERING & ENVIRONMENTAL SERVICES

A  
LETTER

ORIGINAL ISSUE

DETAILS OF ISSUE / AMENDMENT

KW

22/06/15  
APP'D DATE

DEEMED TO COMPLY DRAWINGS

DN1200 MAINTENANCE HOLES - PRECAST  
BASE SLAB FOR DN300 - DN450 SEWERS  
GENERAL PLAN AND REINFORCEMENT

DTC

2258

ISSUE

DATE

A

22/06/15