

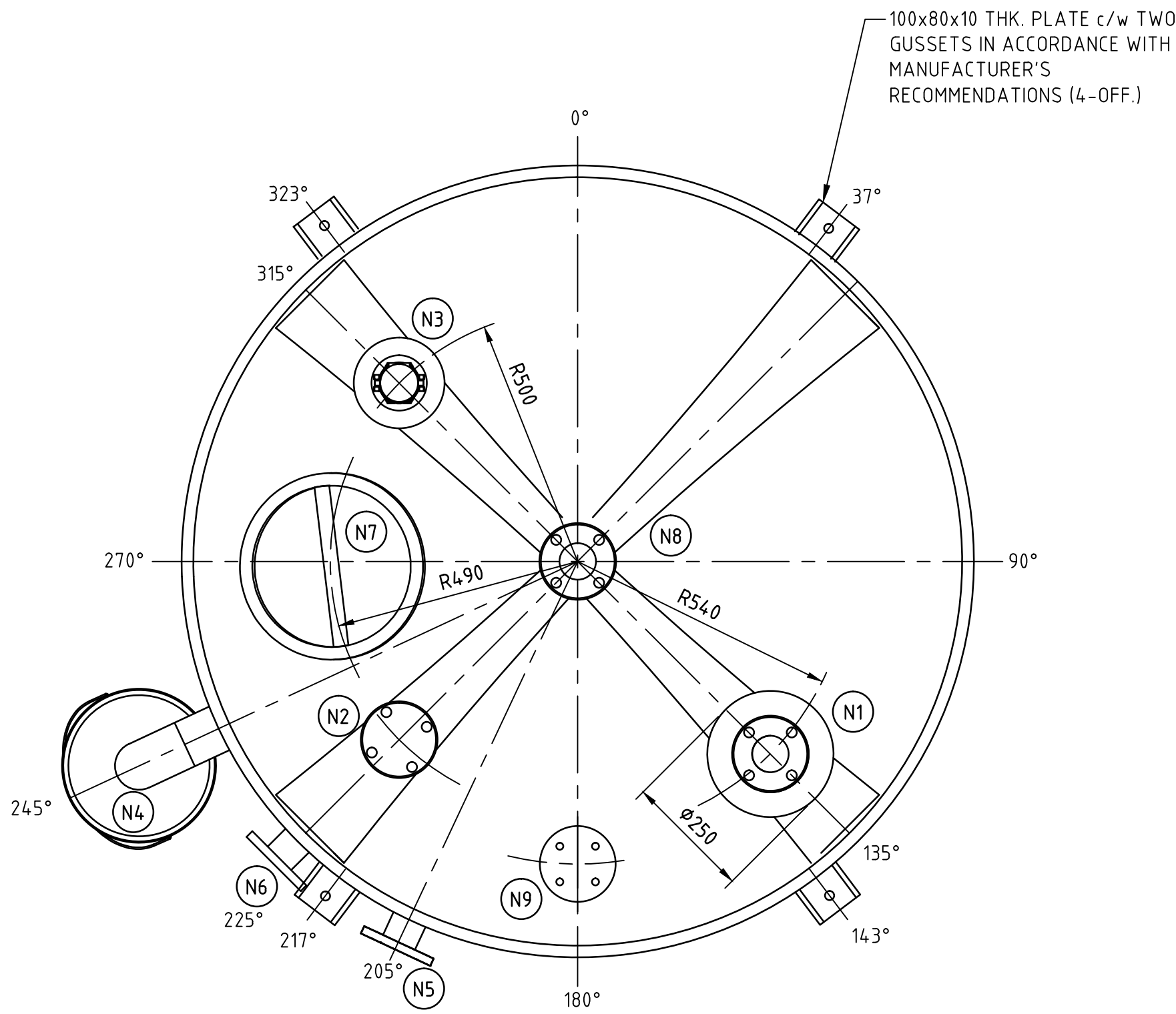
STORAGE TANK NOTES:

- 1. DURAPLAS POLYETHYLENE STORAGE TANK (OR APPROVED EQUIV.)
 - NOMINAL CAPACITY: 3,000L
- 2. TANK TO BE DESIGNED & MANUFACTURED FROM ROTOMOULDED TRANSLUCENT POLYETHYLENE AND SUITABLE FOR SODIUM HYPOCHLORITE. TO BE DESIGNED AND CONSTRUCTED IN ACCORDANCE WITH AS/NZS 4766.
- 4. ALL NOZZLES TO BE BACK TO BACK WELDED AND SUPPLIED WITH GUSSETS, REFER DETAIL-C.
- 5. SUPPLIER TO PROVIDE CERTIFICATION OF COMPLIANCE OF STORAGE TANK TO AS/NZS 4766.

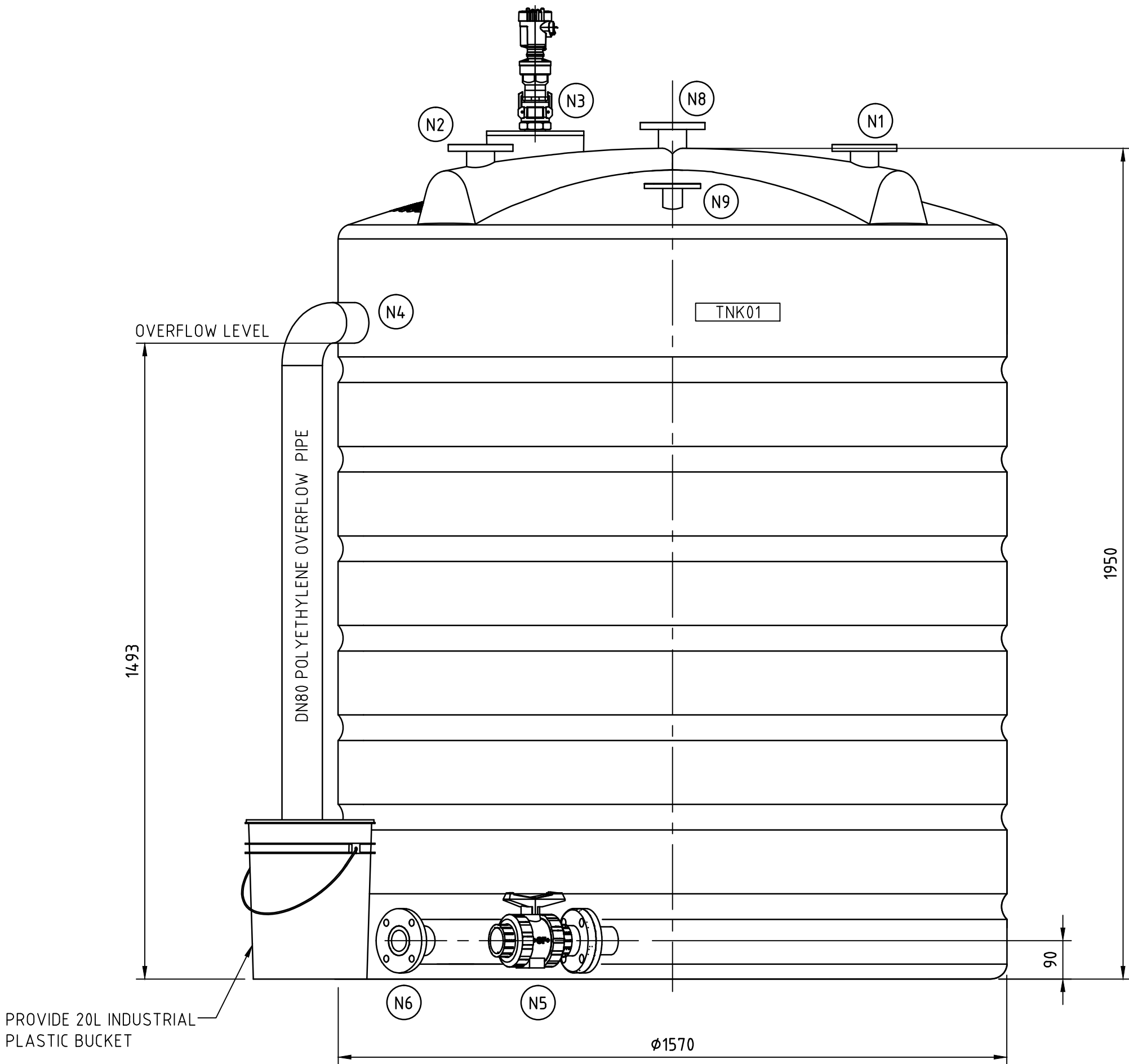
THIS DRAWING MAY ONLY BE USED IN THE COURSE OF AND FOR THE PURPOSE OF CREATING SYDNEY WATER ASSETS. USE THIS DRAWING WITH CARE. YOU ARE RESPONSIBLE TO APPLY THE WORK SHOWN IN THIS DRAWING CORRECTLY IN THE CIRCUMSTANCES OF YOUR PROJECT. YOU MUST ENSURE THE WORK IS FIT FOR PURPOSE AND WILL PERFORM ITS INTENDED FUNCTION AS REQUIRED.

NOTES:

- 1. FOR GENERAL NOTES REFER TO DRG No. DTC-7002.

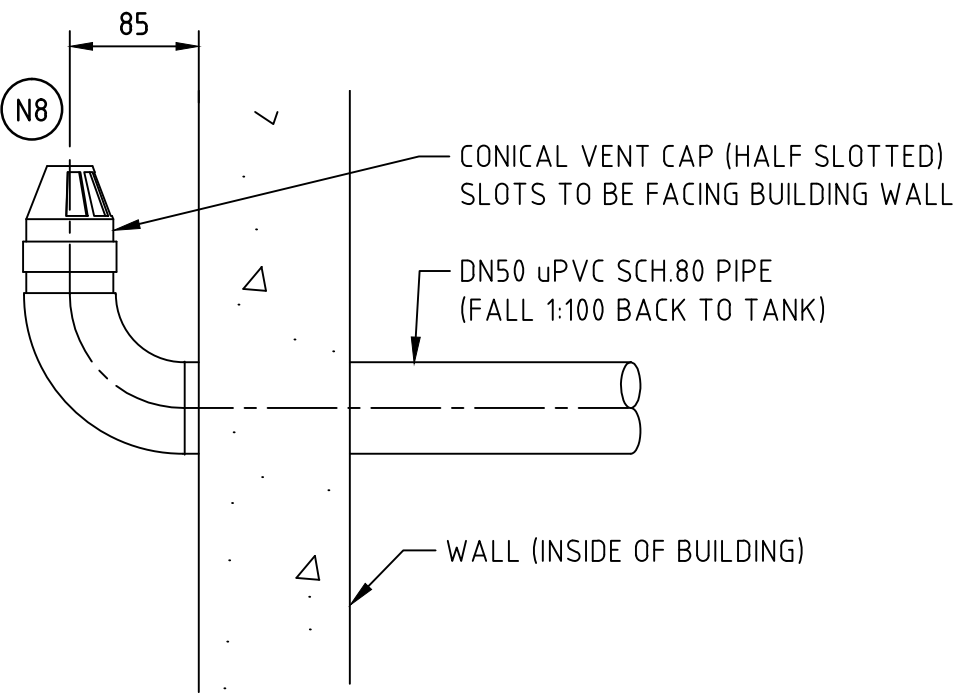


PLAN

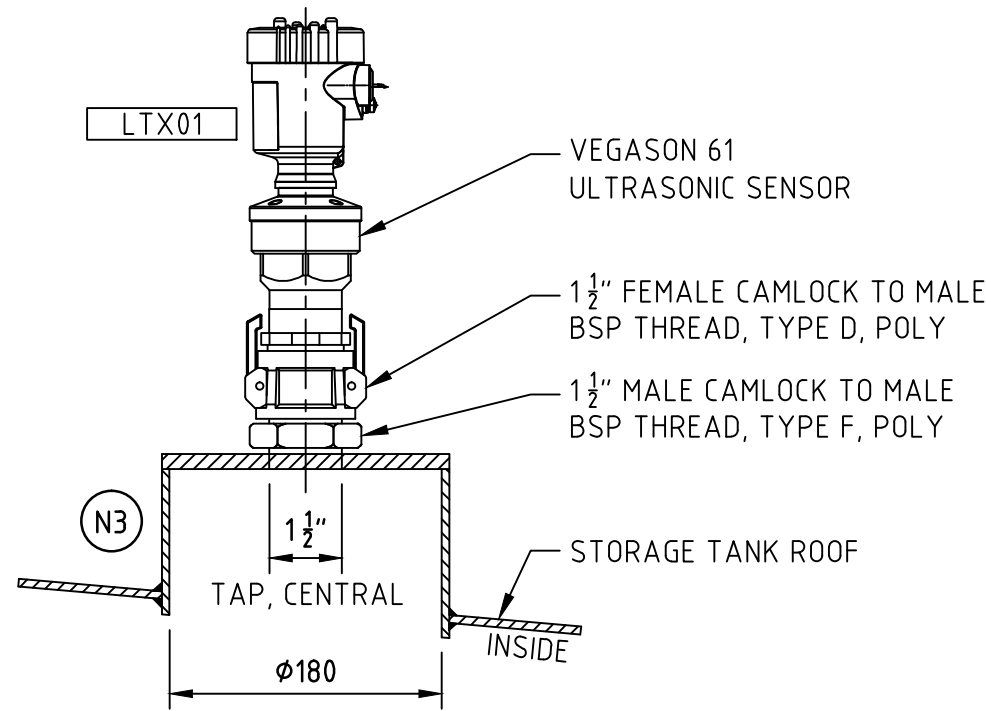


ELEVATION

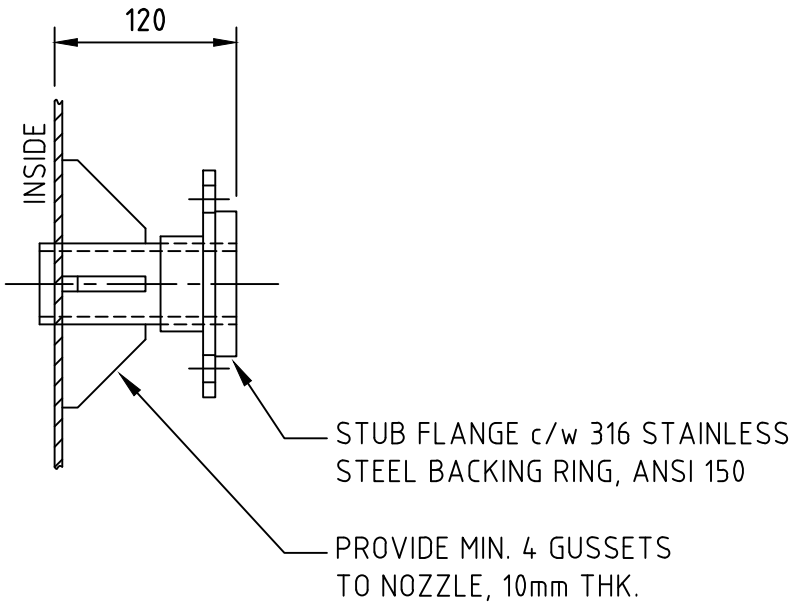
NOZZLE	SIZE	SCHEDULE	CONNECTION	RATING	TYPE	DESCRIPTION	REMARKS
N1	DN50	80	FLANGED	ANSI 150	FF	INLET	
N2	DN50	80	FLANGED	ANSI 150	FF	SPARE	COMPLETE WITH BLIND FLANGE
N3	ø180	80	-	-	-	LEVEL TRANSMITTER	REFER DETAIL-B
N4	DN80	80	PIPE	-	-	OVERFLOW	
N5	DN50	80	FLANGED	ANSI 150	FF	DRAIN	
N6	DN50	80	FLANGED	ANSI 150	FF	OUTLET	
N7	ø450	-	LID	CLASS A	-	MANHOLE	15kg MAX. WEIGHT
N8	DN50	80	FLANGED	ANSI 150	FF	VENT	REFER DETAIL-A
N9	DN40	80	FLANGED	ANSI 150	FF	SPARE INLET (CARRIER WATER)	COMPLETE WITH BLIND FLANGE



DETAIL A
SCALE 1:5
VENT DETAIL



DETAIL B
SCALE 1:5
ULTRASONIC SENSOR MOUNTING



DETAIL C
SCALE 1:5
TYPICAL STORAGE TANK NOZZLE

Sydney
WATER

©COPYRIGHT
STATE OF NEW SOUTH WALES THROUGH SYDNEY
WATER CORPORATION. ALL RIGHTS RESERVED

APPROVED MAR 2017

KEN WIGGINS
MANAGER, E & ES

ENGINEERING & ENVIRONMENTAL SERVICES

A
LETTER

ORIGINAL ISSUE

DETAILS OF AMENDMENT

KW

17/03/17

APP'D

DATE

DEEMED TO COMPLY DRAWINGS

3kL + 7kL RECHLORINATION PLANT
SODIUM HYPOCHLORITE
3kL STORAGE TANK DETAILS

DTC

7151