

Prospect East Water Delivery Network Capacity Report

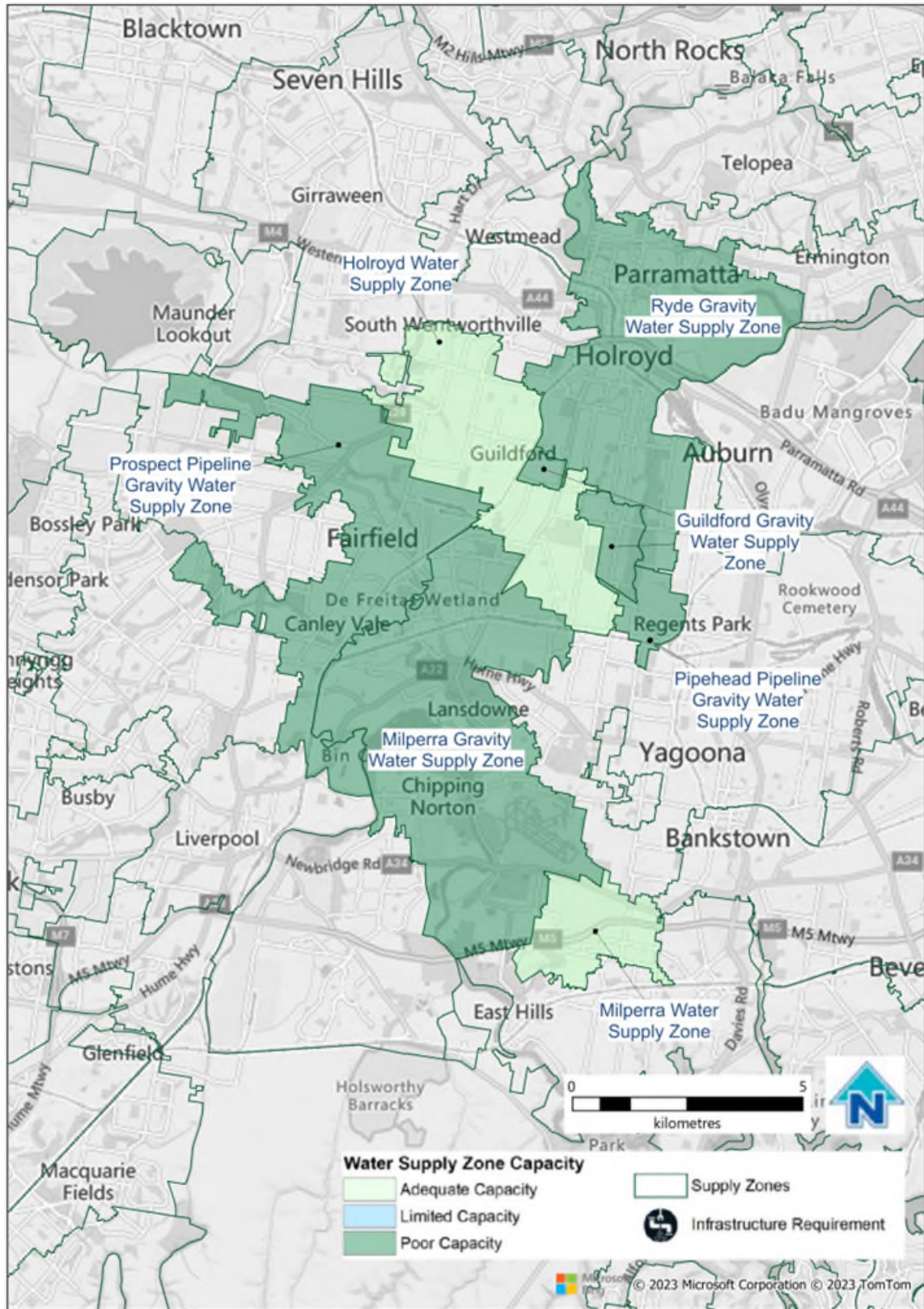
Name of water delivery system	Prospect East Water Delivery System
Name of distribution system	Ryde Gravity Water Distribution System Holroyd Water Distribution System Prospect Pipeline Water Distribution System Pipehead Pipeline Water Distribution System
Map of Network	https://www.sydneywater.com.au/SW/water-the-environment/how-we-manage-sydney-s-water/water-network/index.htm

System Summary	Projected			
	2026	2031	2041	2051
Demand MDD (ML/d)				
Ryde Gravity	51.8	59.1	68.6	74.2
Holroyd	19.6	20.4	21.8	23.3
Prospect Pipeline Gravity and Guildford Gravity	33.7	36.7	39.8	41.3
Milperra and Milperra Gravity	27.1	29.7	32.1	33.6
Pipehead Pipeline Gravity	1.8			

Infrastructure requirement and Capacity Constraints			
Planning Horizon	Infrastructure and Location	Purpose	Approximate Capital Cost (\$m)
No investment plans proposed for the next ten years			

Information sources, where publicly available
N/A (not publicly available)

Further investigations
Refer to Growth Servicing Plan 2022-2027: https://www.sydneywater.com.au/plumbing-building-developing/developing/growth-servicing-plan.html



© June 2023 Sydney Water
While Sydney Water has made every effort to provide information that is up to date, this information can be affected by many factors and is provided as a guide only. Sydney Water makes no representation, warranty, undertaking or guarantee (express or implied) that the information provided in this document is accurate, reliable or complete.