

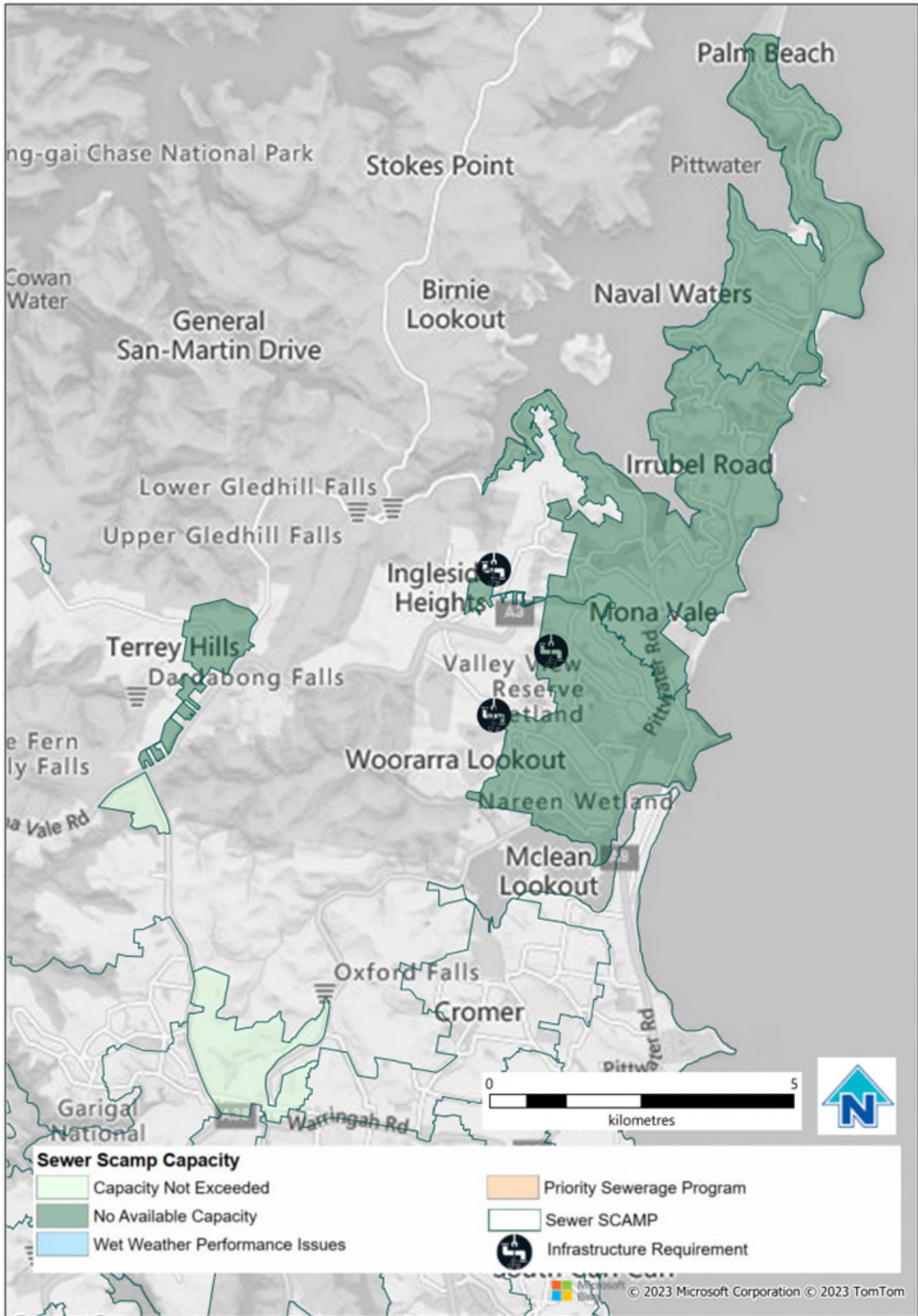
Name of wastewater system	Warriewood Wastewater Network
Map of Network	https://www.sydneywater.com.au/SW/water-the-environment/how-we-manage-sydney-s-water/wastewater-network/index.htm

System Summary	Projected			
	2026	2031	2041	2051
Average dry weather flow (ML/d)	15.5	16.3	16.9	17.2

Infrastructure requirement and Capacity Constraints			
Planning Horizon	Infrastructure and Location	Purpose	Approximate Capital Cost (\$m)
2026	Wastewater Network Storage	Growth	\$2.9M
2026	Wastewater Network Wastewater main	Growth	\$123.1M

Information sources, where publicly available
N/A (not publicly available)

Further investigations
Refer to Growth Servicing Plan 2022-2027:
https://www.sydneywater.com.au/plumbing-building-developing/developing/growth-servicing-plan.html



© June 2023 Sydney Water

While Sydney Water has made every effort to provide information that is up to date, this information can be affected by many factors and is provided as a guide only. Sydney Water makes no representation, warranty, undertaking or guarantee (express or implied) that the information provided in this document is accurate, reliable or complete.

Date published: 30 June 2023