

South West Growth Area drinking water services

We are planning new drinking water services to cater for future development in Austral, Leppington and Leppington North.

About our work

We're developing plans for new drinking water services to cater for growth in Sydney's south west. The proposed infrastructure is in two key areas:

Austral, Leppington and Leppington North (see Figure 1)

- water trunk mains (laid within the road reserve) to be delivered in stages by 2025.

Cecil Hills and Cecil Park (see Figure 2)

- new reservoir and pumping station within Sydney Water property at the Liverpool reservoir site (required by 2022)
- new pressure transfer main to transfer water supply from Liverpool reservoir to the existing Cecil Park reservoir via Western Sydney Parklands (required by 2022).

What we've done

In 2017, we engaged ENSure (a joint venture between Jacobs and GHD) to undertake an options assessment and identify a preferred option for new drinking water services.

Maps of the preferred options are shown in Figure 1 and Figure 2.

Next steps

The project will be completed in stages, keeping in time with development. Initial services are expected to be available by 2022.

Our next step is to engage a contractor to prepare a concept design and undertake an environmental assessment.

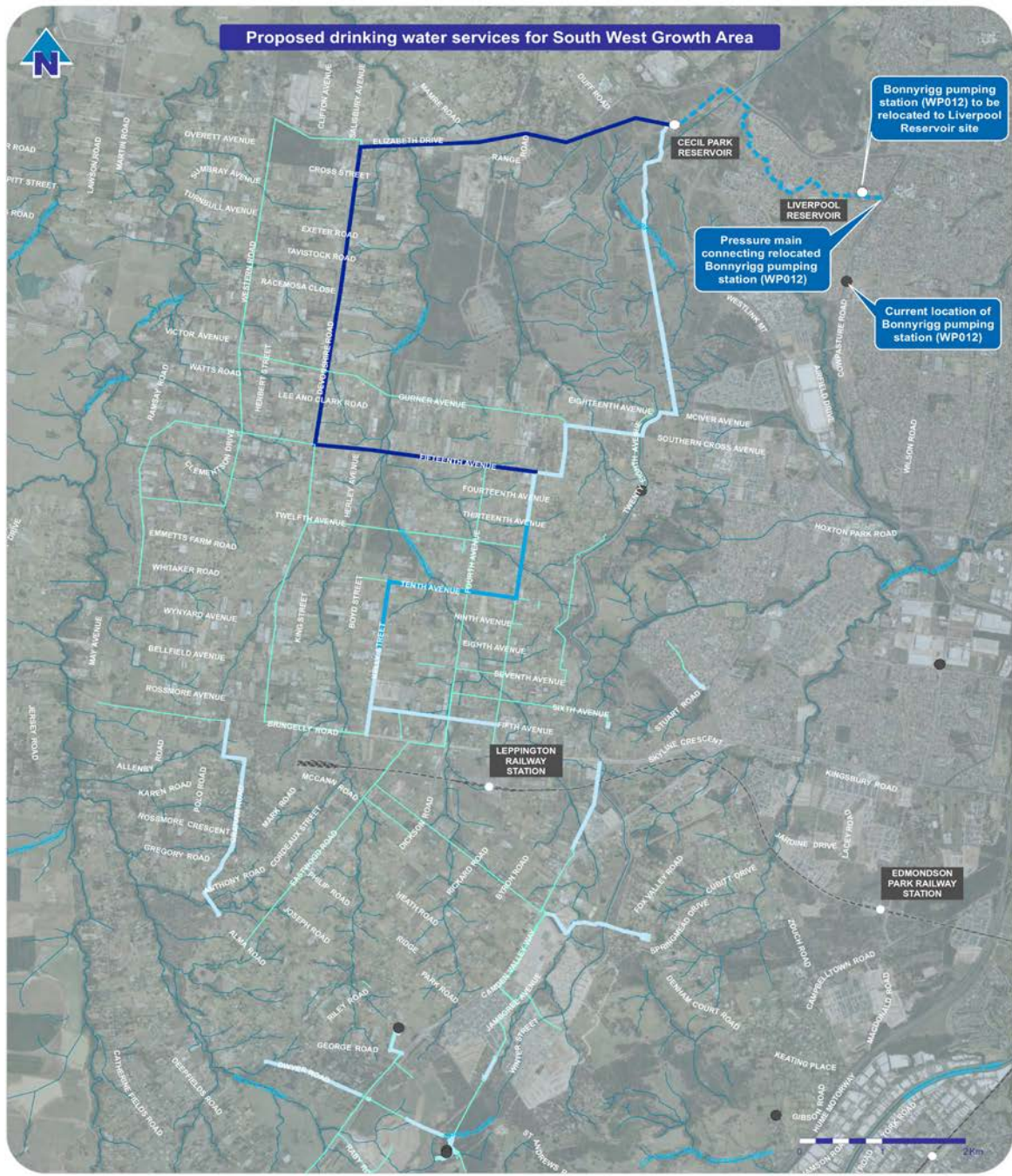
We'll keep landowners and key stakeholders informed as the project progresses.

Contact us

To learn more or provide feedback, contact us by:

- emailing swga@sydneywater.com.au
- calling 13 20 92



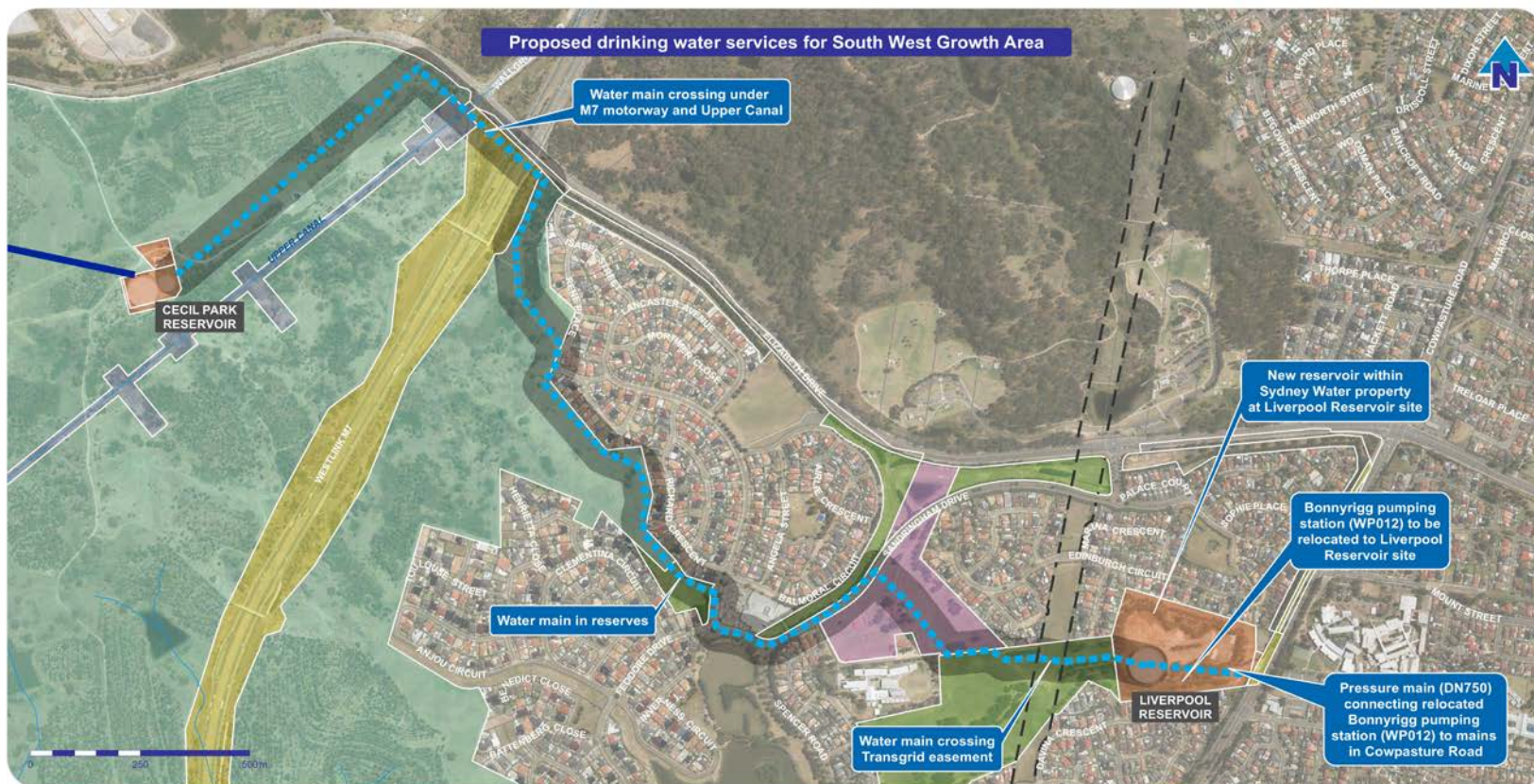


- LEGEND**
- Stage 1 water trunk mains (existing/under construction)
 - Stage 2 water trunk mains (required by 2022)
 - Stage 3 water trunk mains (required by 2025)
 - Future water trunk mains (over 300mm)
 - - - Proposed water transfer main (required by 2022)
 - Existing water pumping stations

Sydney Water is in the early planning stage for drinking water services in the South West Growth Area. The alignments shown on this map are indicative only and subject to change. Specific alignments will be confirmed during future design phases of the project and in consultation with key stakeholders.



Figure 1 Austral, Leppington and Leppington North Growth Areas.



LEGEND

- Proposed water transfer main (required by 2022)
- Stage 3 water trunk mains (required by 2025)
- Corridor for future drinking water pipelines
- Impacted properties
- Crown Lands
- Liverpool City Council
- Roads and Maritime Services
- Sydney Water
- Water NSW
- Western Sydney Parklands Trust

Sydney Water is in the early planning stage for drinking water services in the South West Growth Area. The alignments shown on this map are indicative only and subject to change. Specific alignments will be confirmed during future design phases of the project and in consultation with key stakeholders.



DATA SOURCES

ENSURE 2017, LPI 2017, AUSIMAGE 2018, SYDNEY WATER 2017.

A3
1:9,000

Figure 2 Cecil Hills and Cecil Park Growth Areas.