

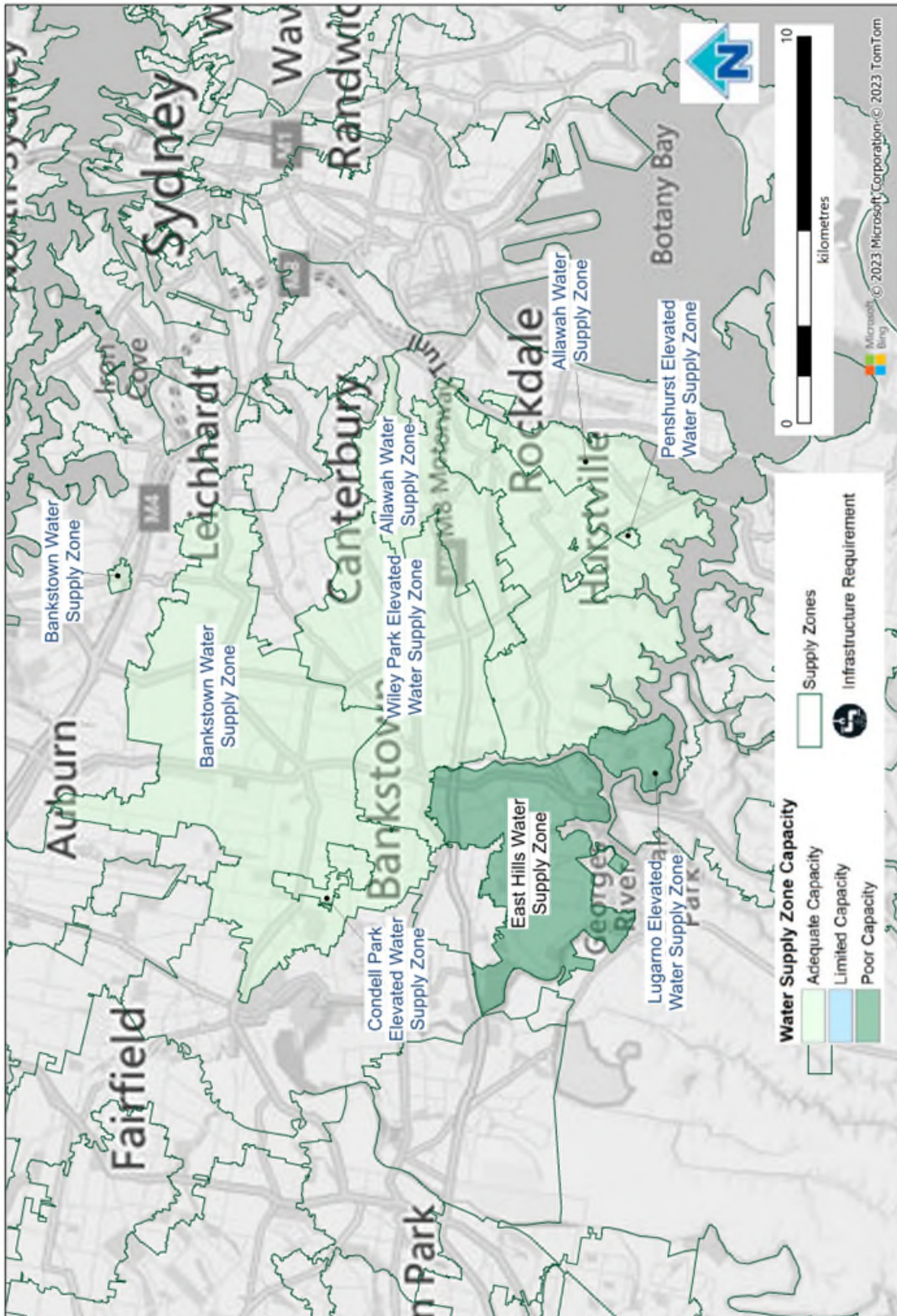
Name of water delivery system	Potts Hill Water Delivery System
Name of distribution system/s	Bankstown Water Distribution System Southern Water Distribution System East Hills Water Distribution System Eastern Water Distribution Potts Hill Distribution Sutherland Distribution System
Map of Network	https://www.sydneywater.com.au/SW/water-the-environment/how-we-manage-sydney-s-water/water-network/index.htm

System Summary	Projected			
	2026	2031	2041	2051
Demand MDD (ML/d)				
Allawah, Penshurst, Lugarno, and Rockdale	106.0	111.8	119.0	122.8
Bankstown and Condell Park	73.5	79.1	86.6	90.1
Wiley Park and East Hills (Elevated)	68.5	75.3	81.9	84.1
Centennial Park and Woollahra	99.6	105.9	111.8	116.2
Crown Street and Pyrmont Gravity	79.4	87.7	96.5	100.1
Dover Height, Vaucluse and Vaucluse Elevated	17.8	18.1	18.5	18.9
Maroubra and Randwick	38.4	40.3	41.7	43.0
Waverly, Waverly Elevated and Bellevue Hill	49.7	50.7	52.6	54.3
Ashfield and Petersham (Elevated)	71.9	75.1	79.2	81.6
Botany Gravity	61.8	65.5	68.0	69.8
Canterbury and Marrickville	51.4	58.1	64.5	65.7
Sutherland	65.1	67.5	71.7	74.7

Infrastructure requirement and Capacity Constraints			
Planning Horizon	Infrastructure and Location	Purpose	Approximate Capital Cost (\$m)
2026	Water Network System	Growth	\$9.2M
2026	Water Network Watermain	Growth	\$0.05M
2028	Water Network System	Growth	\$10.2M
2031	Water Network System	Growth	\$12.6M
2041	Water Network System	Growth	\$31M
2051	Water Network System	Growth	\$16.9M

Information sources, where publicly available
N/A (not publicly available)

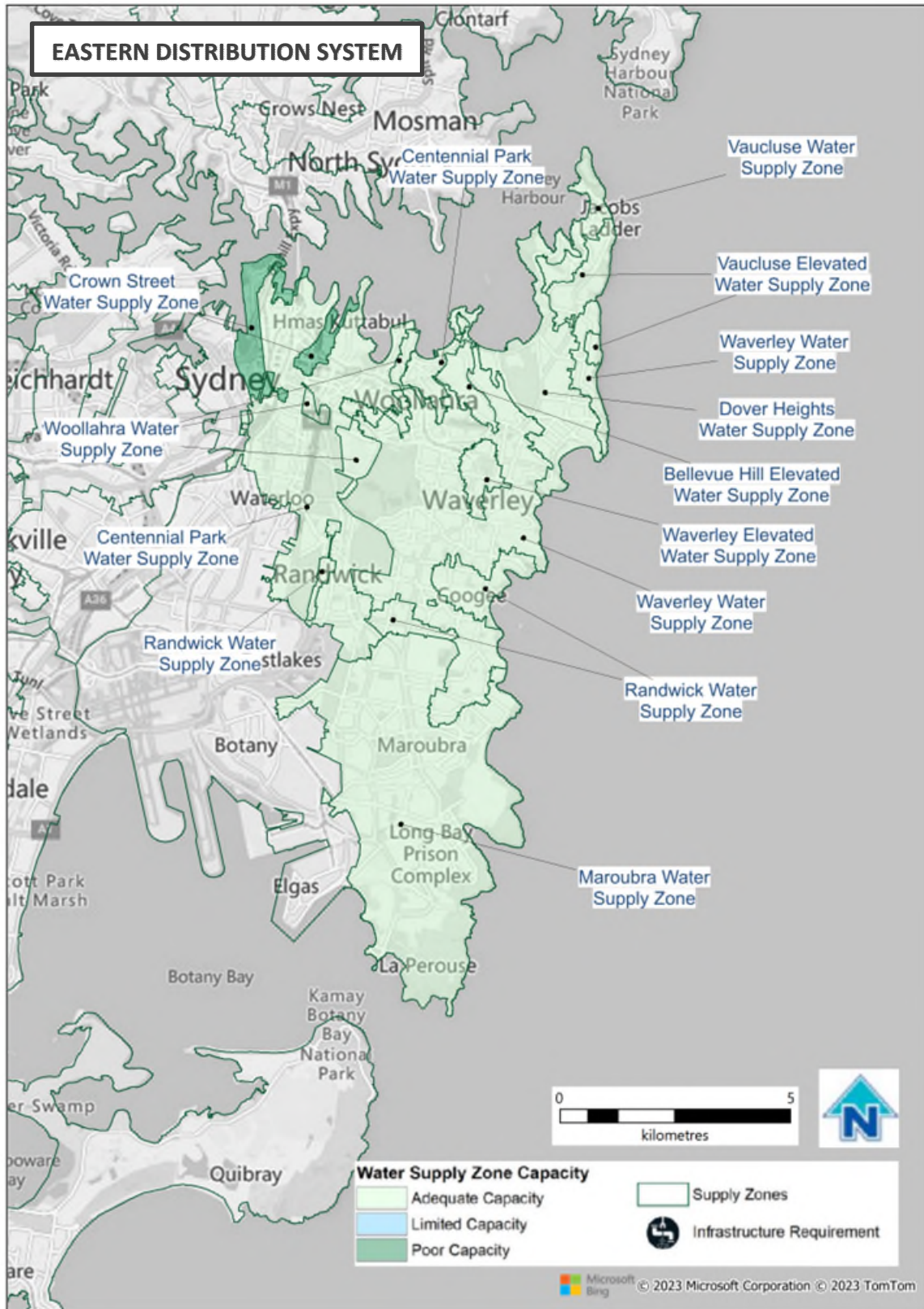
Further investigations
Refer to Growth Servicing Plan 2022-2027: https://www.sydneywater.com.au/plumbing-building-developing/developing/growth-servicing-plan.html



© June 2023 Sydney Water

While Sydney Water has made every effort to provide information that is up to date, this information can be affected by many factors and is provided as a guide only. Sydney Water makes no representation, warranty, undertaking or guarantee (express or implied) that the information provided in this document is accurate, reliable or complete.

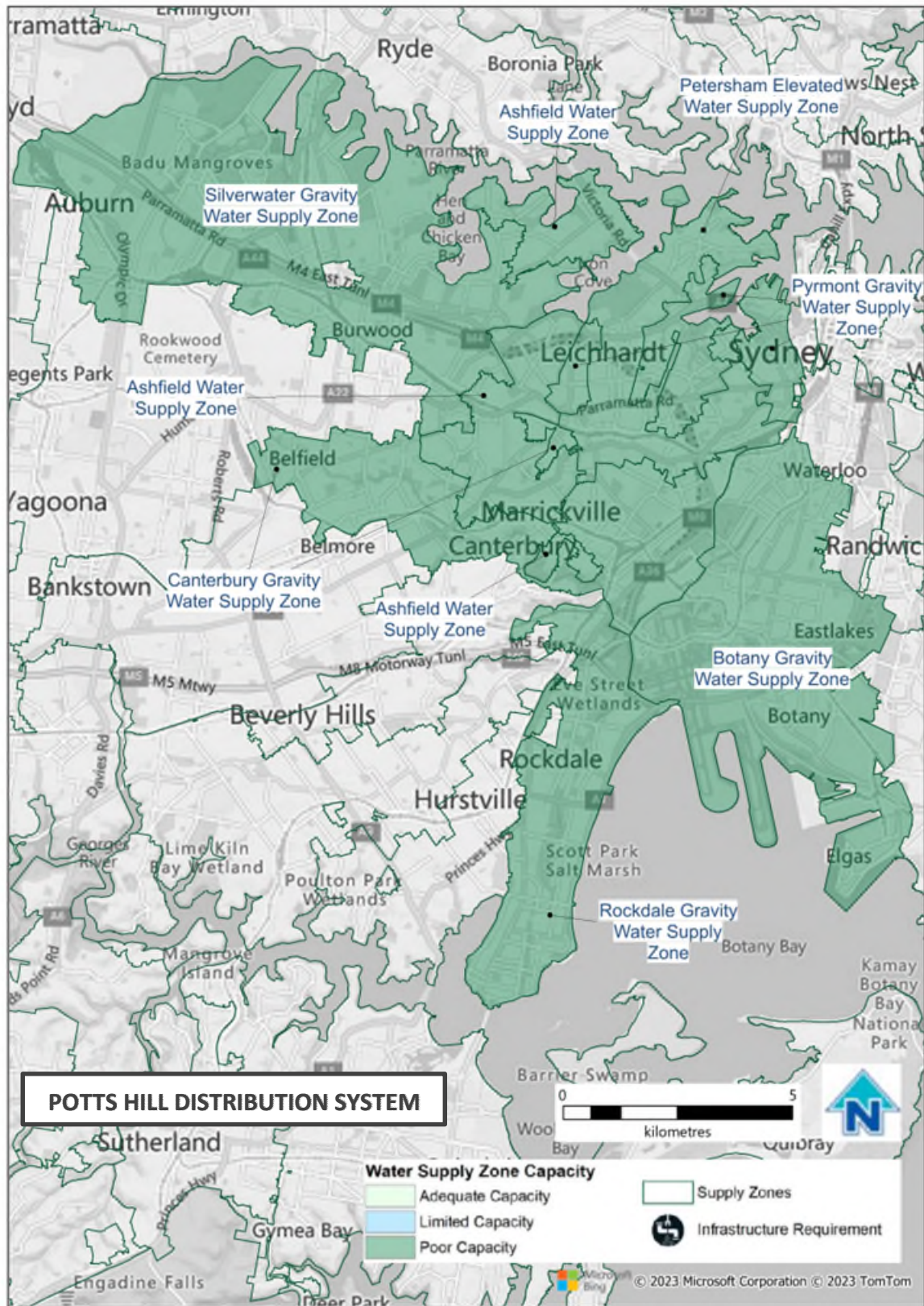
Date published: 30 June 2023



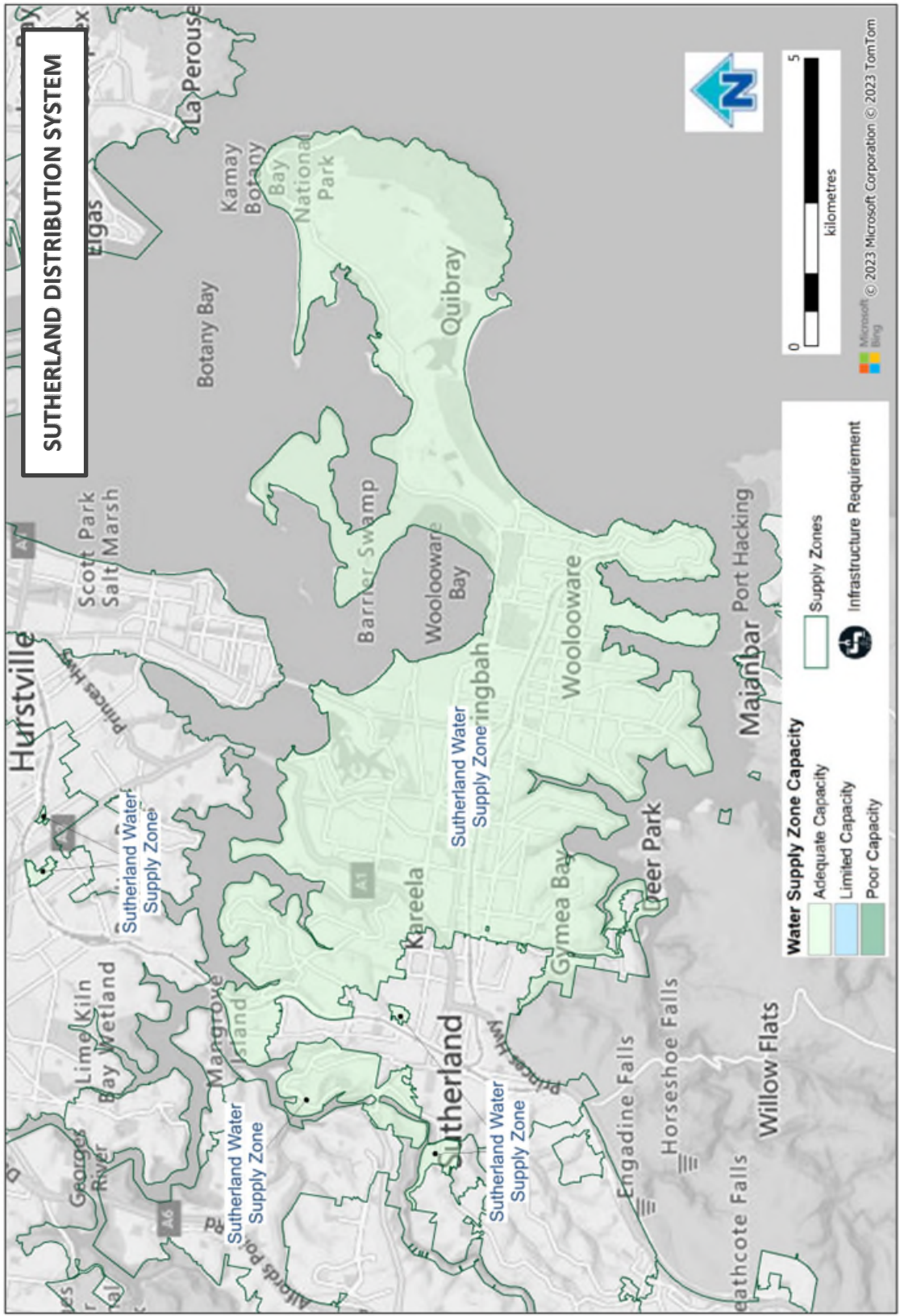
© June 2023 Sydney Water

While Sydney Water has made every effort to provide information that is up to date, this information can be affected by many factors and is provided as a guide only. Sydney Water makes no representation, warranty, undertaking or guarantee (express or implied) that the information provided in this document is accurate, reliable or complete.

Date published: 30 June 2023



© June 2023 Sydney Water
 While Sydney Water has made every effort to provide information that is up to date, this information can be affected by many factors and is provided as a guide only. Sydney Water makes no representation, warranty, undertaking or guarantee (express or implied) that the information provided in this document is accurate, reliable or complete.



© June 2023 Sydney Water
While Sydney Water has made every effort to provide information that is up to date, this information can be affected by many factors and is provided as a guide only. Sydney Water makes no representation, warranty, undertaking or guarantee (express or implied) that the information provided in this document is accurate, reliable or complete.